

MAIDENHEAD METEOROLOGICAL OBSERVATIONS FOR AUGUST 2011

DD	N	dd	ff	ww	VV	0900GMT		Temperature				Soil temperatures (depth in cm)						E	SS	Rain	Sun	S	L	H	T	G	F	Press	Rain hrs	Fr. hrs	Pch Evap		
						Temp	RH	Max	Min	Gmin	5	10	20	30	50	100																	
01	7	09	02	02	97	21.4	60	29.2	16.1	13.5	17.8	18.0	18.3	17.9	17.2	15.9	00	0	0.0	10.3	0	0	0	0	0	0	0	1013.0	0.0	0.0	4.0	Number of	
02	3	25	02	02	97	24.4	67	28.4	16.3	13.8	18.5	18.8	18.9	18.4	17.4	15.9	90	0	0.0	7.8	0	0	0	0	0	0	1014.0	0.0	0.0	2.8	days with		
03	6	33	02	05	96	22.2	88	28.6	15.8	14.6	19.1	19.4	19.9	19.3	17.7	16.1	90	0	7.2	8.6	0	0	0	0	0	0	1014.0	5.4	0.0	3.6	2011 normal		
04	8	16	05	50	97	18.1	95	20.4	16.4	15.0	19.0	19.4	20.0	19.4	18.8	16.3	10	0	6.7	0.6	0	0	0	0	0	0	1010.0	4.5	0.0	1.0	Snow/sleet falling		
05	1	24	02	02	97	19.5	78	25.5	13.1	11.6	16.6	17.0	18.0	18.5	18.1	16.5	10	0	0.0	8.4	0	0	0	0	0	0	1012.5	0.0	0.0	2.1	0 0.0		
06	7	18	05	02	97	17.7	76	20.7	13.5	11.8	16.7	17.2	17.2	18.5	17.8	16.5	10	0	0.0	1.8	0	0	0	0	0	0	1002.5	0.0	0.0	1.7	50% snow cover 09GMT		
07	7	23	09	21	97	16.7	74	20.7	11.6	10.0	16.6	16.4	15.8	17.8	17.5	16.4	10	0	5.6	5.9	0	0	0	0	0	0	1003.0	2.3	0.0	0.9	0 0.0		
08	6	28	05	02	97	17.7	78	21.7	10.6	9.5	16.6	16.5	15.6	17.2	17.1	16.4	10	0	0.5	6.3	0	0	0	0	0	0	1005.0	0.6	0.0	2.9	Hail or ice pellets		
09	3	29	05	02	97	16.3	60	21.3	10.6	9.5	16.7	15.8	14.8	14.8	17.0	16.1	10	0	0.0	9.9	0	0	0	0	0	0	1024.5	0.0	0.0	2.0	0 0.1		
10	6	27	02	02	97	18.4	60	23.4	9.2	8.0	17.1	16.5	15.4	15.4	17.0	16.1	10	0	1.5	7.2	0	0	0	0	0	0	1011.5	1.5	0.0	2.6	Thunder		
11	8	23	09	02	97	17.3	94	21.7	14.2	12.2	16.3	17.1	17.0	17.0	17.1	16.3	10	0	5.7	2.7	0	0	0	0	0	0	1011.5	1.4	0.0	1.3	0 2.0		
12	7	24	02	02	97	19.6	84	23.6	15.3	13.0	17.0	17.7	17.1	17.1	17.1	16.2	10	0	3.3	1.2	0	0	0	0	0	0	1005.5	2.2	0.0	1.2	Gale		
13	8	22	02	21	97	19.8	89	21.3	16.2	15.0	17.7	17.8	17.6	17.6	17.4	16.1	10	0	tr	2.2	0	0	0	0	0	0	1006.5	0.0	0.0	1.1	0 0.0		
14	7	21	05	02	97	20.1	76	23.1	14.1	14.0	17.3	17.2	17.5	17.5	17.6	16.1	10	0	0.0	5.5	0	0	0	0	0	0	1016.0	0.0	0.0	2.1	Fog at 09GMT		
15	1	25	02	02	97	21.3	55	22.9	9.0	7.2	14.3	15.0	16.8	16.8	17.5	16.1	10	0	0.3	8.1	0	0	0	0	0	0	1016.0	0.8	0.0	2.2	0 0.3		
16	8	20	05	02	97	17.3	82	21.7	11.0	11.0	16.1	16.6	17.2	17.2	17.0	16.1	10	0	tr	3.2	0	0	0	0	0	0	1018.0	0.0	0.0	1.7	Air frost		
17	7	21	02	02	97	18.0	67	19.2	12.2	10.2	15.5	16.0	16.8	17.2	17.0	16.1	10	0	1.7	0.1	0	0	0	0	0	0	1016.0	2.4	0.0	1.6	0 0.0		
18	8	04	02	21	97	13.2	94	13.4	12.2	9.9	14.5	15.1	16.5	16.9	16.7	16.1	10	0	42.0	0.0	0	0	0	0	0	0	1019.5	9.6	0.0	0.2	Ground frost		
19	9	00	00	45	04	13.2	97	21.5	8.5	6.5	12.7	12.9	14.5	15.7	16.3	16.1	10	0	0.0	10.2	0	0	0	0	0	0	1019.5	0.0	0.0	1.8	0 0.0		
20	7	23	05	02	97	18.7	90	21.1	13.2	8.9	15.2	15.3	16.0	16.4	16.2	16.0	10	0	3.7	6.3	0	0	0	0	0	0	1013.5	2.2	0.0	0.9	0.2mm precipitation		
21	7	27	02	02	97	19.2	76	23.0	12.7	10.7	16.0	15.9	15.9	16.4	16.2	15.9	10	0	0.3	5.8	0	0	0	0	0	0	1019.5	0.3	0.0	1.6	17 10.1		
22	5	35	02	02	97	19.4	78	23.4	9.5	7.1	13.4	14.2	15.6	16.5	16.2	15.9	10	0	0.5	10.6	0	0	0	0	0	0	1013.0	0.9	0.0	2.9	1.0mm precipitation		
23	8	02	05	21	96	15.5	88	16.2	14.8	12.9	15.6	15.7	16.6	16.8	16.4	15.8	10	0	0.1	0.0	0	0	0	0	0	0	1013.5	0.1	0.0	0.4	11 7.1		
24	8	21	02	10	95	16.2	81	22.2	14.2	11.7	15.6	15.6	16.1	16.2	16.3	15.8	10	0	0.7	5.5	0	0	0	0	0	0	1010.5	0.4	0.0	2.0	5.0mm precipitation		
25	7	20	05	02	97	14.8	93	22.2	13.8	11.1	14.4	15.0	16.7	16.5	16.2	15.8	10	0	18.9	5.0	0	0	0	0	0	0	1010.5	11.4	0.0	0.9	6 3.2		
26	8	06	02	60	95	14.0	98	18.1	13.7	13.1	15.0	15.5	16.2	16.3	16.2	15.7	10	0	0.7	1.0	0	0	0	0	0	0	1003.5	1.0	0.0	0.9	No sunshine		
27	5	27	02	02	97	17.5	76	18.7	10.8	9.0	13.9	14.2	15.5	15.9	15.8	15.7	10	0	1.0	7.3	0	0	0	0	0	0	1013.0	0.6	0.0	1.4	3 1.6		
28	7	23	09	02	97	17.4	68	19.8	12.3	10.2	15.0	14.6	15.5	15.9	15.9	15.6	10	0	0.1	5.0	0	0	0	0	0	0	1016.0	0.1	0.0	1.8	After three hot days at the start		
29	4	25	09	02	97	17.2	55	18.8	9.4	7.5	13.4	13.7	15.0	15.9	15.9	15.6	10	0	0.0	5.2	0	0	0	0	0	0	1018.5	0.0	0.0	1.8	of the month, the remainder of		
30	8	29	02	02	97	14.5	70	17.8	12.4	10.5	13.8	14.5	15.5	16.0	16.0	15.5	10	0	0.0	0.0	0	0	0	0	0	0	1018.5	0.0	0.0	1.3	the month was cooler than		
31	7	02	02	02	97	15.2	77	18.4	12.7	10.5	14.5	15.0	15.6	16.0	16.0	15.4	10	0	0.0	0.8	0	0	0	0	0	0	1016.5	0.0	0.0	1.4	average. The 18th was a very		
Monthly means						17.8	78	21.5	12.8	11.0	15.9	16.1	16.6	16.9	16.9	16.0												1013.1				cool day. It was a wet and dull	
Monthly totals																			100.5	152.5								47.7	0.0	54.1	month, not helped by the		
Highest values						24.4		29.2	16.4	15.0	19.1	19.4	20.0	19.4	18.8	16.5			42.0	10.6								11.4	0.0	4.0	with 18.9mm recorded on the		
Lowest values						13.2	55	13.4	8.5	6.5	12.7	12.9	14.5	14.8	15.8	15.4																	25th - these two totals
1971-2000 monthly climatological averages																																accounted for 60% of the total	
						76	22.4	12.6	10.5	16.0	16.7	17.7	17.8	17.3	16.4			54.2	188.5									1016.8	32.1	0.0	78.7	rainfall.	

Key

DD: date

07GMT observations

N	cloud cover (oktas, 9=obscured)	dd	wind direction (degrees/10)
ff	wind speed (knots)		
ww	present weather code		
1	cloud decreasing	21	recent rain
2	sky not changing	25	recent rain shower
3	cloud increasing	50	intermittent slight drizzle
5	haze	61	continuous light rain
10	mist	63	continuous moderate rain
VV	visibility (00-50 metres/100, 94 very poor, 95 poor, 96 moderate, 97 good)		

Soil temperatures are for 0700GMT beneath bare soil (5, 10, 20cm) or grass (30, 50, 100cm)

09GMT observations

Temp	temperature (degC)	RH	relative humidity (%)
E	state of ground (00 dry, 10 moist, 20 wet, 90 cracked)	SS	snow depth (cm)
Press	air pressure (mb)		

24 hour readings

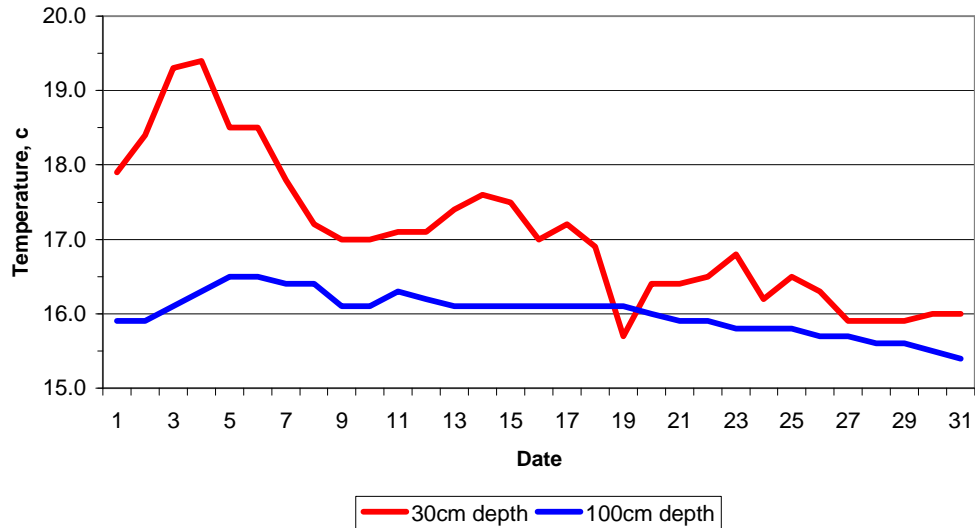
Max	maximum temperature (degC) beginning 09GMT	Min	minimum temperature (degC) ending 09GMT
Gmin	grass minimum temperature (degC) ending 09GMT	Rain	precipitation beginning 09GMT
Sun	sunshine (hours) sunrise-sunset	Rain hrs	hours of rainfall (>0.1mm/h) 09-09GMT
Fr. Hrs	hours of air frost (00-24GMT)	Pch Evap	Piche evaporation (ml) beginning 09GMT

Days with

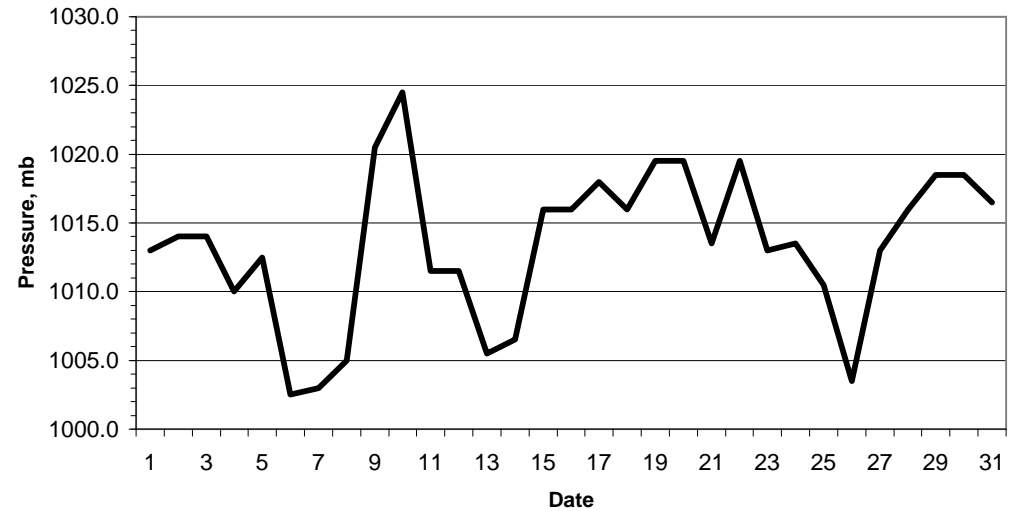
S	snow(5) or sleet(1) falling	L	50% snow cover at 09GMT	H	hail or ice pellets
T	thunder heard	G	gale	F	fog at 09GMT

This information (and data for earlier months) is also available at <http://www.met.rdg.a.uk/~brugge>

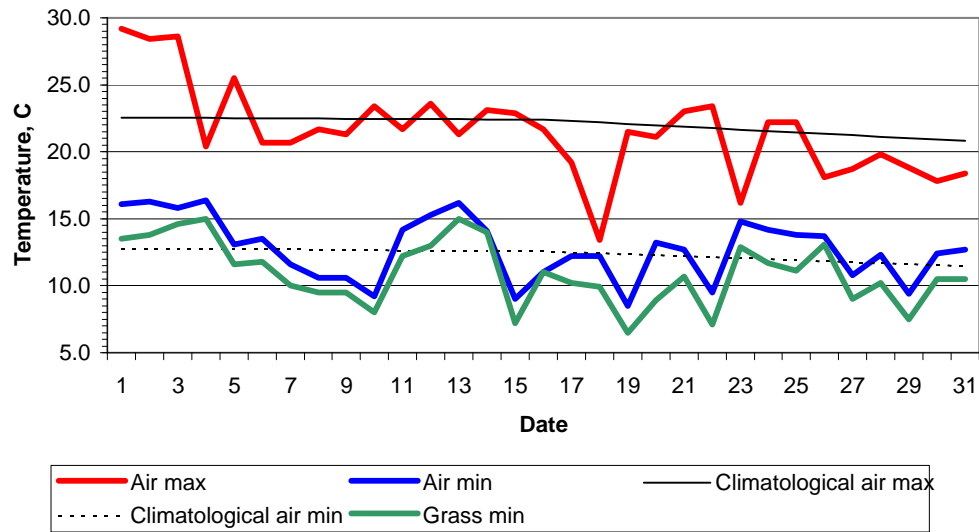
Daily soil temperatures, 0700GMT



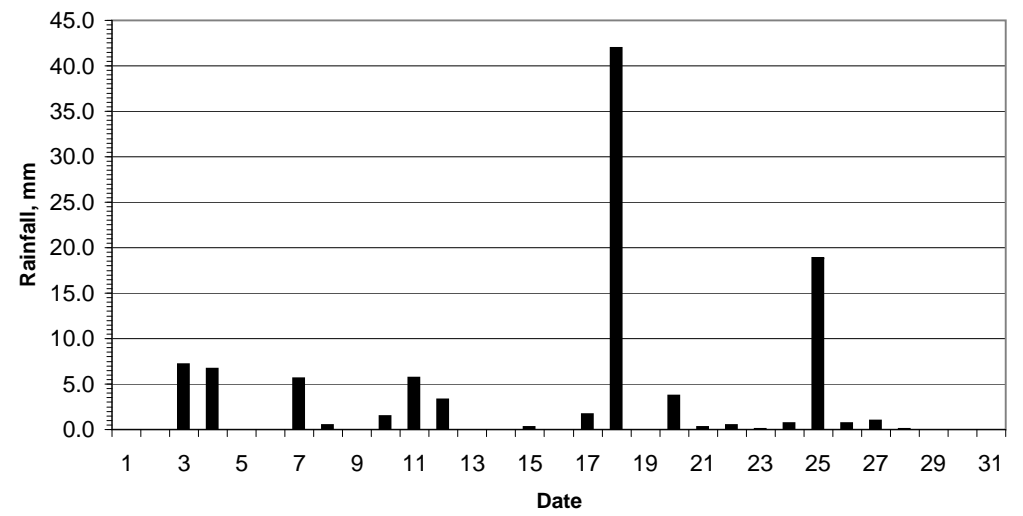
Mean sea level pressure, 0900GMT



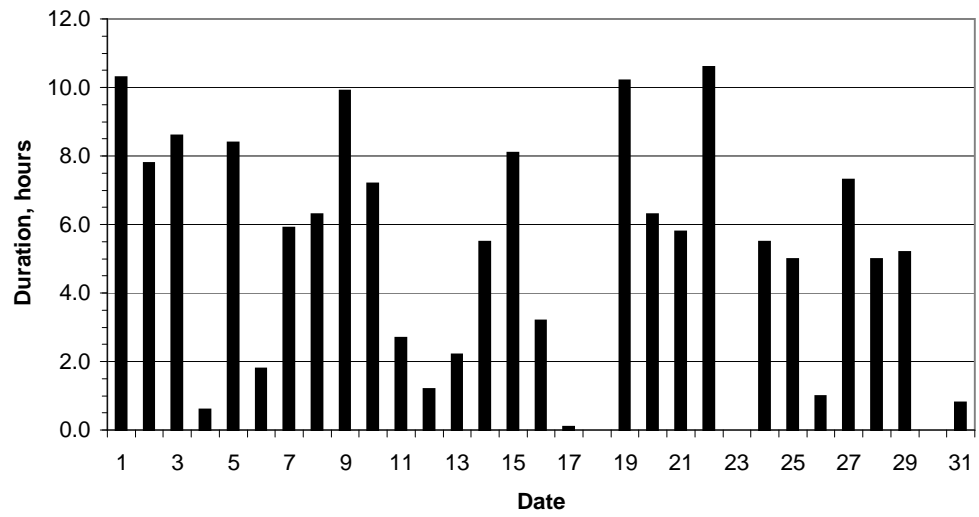
Daily temperature extremes



Daily rainfall



Daily sunshine



Daily evaporation

