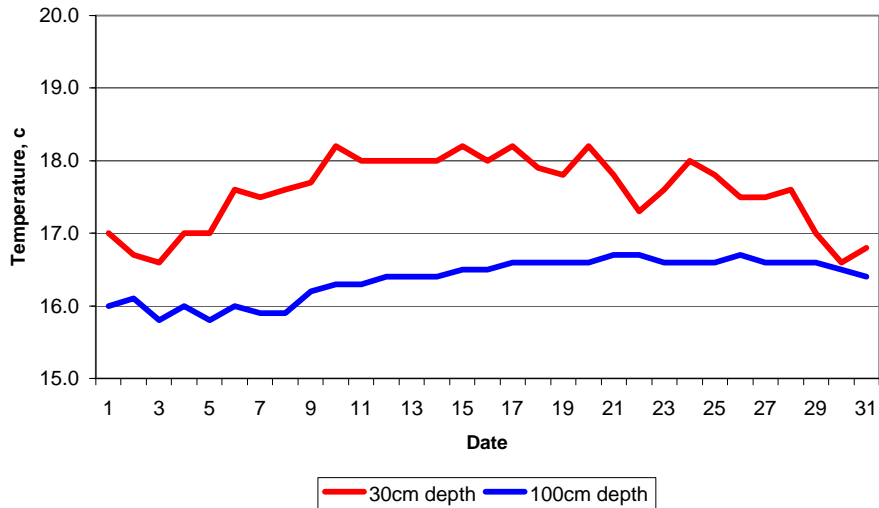


MAIDENHEAD METEOROLOGICAL OBSERVATIONS FOR AUGUST 2009

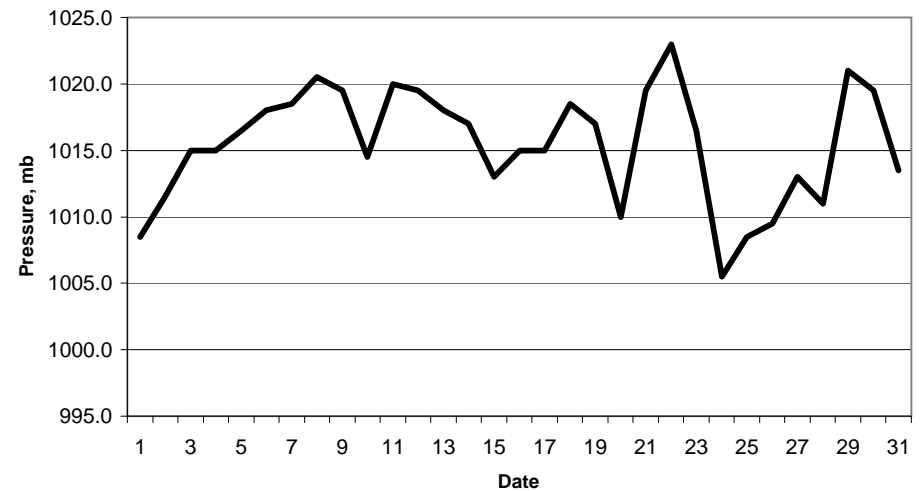
DD	N	dd	ff	ww	VV	0900GMT		Temperature			Soil temperatures (depth in cm)						E	SS	Rain	Sun	S	L	H	T	G	F	Press	Rain	Fr.	Pch			
						Temp	RH	Max	Min	Gmin	5	10	20	30	50	100												hrs	hrs	Evap			
01	8	21	02	03	97	17.3	80	19.5	14.8	14.2	16.2	16.4	17.0	17.0	16.7	16.0	10	0	2.4	0.1	0	0	0	0	0	0	1008.5	0.8	0.0	0.6	Number of		
02	1	22	05	02	97	18.1	63	22.0	9.7	10.6	15.6	15.8	16.8	16.7	16.1	10	0	0.1	8.0	0	0	0	0	0	0	1011.5	0.1	0.0	2.5	days with			
03	3	18	05	02	97	19.0	60	21.8	11.0	11.0	16.3	16.5	16.7	16.6	16.7	15.8	00	0	0.5	6.7	0	0	0	0	0	1015.0	1.0	0.0	2.2	2009 normal			
04	8	18	05	50	97	18.0	89	23.5	16.2	16.0	17.6	17.7	16.9	17.0	16.8	16.0	10	0	0.0	0.0	0	0	0	0	0	1015.0	0.0	0.0	1.0	Snow/sleet falling			
05	7	22	05	02	97	23.0	59	26.1	17.3	16.5	18.2	18.4	17.0	17.0	16.8	15.8	10	0	12.7	1.5	0	0	0	0	0	1016.5	1.5	0.0	1.5	0 0.0			
06	1	32	02	02	97	17.5	88	22.9	16.1	14.5	17.8	18.0	17.2	17.6	16.9	16.0	10	0	12.9	2.5	0	0	0	0	0	1018.0	7.5	0.0	0.8	50% snow cover 09GMT			
07	8	32	02	02	97	15.5	90	22.2	15.3	15.5	16.8	16.9	17.4	17.5	17.0	15.9	10	0	0.0	6.0	0	0	0	0	0	1018.5	0.0	0.0	1.8	0 0.0			
08	5	32	02	02	97	19.3	65	23.5	11.1	13.0	15.6	15.8	17.5	17.6	17.1	15.9	10	0	0.0	9.5	0	0	0	0	0	1020.5	0.0	0.0	1.9	Hail or ice pellets			
09	7	17	02	03	97	19.5	71	25.5	13.7	13.9	17.1	17.1	17.6	17.6	17.7	16.2	10	0	0.0	9.6	0	0	0	0	0	1014.5	0.0	0.0	2.7	0 0.1			
10	3	18	02	02	97	19.7	64	20.6	13.8	14.2	16.8	17.2	18.0	18.0	18.2	16.3	10	0	0.0	2.4	0	0	0	0	0	1020.0	0.0	0.0	1.5	Thunder			
11	8	00	00	02	97	18.1	86	24.3	14.5	14.7	17.5	17.4	17.9	17.9	18.0	16.3	10	0	0.0	8.0	0	0	0	0	0	1019.5	0.0	0.0	1.6	1 2.0			
12	8	22	05	02	97	19.4	86	22.4	14.9	15.0	17.3	17.5	18.0	18.0	18.0	16.4	10	0	4.5	0.2	0	0	0	0	0	1018.0	1.9	0.0	0.9	Gale			
13	5	33	02	01	97	18.4	91	23.8	15.9	16.4	17.7	17.9	17.8	17.8	18.0	16.4	10	0	0.0	9.8	0	0	0	0	0	1017.0	0.0	0.0	1.6	0 0.0			
14	7	15	02	10	96	19.8	75	23.2	13.0	13.9	17.0	17.1	17.8	17.8	18.0	16.4	10	0	0.1	4.0	0	0	0	0	0	1013.0	0.1	0.0	2.6	Fog at 09GMT			
15	8	18	02	50	96	17.5	92	22.7	16.4	16.4	17.8	18.0	18.4	18.4	18.2	16.5	10	0	0.0	6.0	0	0	0	0	0	1015.0	0.0	0.0	1.4	0 0.3			
16	8	23	02	02	97	20.0	67	24.6	14.2	14.5	17.3	17.5	18.0	18.0	18.0	16.5	10	0	0.0	9.6	0	0	0	0	0	1015.0	0.0	0.0	2.6	Air frost			
17	7	16	02	02	97	19.6	70	22.8	12.4	13.6	16.2	16.7	17.8	18.2	17.7	16.6	10	0	0.0	8.8	0	0	0	0	0	1018.5	0.0	0.0	1.2	0 0.0			
18	5	18	02	03	97	19.7	65	23.6	12.3	13.0	15.6	16.3	16.9	17.9	17.6	16.6	10	0	0.0	8.8	0	0	0	0	0	1017.0	0.0	0.0	1.3	Ground frost			
19	7	18	02	02	97	21.5	63	28.5	12.0	13.1	15.9	16.3	17.4	17.8	17.4	16.6	10	0	0.0	10.9	0	0	0	0	0	1010.0	0.0	0.0	4.6	0 0.0			
20	6	15	02	02	97	20.7	81	22.7	14.6	14.0	17.2	17.3	18.0	18.2	17.6	16.6	00	0	0.0	5.4	0	0	0	0	0	1019.5	0.0	0.0	2.4	0.2mm precipitation			
21	5	23	02	02	97	17.7	65	20.9	11.6	9.5	15.4	16.1	17.2	17.8	17.6	16.7	00	0	0.5	8.7	0	0	0	0	0	1023.0	0.4	0.0	1.9	10 10.1			
22	8	22	02	02	97	19.6	68	23.0	8.8	7.5	14.6	15.0	16.4	17.3	17.5	16.7	00	0	0.0	8.4	0	0	0	0	0	1016.5	0.0	0.0	2.2	1.0mm precipitation			
23	7	00	00	03	97	22.5	58	27.0	13.3	11.1	16.3	16.3	17.0	17.6	17.6	16.6	00	0	0.0	11.2	0	0	0	0	0	#REF!	0.0	0.0	2.4	6 7.1			
24	7	24	02	02	97	19.4	71	23.9	14.0	12.0	16.9	17.2	17.9	18.0	17.7	16.6	00	0	0.3	3.7	0	0	0	0	0	1005.5	0.1	0.0	1.6	5.0mm precipitation			
25	5	18	02	03	97	16.9	74	21.2	9.6	7.8	15.3	15.6	17.1	17.8	17.8	16.6	00	0	0.3	5.6	0	0	0	0	0	1008.5	1.2	0.0	2.0	2 3.2			
26	8	17	02	60	96	18.8	74	21.8	12.8	10.5	16.0	16.5	17.0	17.5	17.6	16.7	00	0	1.6	0.6	0	0	0	0	0	1009.5	3.5	0.0	1.3	No sunshine			
27	7	23	02	02	96	18.1	79	23.1	16.2	14.5	17.2	17.2	17.4	17.5	17.2	16.6	10	0	0.0	8.5	0	0	0	0	0	1013.0	0.0	0.0	2.5	1 1.6			
28	6	18	09	02	97	17.0	66	20.5	11.7	9.6	15.2	15.9	17.0	17.6	17.3	16.6	10	0	1.0	7.5	0	0	0	1	0	1011.0	0.4	0.0	2.1	A mostly dry month after the			
29	0	31	05	02	97	17.7	66	20.1	8.3	6.1	13.3	14.1	15.8	17.0	17.1	16.6	10	0	0.0	9.8	0	0	0	0	0	1021.0	0.0	0.0	2.2	first six days - with a couple of			
30	7	20	02	02	97	16.0	78	18.6	9.0	7.0	14.4	14.7	15.7	16.6	16.9	16.5	00	0	0.1	0.2	0	0	0	0	0	1019.5	0.2	0.0	1.0	hot afternoons but no			
31	8	18	02	02	96	18.4	90	25.4	17.0	13.8	16.8	16.7	17.0	16.8	16.8	16.4	09	0	0.0	4.8	0	0	0	0	0	1013.5	0.0	0.0	2.3	prolonged hot weather.			
Monthly means						18.8	74	23.0	13.3	12.7	16.4	16.7	17.3	17.6	17.4	16.4										#REF!					Temperatures slightly above		
Monthly totals																					37.0	186.8						18.7	0.0	58.2	average and the sunshine		
Highest values																															total almost exactly as		
Lowest values						23.0		28.5	17.3	16.5	18.2	18.4	18.4	18.4	18.2	16.7			12.9	11.2								7.5	0.0	4.6	expected.		
1971-2000 monthly climatological averages						15.5	58	18.6	8.3	6.1	13.3	14.1	15.7	16.6	16.7	15.8																	
						76	22.4	12.6	10.5	16.0	16.7	17.7	17.8	17.3	16.4			54.2	188.5								1016.8	32.1	0.0	78.7			

Key
 DD: date
 07GMT observations
 N cloud cover (oktas, 9=obscured) dd wind direction (degrees/10)
 ff wind speed (knots)
 ww present weather code
 1 cloud decreasing 21 recent rain
 2 sky not changing 25 recent rain shower
 3 cloud increasing 50 intermittent sligth drizzle
 5 haze 61 continuous light rain
 10 mist 63 continuous moderate rain
 VV visibility (00-50 metres/100, 94 very poor, 95 poor, 96 moderate, 97 good)
 Soil temperatures are for 0700GMT beneath bare soil (5, 10, 20cm) or grass (30, 50, 100cm)
 09GMT observations
 Temp temperature (degC) RH relative humidity (%)
 E state of ground (00 dry, 10 moist, 20 wet, 90 cracked) SS snow depth (cm)
 Press air pressure (mb)
 24 hour readings
 Max maximum temperature (degC) beginning 09GMT Min minimum temperature (degC) ending 09GMT
 Gmin grass minimum temperature (degC) ending 09GMT Rain precipitation beginning 09GMT
 Sun sunshine (hours) sunrise-sunset Rain hrs hours of rainfall (>0.1mm/h) 09-09GMT
 Fr. Hrs hours of air frost (00-24GMT) Pch Evap Piche evaporation (ml) beginning 09GMT
 Days with
 S snow(5) or sleet(1) falling L 50% snow cover at 09GMT H hail or ice pellets
 T thunder heard G gale F fog at 09GMT
 This information (and data for earlier months) is also available at <http://www.met.rdg.a.uk/~brugge>

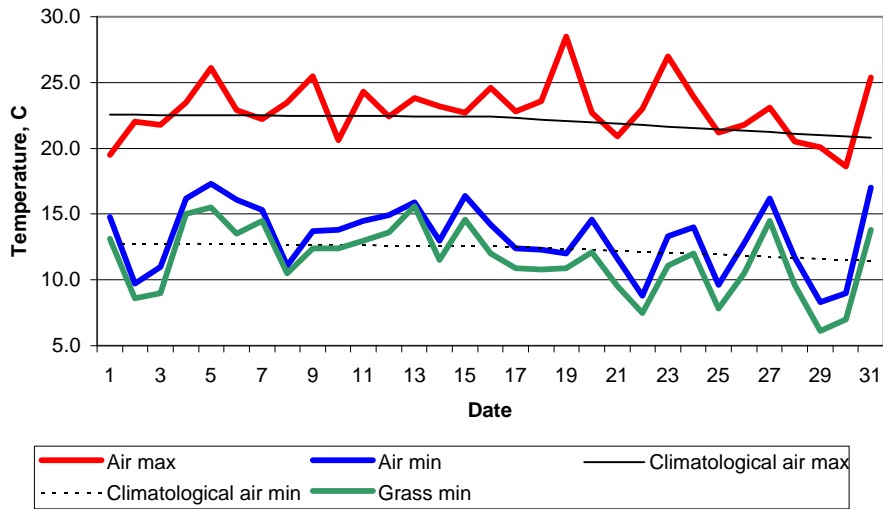
Daily soil temperatures, 0700GMT



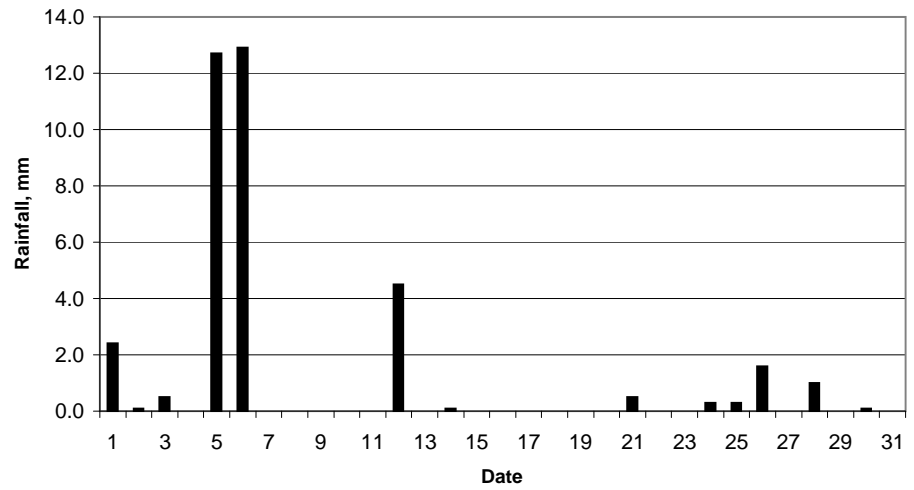
Mean sea level pressure, 0900GMT



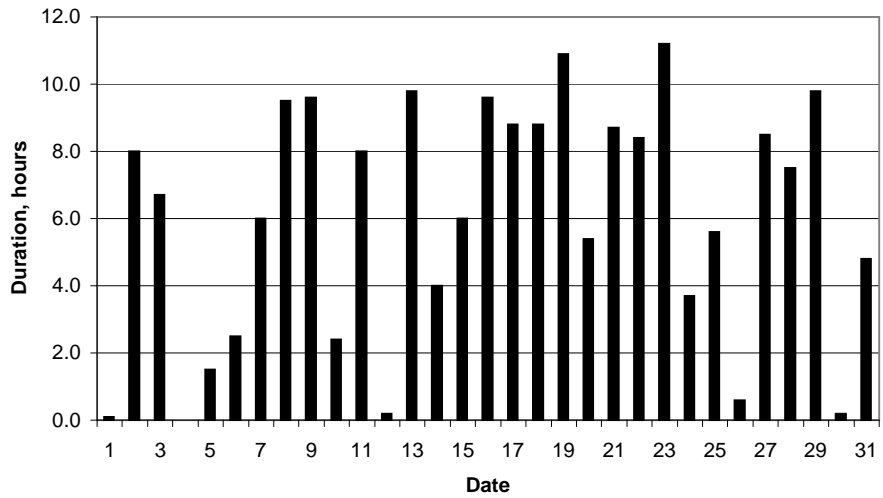
Daily temperature extremes



Daily rainfall



Daily sunshine



Daily evaporation

