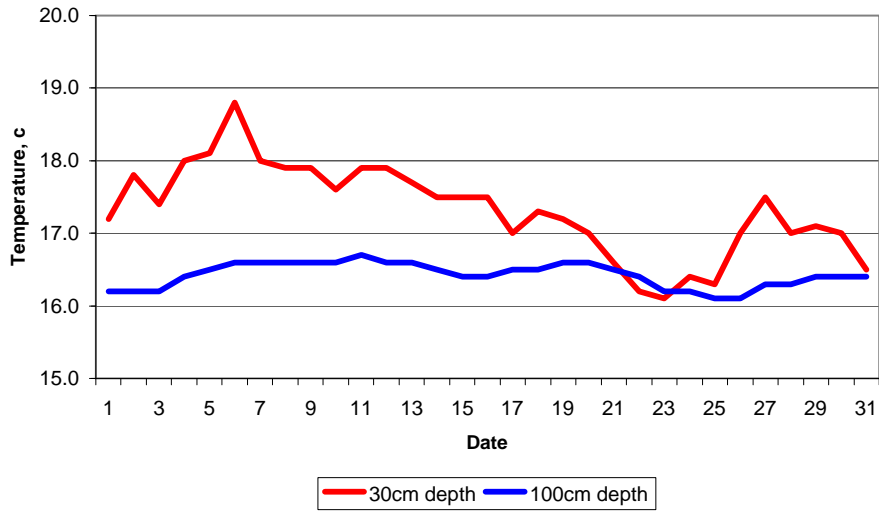


MAIDENHEAD METEOROLOGICAL OBSERVATIONS FOR AUGUST 2007

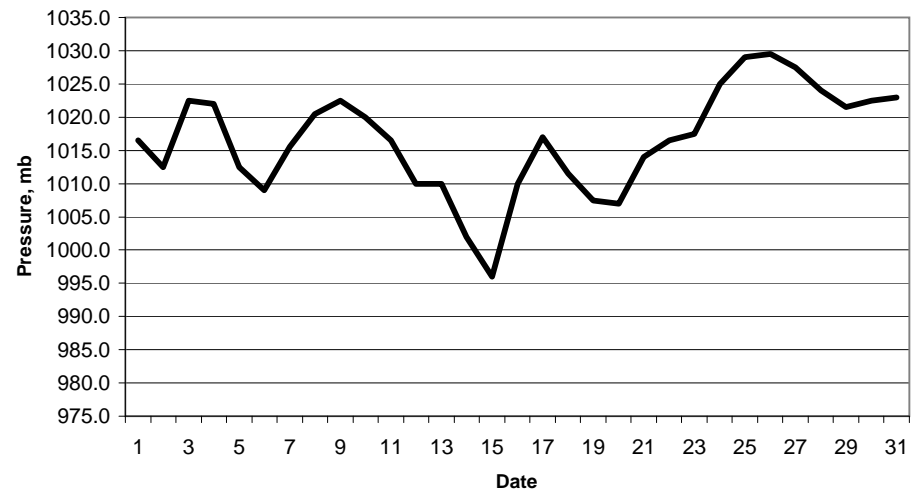
| DD  | N | dd | ff | ww | VV | 0900GMT Temperature |      |      |      | Soil temperatures (depth in cm) |      |      |      |      |      | E    | SS | Rain | Sun  | S    | L     | H    | T     | G | F | Press | Rain   | Fr.    | Pch    |      |      |   |  |
|---|---|----|----|----|----|---------------------|------|------|------|---------------------------------|------|------|------|------|------|------|----|------|------|------|-------|------|-------|---|---|-------|--------|--------|--------|------|------|---|--|
|   |   |    |    |    |    | Temp                | RH   | Max  | Min  | Gmin                            | 5    | 10   | 20   | 30   | 50   |      |    |      |      |      |       |      |       |   |   |       | 100    | hrs    | hrs    |      | Evap |   |  |
| 01  | 3 | 20 | 02 | 02 | 97 | 18.9                | 65   | 24.7 | 9.4  | 11.6                            | 14.9 | 15.5 | 17.0 | 17.2 | 16.8 | 16.2 | 10 | 0    | 0.0  | 9.3  | 0     | 0    | 0     | 0 | 0 | 0     | 0      | 1016.5 | 0.0    | 0.0  | 3.6  | Number of days with<br>2007 normal<br>Snow/sleet falling<br>0 0.0<br>50% snow cover 09GMT<br>0 0.0<br>Hail or ice pellets<br>0 0.1<br>Thunder<br>0 2.0<br>Gale<br>0 0.0<br>Fog at 09GMT<br>0 0.3<br>Air frost<br>0 0.0<br>Ground frost<br>0 0.0<br>0.2mm precipitation<br>10 10.1<br>1.0mm precipitation<br>9 7.1<br>5.0mm precipitation<br>3 3.2<br>No sunshine<br>3 1.6<br>Coldest August since 1993;<br>only two very short warm spells and no really warm nights. Sunnier than average despite a very dull spell 18th-23rd when just 3.3h of sunshine recorded. Slightly drier than average with most rain falling 12th-22nd. |  |
| 02  | 6 | 30 | 02 | 02 | 97 | 17.0                | 74   | 20.2 | 11.4 | 12.1                            | 15.9 | 16.6 | 17.6 | 17.8 | 17.1 | 16.2 | 10 | 0    | 1.0  | 1.3  | 0     | 0    | 0     | 0 | 0 | 0     | 1012.5 | 2.2    | 0.0    | 0.8  |      |   |  |
| 03  | 1 | 22 | 02 | 02 | 97 | 20.2                | 64   | 25.8 | 10.3 | 12.0                            | 14.9 | 15.6 | 17.0 | 17.4 | 16.9 | 16.2 | 10 | 0    | 0.0  | 13.7 | 0     | 0    | 0     | 0 | 0 | 0     | 1022.5 | 0.0    | 0.0    | 3.6  |      |   |  |
| 04  | 0 | 22 | 02 | 02 | 97 | 21.1                | 61   | 26.0 | 14.3 | 14.0                            | 18.0 | 18.5 | 18.5 | 18.0 | 17.2 | 16.4 | 00 | 0    | 0.0  | 14.0 | 0     | 0    | 0     | 0 | 0 | 0     | 1022.0 | 0.0    | 0.0    | 3.9  |      |   |  |
| 05  | 0 | 13 | 02 | 02 | 97 | 25.1                | 62   | 29.8 | 12.3 | 12.0                            | 17.5 | 18.0 | 18.5 | 18.1 | 17.4 | 16.5 | 00 | 0    | 0.0  | 14.0 | 0     | 0    | 0     | 0 | 0 | 0     | 1012.5 | 0.0    | 0.0    | 3.9  |      |   |  |
| 06  | 8 | 23 | 02 | 60 | 96 | 19.4                | 68   | 24.1 | 15.3 | 13.5                            | 18.5 | 18.5 | 20.0 | 18.8 | 17.8 | 16.6 | 00 | 0    | 0.0  | 8.0  | 0     | 0    | 0     | 0 | 0 | 0     | 1009.0 | 0.0    | 0.0    | 3.2  |      |   |  |
| 07  | 0 | 25 | 02 | 02 | 97 | 18.1                | 65   | 22.5 | 9.6  | 10.5                            | 17.0 | 17.0 | 18.0 | 18.0 | 17.6 | 16.6 | 00 | 0    | 0.0  | 11.0 | 0     | 0    | 0     | 0 | 0 | 0     | 1015.5 | 0.0    | 0.0    | 2.9  |      |   |  |
| 08  | 7 | 32 | 02 | 02 | 97 | 16.6                | 65   | 21.1 | 11.0 | 10.0                            | 16.0 | 16.5 | 18.0 | 17.9 | 17.6 | 16.6 | 00 | 0    | 0.0  | 12.5 | 0     | 0    | 0     | 0 | 0 | 0     | 1020.5 | 0.0    | 0.0    | 2.8  |      |   |  |
| 09  | 6 | 36 | 05 | 03 | 97 | 16.9                | 64   | 21.6 | 9.3  | 10.5                            | 16.5 | 17.0 | 17.5 | 17.5 | 17.9 | 16.6 | 00 | 0    | 0.0  | 12.5 | 0     | 0    | 0     | 0 | 0 | 0     | 1022.5 | 0.0    | 0.0    | 2.4  |      |   |  |
| 10  | 0 | 27 | 02 | 02 | 97 | 18.1                | 65   | 24.3 | 9.2  | 10.0                            | 16.5 | 16.5 | 17.5 | 17.5 | 17.6 | 16.6 | 00 | 0    | 0.0  | 13.5 | 0     | 0    | 0     | 0 | 0 | 0     | 1020.0 | 0.0    | 0.0    | 2.5  |      |   |  |
| 11  | 0 | 25 | 02 | 02 | 97 | 20.2                | 67   | 25.7 | 10.4 | 10.0                            | 17.0 | 17.5 | 18.0 | 18.0 | 17.9 | 16.7 | 00 | 0    | tr   | 12.5 | 0     | 0    | 0     | 0 | 0 | 0     | 1016.5 | 0.0    | 0.0    | 3.7  |      |   |  |
| 12  | 3 | 20 | 02 | 03 | 97 | 16.2                | 80   | 21.6 | 9.4  | 11.0                            | 17.0 | 17.5 | 18.0 | 18.0 | 17.9 | 16.6 | 10 | 0    | 2.5  | 6.5  | 0     | 0    | 0     | 0 | 0 | 0     | 1010.0 | 0.3    | 0.0    | 2.2  |      |   |  |
| 13  | 7 | 20 | 05 | 03 | 97 | 17.5                | 72   | 21.6 | 9.6  | 12.0                            | 15.5 | 16.0 | 16.5 | 16.5 | 17.7 | 16.6 | 10 | 0    | 1.2  | 5.0  | 0     | 0    | 0     | 0 | 0 | 0     | 1010.0 | 1.0    | 0.0    | 2.7  |      |   |  |
| 14  | 8 | 18 | 09 | 63 | 96 | 15.4                | 95   | 19.6 | 14.2 | 11.0                            | 15.0 | 15.5 | 16.5 | 16.5 | 17.5 | 16.5 | 10 | 0    | 9.5  | 0.1  | 0     | 0    | 0     | 0 | 0 | 0     | 1002.0 | 11.1   | 0.0    | 0.8  |      |   |  |
| 15  | 8 | 20 | 09 | 60 | 95 | 18.6                | 85   | 21.9 | 15.4 | 15.0                            | 15.5 | 16.0 | 17.0 | 17.0 | 17.5 | 16.4 | 10 | 0    | 12.2 | 3.0  | 0     | 0    | 0     | 0 | 0 | 0     | 996.0  | 6.9    | 0.0    | 1.8  |      |   |  |
| 16  | 1 | 27 | 05 | 01 | 97 | 16.2                | 68   | 20.0 | 10.9 | 11.0                            | 14.0 | 14.0 | 16.5 | 16.5 | 17.5 | 16.4 | 10 | 0    | tr   | 9.0  | 0     | 0    | 0     | 0 | 0 | 0     | 1010.0 | 0.0    | 0.0    | 2.3  |      |   |  |
| 17  | 6 | 24 | 05 | 03 | 97 | 16.4                | 77   | 20.6 | 8.8  | 10.9                            | 13.5 | 14.0 | 14.5 | 17.0 | 17.1 | 16.5 | 10 | 0    | 2.2  | 6.5  | 0     | 0    | 0     | 0 | 0 | 0     | 1017.0 | 1.0    | 0.0    | 2.5  |      |   |  |
| 18  | 8 | 18 | 05 | 21 | 97 | 18.2                | 74   | 19.6 | 13.6 | 12.5                            | 16.5 | 16.5 | 16.0 | 17.3 | 17.1 | 16.5 | 10 | 0    | 7.2  | 1.0  | 0     | 0    | 0     | 0 | 0 | 0     | 1011.5 | 7.5    | 0.0    | 2.0  |      |   |  |
| 19  | 8 | 24 | 05 | 61 | 96 | 16.3                | 89   | 17.9 | 15.2 | 15.0                            | 16.9 | 16.9 | 17.1 | 17.2 | 17.0 | 16.6 | 10 | 0    | 1.1  | 0.0  | 0     | 0    | 0     | 0 | 0 | 0     | 1007.5 | 3.0    | 0.0    | 0.2  |      |   |  |
| 20  | 8 | 27 | 02 | 02 | 96 | 13.6                | 87   | 16.7 | 12.6 | 13.5                            | 15.6 | 16.0 | 16.7 | 17.0 | 16.7 | 16.6 | 10 | 0    | 0.3  | 0.0  | 0     | 0    | 0     | 0 | 0 | 0     | 1007.0 | 0.3    | 0.0    | 0.2  |      |   |  |
| 21  | 8 | 34 | 09 | 02 | 97 | 14.0                | 91   | 16.9 | 12.9 | 11.2                            | 15.1 | 15.5 | 16.0 | 16.6 | 16.5 | 16.5 | 10 | 0    | tr   | 0.0  | 0     | 0    | 0     | 0 | 0 | 0     | 1014.0 | 0.0    | 0.0    | 2.1  |      |   |  |
| 22  | 7 | 36 | 13 | 25 | 97 | 15.8                | 85   | 18.1 | 14.0 | 13.1                            | 15.4 | 15.6 | 16.1 | 16.2 | 16.2 | 16.4 | 10 | 0    | 2.8  | 0.6  | 0     | 0    | 0     | 0 | 0 | 0     | 1016.5 | 1.4    | 0.0    | 1.1  |      |   |  |
| 23  | 8 | 36 | 05 | 02 | 97 | 14.8                | 91   | 21.9 | 14.1 | 13.5                            | 15.5 | 15.6 | 16.0 | 16.1 | 16.1 | 16.2 | 10 | 0    | tr   | 1.7  | 0     | 0    | 0     | 0 | 0 | 0     | 1017.5 | 0.0    | 0.0    | 0.6  |      |   |  |
| 24  | 8 | 01 | 05 | 02 | 97 | 16.3                | 80   | 21.0 | 14.1 | 13.9                            | 16.1 | 16.2 | 16.3 | 16.4 | 16.1 | 16.2 | 10 | 0    | 0.0  | 3.6  | 0     | 0    | 0     | 0 | 0 | 0     | 1025.0 | 0.0    | 0.0    | 0.8  |      |   |  |
| 25  | 1 | 27 | 02 | 02 | 97 | 21.1                | 80   | 27.4 | 10.9 | 9.5                             | 15.5 | 15.6 | 16.4 | 16.3 | 16.3 | 16.1 | 10 | 0    | 0.0  | 13.4 | 0     | 0    | 0     | 0 | 0 | 0     | 1029.0 | 0.0    | 0.0    | 3.0  |      |   |  |
| 26  | 1 | 23 | 02 | 02 | 97 | 19.0                | 71   | 24.3 | 13.8 | 11.9                            | 16.1 | 16.6 | 17.3 | 17.0 | 16.7 | 16.1 | 10 | 0    | 0.0  | 12.5 | 0     | 0    | 0     | 0 | 0 | 0     | 1029.5 | 0.0    | 0.0    | 2.0  |      |   |  |
| 27  | 7 | 32 | 02 | 03 | 97 | 17.8                | 68   | 20.7 | 11.0 | 8.9                             | 14.9 | 15.6 | 17.0 | 17.5 | 16.9 | 16.3 | 00 | 0    | 0.0  | 8.7  | 0     | 0    | 0     | 0 | 0 | 0     | 1027.5 | 0.0    | 0.0    | 2.0  |      |   |  |
| 28  | 7 | 27 | 02 | 02 | 97 | 17.5                | 62   | 22.1 | 11.5 | 10.9                            | 14.9 | 15.4 | 16.6 | 17.0 | 16.9 | 16.3 | 00 | 0    | tr   | 5.0  | 0     | 0    | 0     | 0 | 0 | 0     | 1024.0 | 0.0    | 0.0    | 2.2  |      |   |  |
| 29  | 7 | 26 | 02 | 02 | 97 | 18.1                | 71   | 21.2 | 12.6 | 12.0                            | 15.7 | 16.2 | 17.0 | 17.1 | 16.9 | 16.4 | 00 | 0    | tr   | 8.4  | 0     | 0    | 0     | 0 | 0 | 0     | 1021.5 | 0.0    | 0.0    | 2.2  |      |   |  |
| 30  | 8 | 27 | 02 | 02 | 97 | 17.2                | 77   | 19.8 | 9.2  | 7.2                             | 14.5 | 15.3 | 16.5 | 17.0 | 16.9 | 16.4 | 00 | 0    | 0.0  | 0.7  | 0     | 0    | 0     | 0 | 0 | 0     | 1022.5 | 0.0    | 0.0    | 1.2  |      |   |  |
| 31  | 6 | 25 | 02 | 02 | 97 | 17.5                | 73   | 21.5 | 10.8 | 8.5                             | 14.5 | 15.0 | 16.4 | 16.5 | 16.6 | 16.4 | 00 | 0    | tr   | 2.0  | 0     | 0    | 0     | 0 | 0 | 0     | 1023.0 | 0.0    | 0.0    | 1.5  |      |   |  |
| Monthly means                             |   |    |    |    |    | 17.7                | 74   | 21.9 | 11.8 | 11.6                            | 15.8 | 16.2 | 17.0 | 17.2 | 17.1 | 16.4 |    |      |      |      |       |      |       |   |   |       | 1016.5 |        |        |      |      |   |  |
| Monthly totals                            |   |    |    |    |    |                     |      |      |      |                                 |      |      |      |      |      |      |    |      |      | 40.0 | 210.0 |      |       |   |   |       |        | 34.7   | 0.0    | 66.7 |      |   |  |
| Highest values                            |   |    |    |    |    | 25.1                |      | 29.8 | 15.4 | 15.0                            | 18.5 | 18.5 | 20.0 | 18.8 | 17.9 | 16.7 |    |      | 12.2 | 14.0 |       |      |       |   |   |       |        | 11.1   | 0.0    | 3.9  |      |   |  |
| Lowest values                             |   |    |    |    |    | 13.6                | 61   | 16.7 | 8.8  | 7.2                             | 13.5 | 14.0 | 14.5 | 16.1 | 16.1 | 16.1 |    |      |      |      |       |      |       |   |   |       |        |        |        |      |      |   |  |
| 1971-2000 monthly climatological averages |   |    |    |    |    | 76                  | 22.4 | 12.6 | 10.5 | 16.0                            | 16.7 | 17.7 | 17.8 | 17.3 | 16.4 |      |    |      |      |      |       | 54.2 | 188.5 |   |   |       |        |        | 1016.8 | 32.1 | 0.0  | 78.7  |  |

Key  
 DD: date  
 07GMT observations  
 N cloud cover (oktas, 9=obscured) dd wind direction (degrees/10)  
 ff wind speed (knots)  
 ww present weather code  
 1 cloud decreasing 21 recent rain  
 2 sky not changing 25 recent rain shower  
 3 cloud increasing 50 intermittent sligh drizzle  
 5 haze 61 continuous light rain  
 10 mist 63 continuous moderate rain  
 VV visibility (00-50 metres/100, 94 very poor, 95 poor, 96 moderate, 97 good)  
 Soil temperatures are for 0700GMT beneath bare soil (5, 10, 20cm) or grass (30, 50, 100cm)  
 09GMT observations  
 Temp temperature (degC) RH relative humidity (%)  
 E state of ground (00 dry, 10 moist, 20 wet, 90 cracked) SS snow depth (cm)  
 Press air pressure (mb)  
 24 hour readings  
 Max maximum temperature (degC) beginning 09GMT Min minimum temperature (degC) ending 09GMT  
 Gmin grass minimum temperature (degC) ending 09GMT Rain precipitation beginning 09GMT  
 Sun sunshine (hours) sunrise-sunset Rain hrs hours of rainfall (>0.1mm/h) 09-09GMT  
 Fr. Hrs hours of air frost (00-24GMT) Pch Evap Piche evaporation (ml) beginning 09GMT  
 Days with  
 S snow(5) or sleet(1) falling L 50% snow cover at 09GMT H hail or ice pellets  
 T thunder heard G gale F fog at 09GMT  
 This information (and data for earlier months) is also available at <http://www.met.rdg.a.uk/~brugge>

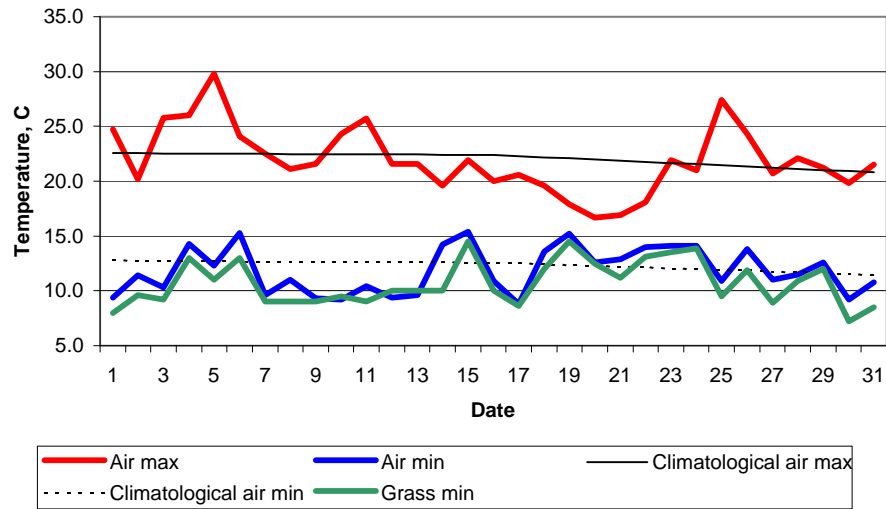
Daily soil temperatures, 0700GMT



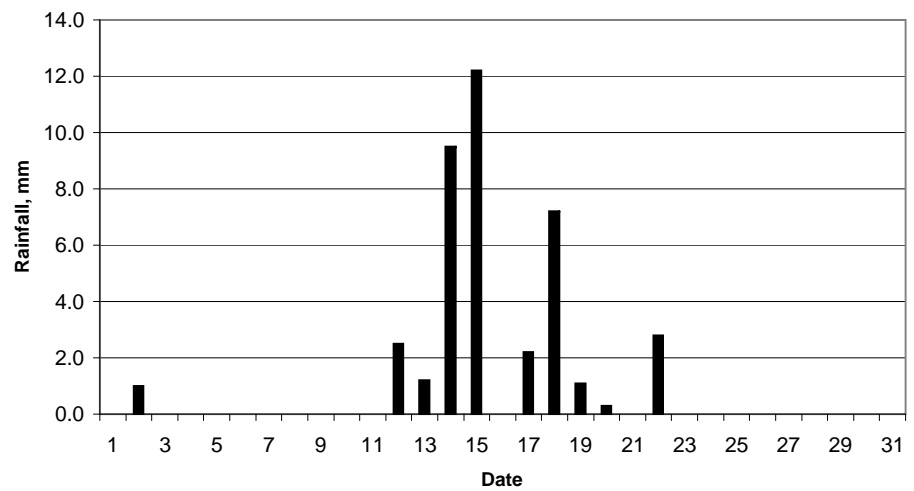
Mean sea level pressure, 0900GMT



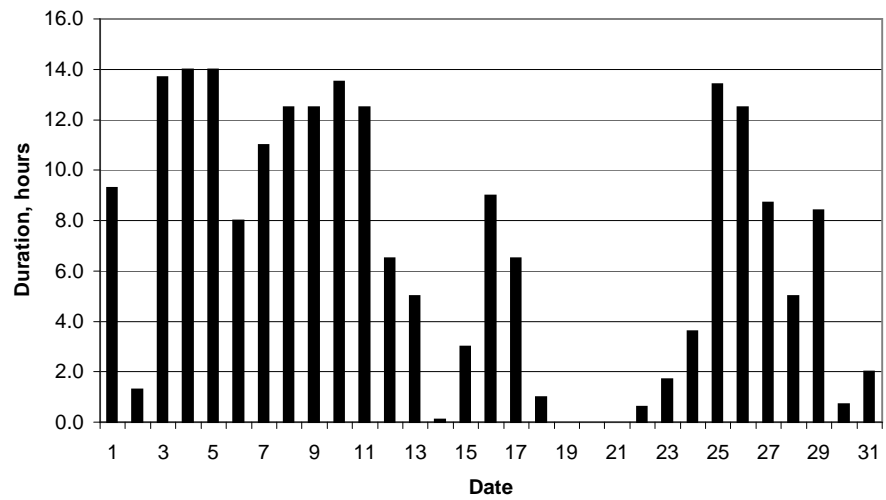
Daily temperature extremes



Daily rainfall



Daily sunshine



Daily evaporation

