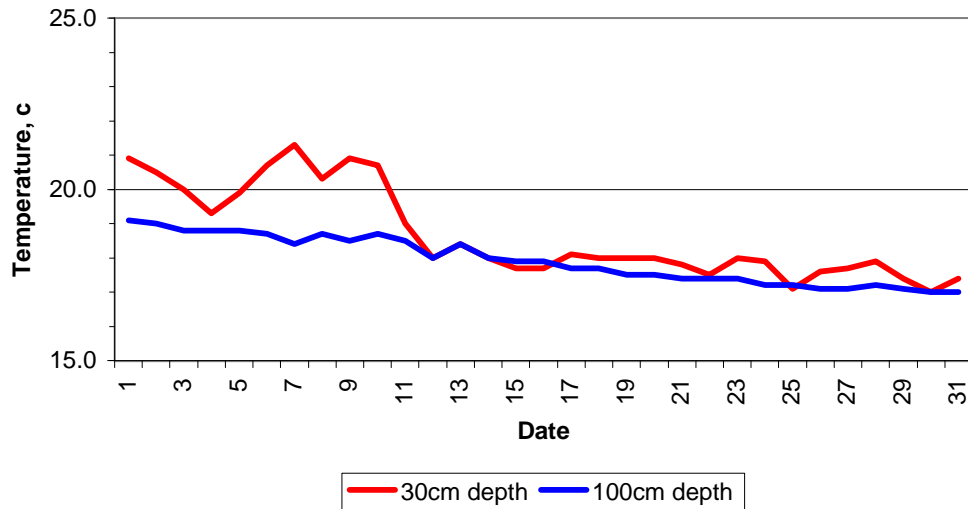


MAIDENHEAD METEOROLOGICAL OBSERVATIONS FOR AUGUST 2006

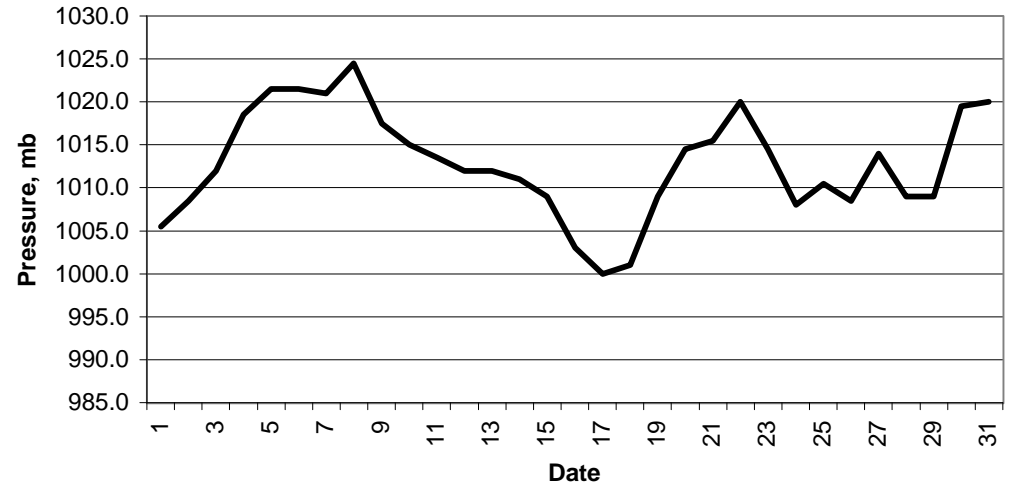
DD	N	dd	ff	ww	VV	0900GMT		Temperature			Soil temperatures (depth in cm)						E	SS	Rain	Sun	S	L	H	T	G	F	Press	Rain hrs	Fr. hrs	Pch Evap			
						Temp	RH	Max	Min	Gmin	5	10	20	30	50	100																	
01	8	22	05	02	97	20.9	69	22.2	14.0	14.9	18.3	19.0	20.4	20.9	20.9	19.1	10	0	0.0	6.2	0	0	0	0	0	0	0	0	1005.5	0.0	0.0	2.3	Number of days with 2006 normal Snow/sleet falling 0 0.0 50% snow cover 09GMT 0 0.0 Hail or ice pellets 0 0.1 Thunder 2 2.0 Gale 0 0.0 Fog at 09GMT 0 0.3 Air frost 0 0.0 Ground frost 0 0.0 0.2mm precipitation 15 10.1 1.0mm precipitation 9 7.1 5.0mm precipitation 2 3.2 No sunshine 0 1.6 The mean temperature was only slightly above average, due to generally mild nights. There were very few hot days, a result of the wind coming from a N or NW direction on an unusually large number of days.
02	8	28	02	02	97	19.5	54	22.7	12.5	13.4	17.8	18.2	20.2	20.5	20.4	19.0	10	0	0.5	6.5	0	0	0	0	0	0	0	1008.5	1.3	0.0	2.9		
03	8	32	05	80	97	15.5	86	21.5	14.4	14.0	16.5	17.0	20.0	20.0	20.0	18.8	10	0	0.0	5.0	0	0	0	0	0	0	0	1012.0	0.0	0.0	1.6		
04	6	33	05	02	97	18.0	74	21.9	11.6	11.0	16.0	16.5	19.4	19.3	19.6	18.8	00	0	0.0	3.5	0	0	0	0	0	0	0	1018.5	0.0	0.0	2.0		
05	6	02	02	02	97	21.0	66	27.0	12.9	12.5	16.5	17.0	19.5	19.9	19.6	18.8	00	0	0.0	10.5	0	0	0	0	0	0	0	1021.5	0.0	0.0	2.0		
06	7	22	05	02	97	24.0	59	27.4	16.8	16.5	17.5	18.0	21.3	20.7	19.9	18.7	00	0	0.0	4.5	0	0	0	0	0	0	0	1021.5	0.0	0.0	2.8		
07	8	33	05	21	97	19.5	75	23.1	17.9	17.5	17.0	17.5	21.8	21.3	20.3	18.4	00	0	0.6	0.5	0	0	0	0	0	0	0	1021.0	0.3	0.0	1.9		
08	1	04	02	02	97	19.0	62	25.8	11.2	11.3	16.0	16.5	19.7	20.3	20.0	18.7	10	0	0.4	11.5	0	0	0	0	0	0	0	1024.5	1.0	0.0	3.5		
09	3	34	09	21	97	17.5	69	22.5	15.3	15.0	17.5	18.0	21.2	21.2	20.9	18.5	10	0	0.0	7.5	0	0	0	0	0	0	0	1017.5	0.0	0.0	3.3		
10	1	24	05	02	97	18.0	68	21.8	11.7	11.0	17.0	18.0	19.8	19.8	20.7	18.7	10	0	0.3	6.0	0	0	0	0	0	0	0	1015.0	0.1	0.0	3.0		
11	7	30	05	02	97	16.0	65	21.2	11.7	11.0	16.0	16.5	18.4	18.4	19.0	18.5	10	0	0.0	3.5	0	0	0	0	0	0	0	1013.5	0.0	0.0	3.1		
12	3	33	09	23	97	16.5	72	19.5	14.1	13.5	16.5	17.0	18.5	18.5	18.0	18.0	00	0	2.6	2.0	0	0	0	0	0	0	0	1012.0	2.7	0.0	3.3		
13	8	33	09	61	97	14.5	93	20.5	12.0	11.5	14.5	15.0	17.7	17.7	18.4	18.4	10	0	1.5	2.5	0	0	0	0	0	0	0	1012.0	2.4	0.0	2.0		
14	7	30	05	05	96	16.0	86	20.1	14.2	13.5	14.5	15.5	17.2	17.2	18.0	18.0	10	0	0.0	0.5	0	0	0	0	0	0	0	1011.0	0.0	0.0	1.0		
15	8	27	02	02	97	17.0	65	21.9	13.1	12.5	15.0	15.5	16.7	16.7	17.7	17.9	10	0	0.1	4.0	0	0	0	0	0	0	0	1009.0	0.1	0.0	1.8		
16	2	13	02	02	97	18.5	74	22.4	12.0	11.5	15.0	15.5	16.7	16.7	17.7	17.9	10	0	0.0	6.0	0	0	0	0	0	0	0	1003.0	0.0	0.0	1.4		
17	7	04	02	05	96	19.5	81	23.4	14.7	14.0	16.0	16.8	17.7	18.1	18.1	17.7	00	0	11.0	5.5	0	0	0	0	0	0	0	1000.0	6.4	0.0	1.4		
18	8	09	02	02	96	19.0	82	20.6	15.1	14.5	16.5	16.8	17.6	18.0	18.2	17.7	10	0	2.6	5.6	0	0	0	1	0	0	0	1001.0	2.0	0.0	1.1		
19	7	12	02	02	97	18.5	80	22.4	14.3	14.0	16.7	16.7	17.5	18.0	18.2	17.5	10	0	1.9	7.0	0	0	0	0	0	0	0	1009.0	3.2	0.0	1.8		
20	6	20	09	02	97	16.7	82	21.0	15.3	14.7	16.8	17.1	17.7	18.0	18.2	17.5	10	0	0.0	1.7	0	0	0	0	0	0	0	1014.5	0.0	0.0	1.2		
21	8	22	02	02	97	19.1	78	23.1	12.2	10.4	16.2	16.4	17.2	17.8	18.0	17.4	10	0	0.1	5.8	0	0	0	0	0	0	0	1015.5	0.1	0.0	1.6		
22	4	18	02	02	97	17.0	69	22.0	10.2	8.0	14.0	14.9	16.9	17.5	17.8	17.4	10	0	0.0	4.6	0	0	0	0	0	0	0	1020.0	0.0	0.0	2.2		
23	8	20	02	02	97	18.7	78	22.0	16.4	10.8	16.8	16.7	17.4	18.0	17.8	17.4	10	0	3.9	2.1	0	0	0	0	0	0	0	1014.5	2.9	0.0	1.1		
24	8	27	05	02	97	15.0	86	20.4	14.6	14.2	16.3	16.7	17.6	17.9	17.9	17.2	10	0	tr	2.8	0	0	0	0	0	0	0	1008.0	0.0	0.0	1.5		
25	7	27	02	02	97	17.1	67	23.1	8.4	7.1	13.8	14.3	16.2	17.1	17.5	17.2	10	0	5.9	7.9	0	0	0	0	0	0	0	1010.5	2.9	0.0	2.6		
26	8	18	02	02	96	17.5	85	21.5	15.4	11.6	16.4	16.7	16.9	17.6	17.7	17.1	10	0	0.5	2.0	0	0	0	0	0	0	0	1008.5	0.5	0.0	1.2		
27	1	27	02	02	97	18.5	72	22.5	12.3	10.0	15.0	15.5	17.0	17.7	17.7	17.1	10	0	4.2	11.0	0	0	0	0	0	0	0	1014.0	3.3	0.0	2.0		
28	6	24	05	02	97	16.5	75	20.5	13.5	11.0	15.5	16.2	17.7	17.9	17.6	17.2	10	0	0.8	9.0	0	0	0	0	0	0	0	1009.0	0.3	0.0	2.3		
29	1	22	02	02	97	18.0	62	20.1	11.6	9.0	14.7	15.3	16.6	17.4	17.5	17.1	00	0	1.8	8.8	0	0	0	0	0	0	0	1009.0	0.9	0.0	1.6		
30	1	27	02	02	07	16.8	71	20.4	9.2	7.3	13.4	14.2	15.5	17.0	17.3	17.0	10	0	tr	8.9	0	0	0	1	0	0	0	1019.5	0.0	0.0	2.4		
31	7	18	05	02	97	19.0	82	22.9	16.0	9.5	16.4	16.3	16.6	17.4	17.2	17.0	00	0	tr	1.9	0	0	0	0	0	0	0	1020.0	0.0	0.0	2.1		
Monthly means						18.0	74	22.2	13.4	12.2	16.0	16.5	18.2	18.5	18.6	17.9													1012.9				
Monthly totals																					38.7	164.8								30.4	0.0	64.0	
Highest values						24.0		27.4	17.9	17.5	18.3	19.0	21.8	21.3	20.9	19.1				11.0	11.5								6.4	0.0	3.5		
Lowest values						14.5	54	19.5	8.4	7.1	13.4	14.2	15.5	16.7	17.2	17.0																	
1971-2000 monthly climatological averages						76	22.4	12.6	10.5	16.0	16.7	17.7	17.8	17.3	16.4						54.2	188.5								1016.8	32.1	0.0	78.7

Key
 DD: date
 07GMT observations
 N cloud cover (oktas, 9=obscured) dd wind direction (degrees/10)
 ff wind speed (knots)
 ww present weather code
 1 cloud decreasing 21 recent rain
 2 sky not changing 44 fog
 3 cloud increasing 50 intermittent sligth drizzle
 5 haze 61 continuous light rain
 10 mist 80 light rain shower
 VV visibility (00-50 metres/100, 94 very poor, 95 poor, 96 moderate, 97 good)
 Soil temperatures are for 0700GMT beneath bare soil (5, 10, 20cm) or grass (30, 50, 100cm)
 09GMT observations
 Temp temperature (degC) RH relative humidity (%)
 E state of ground (00 dry, 10 moist, 20 wet, 90 cracked) SS snow depth (cm)
 Press air pressure (mb)
 24 hour readings
 Max maximum temperature (degC) beginning 09GMT Min minimum temperature (degC) ending 09GMT
 Gmin grass minimum temperature (degC) ending 09GMT Rain precipitation beginning 09GMT
 Sun sunshine (hours) sunrise-sunset Rain hrs hours of rainfall (>0.1mm/h) 09-09GMT
 Fr. Hrs hours of air frost (00-24GMT) Pch Evap Piche evaporation (ml) beginning 09GMT
 Days with
 S snow(5) or sleet(1) falling L 50% snow cover at 09GMT H hail or ice pellets
 T thunder heard G gale F fog at 09GMT
 This information (and data for earlier months) is also available at <http://www.met.rdg.a.uk/~brugge>

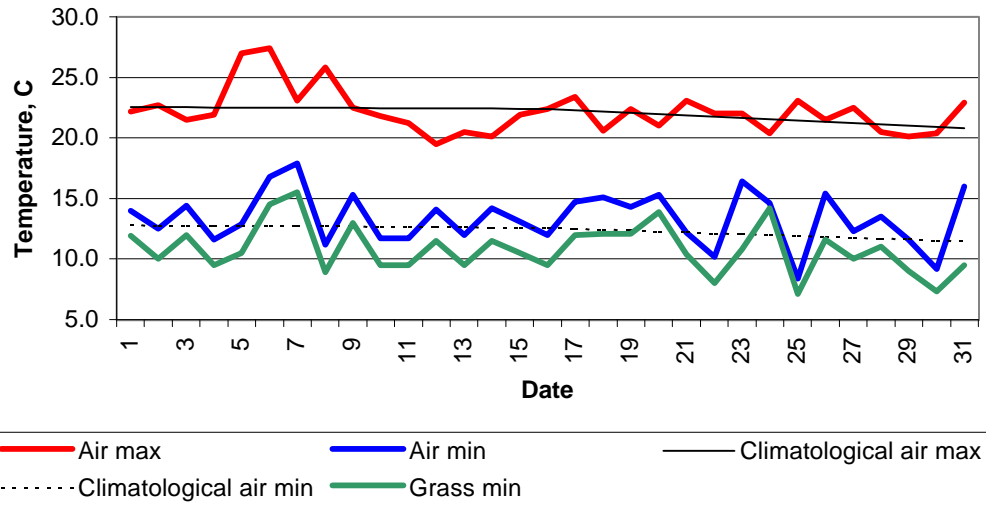
Daily soil temperatures, 0700GMT



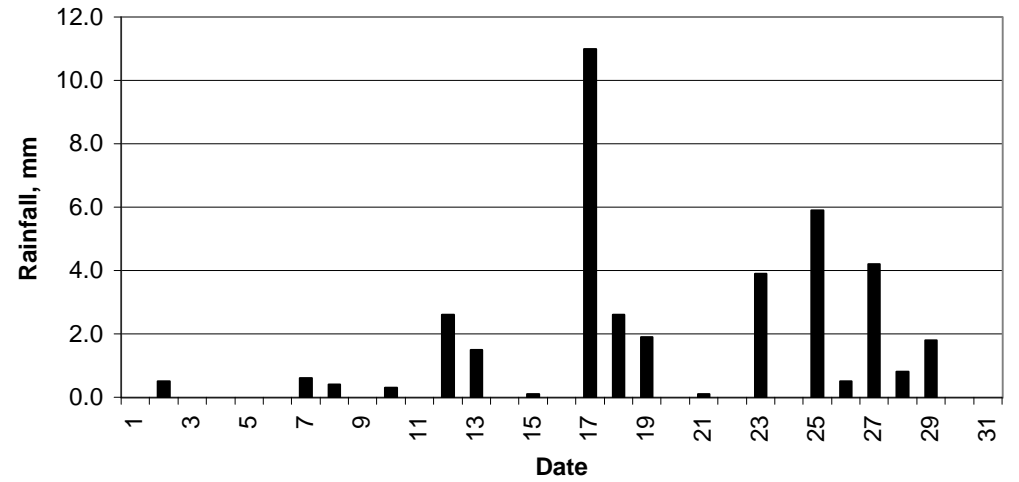
Mean sea level pressure, 0900GMT



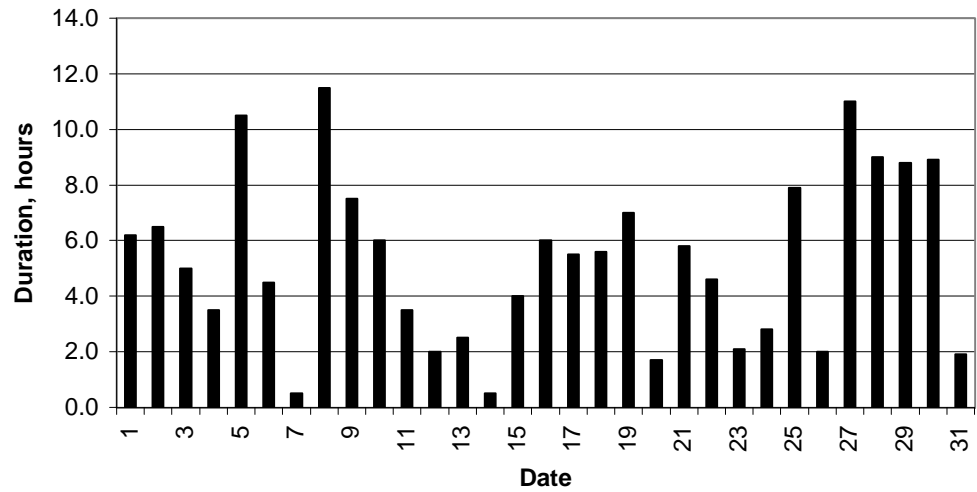
Daily temperature extremes



Daily rainfall



Daily sunshine



Daily evaporation

