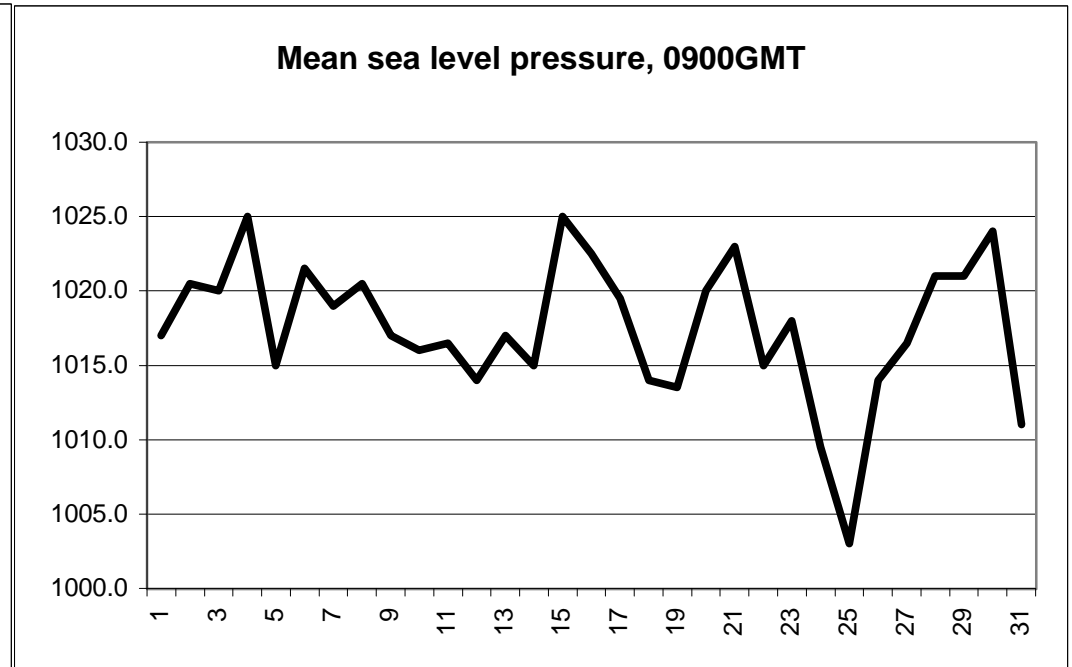
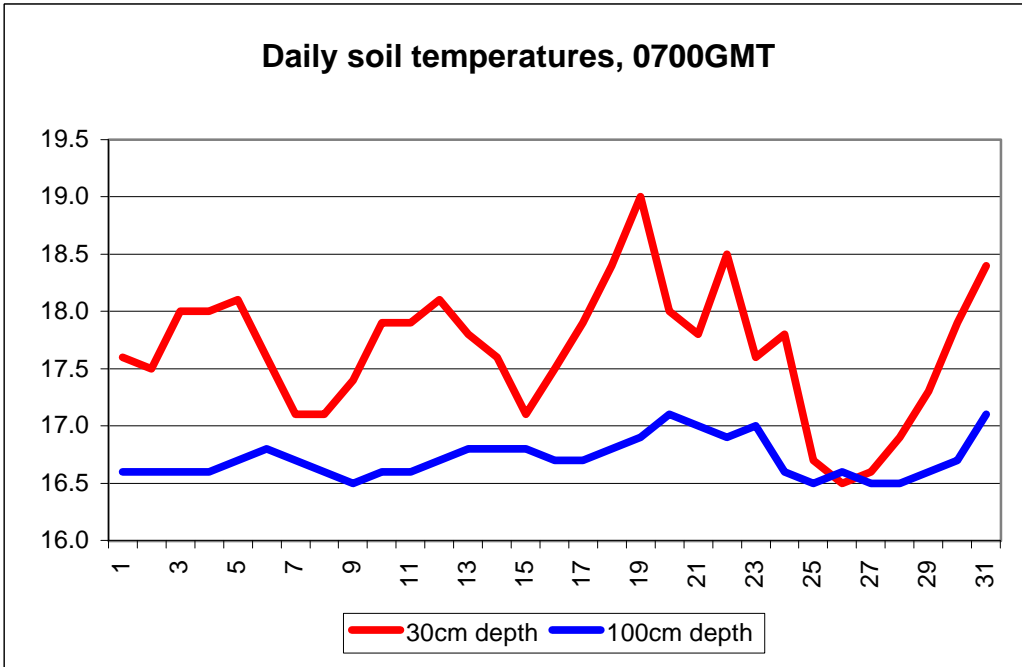


MAIDENHEAD METEOROLOGICAL OBSERVATIONS FOR AUGUST 2005

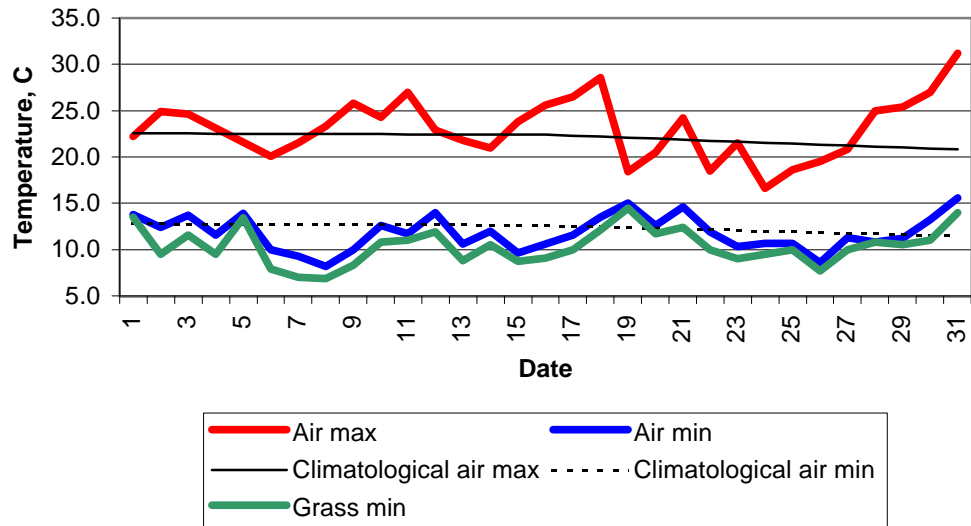
DD	N	dd	ff	ww	VV	0900GMT Temp	RH	Temperature Max	Temperature Min	Temperature Gmin	Soil temperatures (depth in cm)					E	SS	Rain	Sun	S	L	H	T	G	F	Press	Rain hrs	Fr. hrs	Pch Evap		
01	9	05	02	02	97	15.1	91	22.2	13.8	13.5	16.3	16.2	17.5	17.6	17.3	16.6	10	0	0.0	1.0	0	0	0	0	0	0	1017.0	0.0	0.0	1.4	Number of
02	9	32	02	44	05	16.9	91	24.9	12.4	9.5	15.6	16.1	17.1	17.5	17.2	16.6	10	0	0.2	9.1	0	0	0	0	0	0	1020.5	0.3	0.0	2.2	days with
03	6	27	05	02	97	19.7	75	24.6	13.7	11.6	17.1	17.4	18.0	18.0	17.4	16.6	10	0	0.0	12.1	0	0	0	0	0	0	1020.0	0.0	0.0	3.2	2005 normal
04	1	22	02	02	97	20.1	59	23.1	11.6	9.5	15.6	16.4	17.6	18.0	17.7	16.6	10	0	6.8	8.5	0	0	0	0	0	0	1025.0	7.3	0.0	2.5	Snow/sleet falling
05	8	20	05	61	94	17.3	95	21.6	13.9	13.4	16.9	17.3	18.0	18.1	17.7	16.7	10	0	1.0	6.1	0	0	0	0	0	0	1015.0	0.7	0.0	2.2	0 0.0
06	8	25	02	02	97	18.0	70	20.1	10.0	7.9	15.3	15.6	16.9	17.6	17.6	16.8	10	0	0.0	2.6	0	0	0	0	0	0	1021.5	0.0	0.0	2.0	50% snow cover 09GMT
07	1	36	09	02	97	17.5	70	21.5	9.3	7.0	14.9	15.1	16.3	17.1	17.1	16.7	10	0	0.0	13.0	0	0	0	0	0	0	1019.0	0.0	0.0	2.6	0 0.0
08	1	31	05	02	97	15.5	68	23.3	8.2	6.9	13.6	14.7	16.4	17.1	17.0	16.6	10	0	0.0	14.0	0	0	0	0	0	0	1020.5	0.0	0.0	2.9	Hail or ice pellets
09	6	33	02	02	97	19.1	58	25.8	10.0	8.3	15.4	15.6	17.0	17.4	17.3	16.5	10	0	0.0	12.2	0	0	0	0	0	0	1017.0	0.0	0.0	3.6	1 0.1
10	8	33	05	02	97	20.1	82	24.3	12.6	10.8	16.6	16.9	17.8	17.9	17.5	16.6	00	0	0.0	8.0	0	0	0	0	0	0	1016.0	0.0	0.0	2.5	Thunder
11	1	30	02	02	97	22.4	60	27.0	11.7	11.0	16.1	16.6	17.8	17.9	17.5	16.6	00	0	tr	7.2	0	0	0	0	0	0	1016.5	0.0	0.0	3.1	2 2.0
12	1	33	02	02	97	18.3	73	22.9	14.0	11.9	16.6	17.3	18.3	18.1	17.8	16.7	00	0	tr	3.4	0	0	0	0	0	0	1014.0	0.0	0.0	1.9	Gale
13	6	22	05	03	97	18.0	64	21.8	10.6	8.8	16.3	16.6	17.5	17.8	17.7	16.8	00	0	7.5	2.7	0	0	0	0	0	0	1017.0	5.1	0.0	1.4	0 0.0
14	8	30	09	02	97	16.6	82	21.0	12.0	10.5	15.9	16.4	17.2	17.6	17.5	16.8	10	0	0.1	6.3	0	0	0	0	0	0	1015.0	0.1	0.0	1.5	Fog at 09GMT
15	5	35	02	02	97	19.4	86	23.8	9.6	8.7	14.1	14.9	16.4	17.1	17.4	16.8	10	0	0.0	12.1	0	0	0	0	0	0	1025.0	0.0	0.0	2.2	0 0.3
16	6	23	02	02	97	21.7	70	25.6	10.6	9.1	15.5	15.8	17.0	17.5	17.4	16.7	10	0	0.0	9.5	0	0	0	0	0	0	1022.5	0.0	0.0	2.2	Air frost
17	0	19	02	02	97	22.7	70	26.5	11.6	10.0	15.6	16.3	17.7	17.9	17.6	16.7	00	0	0.0	13.1	0	0	0	0	0	0	1019.5	0.0	0.0	2.7	0 0.0
18	0	36	02	05	95	24.0	66	28.6	13.5	12.1	16.8	17.4	18.4	18.4	17.9	16.8	00	0	2.9	9.9	0	0	0	0	0	0	1014.0	3.4	0.0	3.6	Ground frost
19	8	33	02	60	95	15.7	95	18.4	15.0	14.5	17.7	18.3	19.0	19.0	18.4	16.9	10	0	5.9	0.0	0	0	0	0	0	0	1013.5	5.0	0.0	0.9	0 0.0
20	2	32	09	02	97	18.2	80	20.5	12.6	11.7	15.5	16.1	17.4	18.0	18.0	17.1	10	0	0.0	8.1	0	0	0	0	0	0	1020.0	0.0	0.0	2.3	0.2mm precipitation
21	7	31	05	02	97	20.2	69	24.2	14.6	12.4	16.5	16.6	17.4	17.8	17.8	17.0	10	0	4.6	10.5	0	0	0	0	0	0	1023.0	1.4	0.0	2.4	12 10.1
22	7	22	05	50	96	16.9	98	18.5	11.9	10.0	16.0	16.0	18.5	18.5	18.2	16.9	10	0	6.7	0.2	0	0	0	0	0	0	1015.0	3.7	0.0	1.0	1.0mm precipitation
23	6	30	05	02	97	16.5	61	21.5	10.3	9.0	15.0	15.0	16.5	17.6	17.9	17.0	10	0	2.6	10.0	0	0	0	0	0	0	1018.0	1.4	0.0	2.4	10 7.1
24	6	18	05	02	97	16.3	82	16.6	10.7	9.5	14.5	14.5	17.0	17.8	17.7	16.6	10	0	9.4	0.1	0	0	0	0	0	0	1009.5	6.0	0.0	0.7	5.0mm precipitation
25	5	27	05	21	97	15.8	68	18.6	10.7	10.0	13.5	14.0	16.0	16.7	17.1	16.5	10	0	0.9	8.5	0	0	5	1	0	0	1003.0	0.7	0.0	2.0	5 3.2
26	7	23	09	02	97	16.4	61	19.5	8.6	7.7	12.5	13.0	15.0	16.5	16.9	16.6	10	0	0.0	7.0	0	0	0	0	0	0	1014.0	0.0	0.0	1.5	No sunshine
27	7	02	05	02	97	16.7	81	20.8	11.3	10.0	13.5	14.0	16.0	16.6	16.9	16.5	10	0	0.0	1.5	0	0	0	0	0	0	1016.5	0.0	0.0	1.3	1 1.6
28	3	00	00	02	97	18.9	78	25.0	10.8	10.8	14.8	15.3	16.4	16.9	16.9	16.5	10	0	0.0	12.0	0	0	0	0	0	0	1021.0	0.0	0.0	2.3	The highest temperature
29	2	31	02	02	97	18.9	80	25.4	11.2	10.5	15.5	16.0	17.5	17.3	17.3	16.6	10	0	0.0	11.5	0	0	0	0	0	0	1021.0	0.0	0.0	1.6	occurred on the last day
30	3	15	02	02	97	20.8	79	27.0	13.2	11.0	17.5	17.5	18.0	17.9	17.5	16.7	00	0	0.0	11.5	0	0	0	0	0	0	1024.0	0.0	0.0	2.0	of the month - very
31	1	12	05	10	95	24.0	74	31.2	15.6	14.0	18.5	18.5	19.0	18.4	17.9	17.1	00	0	1.8	8.0	0	0	0	1	0	0	1011.0	0.9	0.0	2.1	unusual considering that
Monthly means						18.6	75	23.1	11.8	10.4	15.7	16.0	17.3	17.7	17.5	16.7											1017.6				it was above 31C. The
Monthly totals																			50.4	239.7							36.0	0.0	66.2	coolest August since 1998	
Highest values						24.0		31.2	15.6	14.5	18.5	18.5	19.0	19.0	18.4	17.1			9.4	14.0							7.3	0.0	3.6	and the only really warm	
Lowest values						15.1	58	16.6	8.2	6.9	12.5	13.0	15.0	16.5	16.9	16.5															The sunniest August
1971-2000 monthly climatological averages						76	22.4	12.6	10.5	16.0	16.7	17.7	17.8	17.3	16.4			54.2	188.5								1016.8	32.1	0.0	78.7	since 1998.

Key
 DD: date
 07GMT observations
 N cloud cover (oktas, 9=obscured) dd wind direction (degrees/10)
 ff wind speed (knots)
 ww present weather code
 1 cloud decreasing 21 recent rain
 2 sky not changing 44 fog
 3 cloud increasing 50 intermittent slight drizzle
 5 haze 60 intermittent light rain
 10 mist 61 continuous light rain
 VV visibility (00-50 metres/100, 94 very poor, 95 poor, 96 moderate, 97 good)
 Soil temperatures are for 0700GMT beneath bare soil (5, 10, 20cm) or grass (30, 50, 100cm)
 09GMT observations
 Temp temperature (degC) RH relative humidity (%)
 E state of ground (00 dry, 10 moist, 20 wet, 90 cracked) SS snow depth (cm)
 Press air pressure (mb)
 24 hour readings
 Max maximum temperature (degC) beginning 09GMT Min minimum temperature (degC) ending 09GMT
 Gmin grass minimum temperature (degC) ending 09GMT Rain precipitation beginning 09GMT
 Sun sunshine (hours) sunrise-sunset Rain hrs hours of rainfall (>0.1mm/h) 09-09GMT
 Fr. Hrs hours of air frost (00-24GMT) Pch Evap Piche evaporation (ml) beginning 09GMT
 Days with
 S snow(5) or sleet(1) falling L 50% snow cover at 09GMT H hail or ice pellets
 T thunder heard G gale F fog at 09GMT

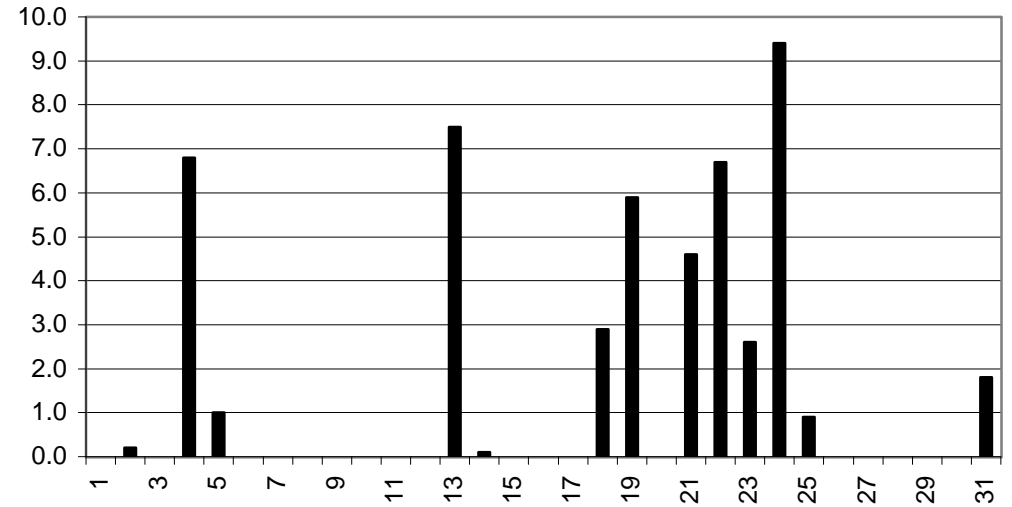
This information (and data for earlier months) is also available at <http://www.met.rdg.a.uk/~brugge>



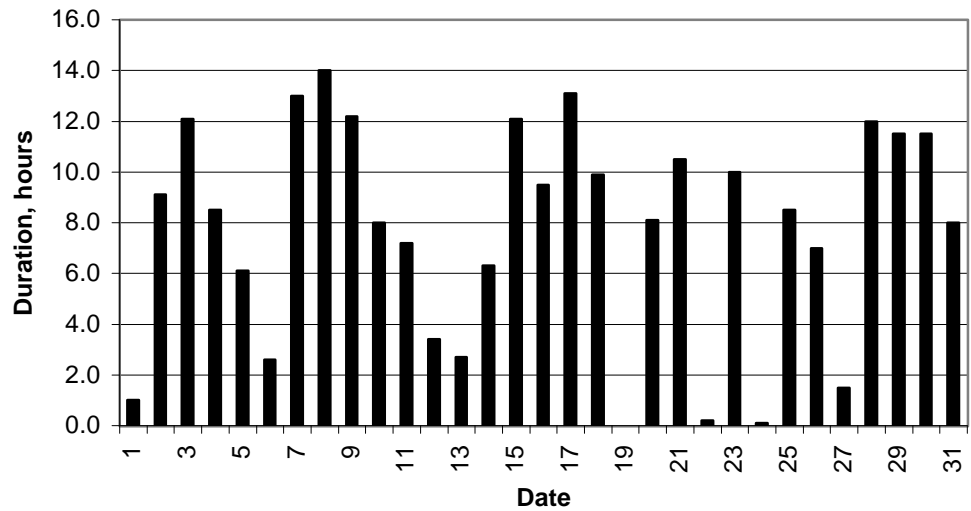
Daily temperature extremes



Daily rainfall



Daily sunshine



Daily evaporation

