

MAIDENHEAD METEOROLOGICAL OBSERVATIONS FOR AUGUST 2004

DD	N	dd	ff	ww	VV	0900GMT Temp	RH	Temperature Max	Min	Gmin	Soil temperatures (depth in cm)					E	SS	Rain	Sun	S	L	H	T	G	F	Press	Rain hrs	Fr. hrs	Pch Evap			
											5	10	20	30	50	100																
01	6	09	05	02	02	22.6	83	27.6	16.7	14.2	19.6	19.8	20.5	20.2	19.4	17.1	00	0	0.0	9.1	0	0	0	0	0	0	1021.5	0.0	0.0	3.4	Number of	
02	0	09	05	02	96	22.2	72	27.9	15.4	13.1	18.9	19.6	20.6	20.5	19.7	17.2	00	0	tr	8.7	0	0	0	0	0	0	1017.5	0.0	0.0	3.3	days with	
03	6	06	02	02	96	22.7	83	28.5	17.9	15.6	20.6	20.9	21.2	21.0	19.9	17.4	00	0	tr	2.9	0	0	0	1	0	0	1012.0	0.0	0.0	1.9	2004 normal	
04	5	33	02	02	97	25.1	60	28.9	14.2	12.3	18.3	19.2	20.4	20.5	19.9	17.6	00	0	0.0	9.9	0	0	0	0	0	0	1012.5	0.0	0.0	2.9	Snow/sleet falling	
05	7	08	02	02	96	22.7	80	28.7	18.0	14.7	19.9	20.5	20.9	21.0	20.1	17.6	00	0	12.0	2.9	0	0	0	1	0	0	1013.5	2.7	0.0	1.5	0 0.0	
06	0	23	02	02	97	22.8	81	28.5	14.7	13.3	17.7	18.7	20.1	20.5	19.7	17.8	10	0	0.0	12.3	0	0	0	0	0	0	1016.0	0.0	0.0	2.3	50% snow cover 09GMT	
07	1	15	02	02	97	23.6	83	30.1	14.0	11.9	18.0	18.7	20.0	20.7	19.9	18.0	10	0	0.0	12.7	0	0	0	0	0	0	1015.5	0.0	0.0	3.9	0 0.0	
08	0	11	09	02	97	26.0	71	30.9	16.2	13.3	19.4	19.6	20.3	20.8	20.1	18.0	00	0	1.0	8.1	0	0	0	0	0	0	1006.0	2.0	0.0	4.1	Hail or ice pellets	
09	8	18	02	02	97	21.3	90	22.2	20.4	18.9	21.1	21.6	21.9	21.5	20.3	18.1	00	0	18.2	0.0	0	0	0	0	0	0	1005.5	9.9	0.0	0.2	0 0.1	
10	8	27	02	21	96	18.1	98	25.2	17.8	17.6	19.1	19.4	20.2	20.5	20.0	18.2	10	0	0.6	7.5	0	0	0	0	0	0	1008.0	1.2	0.0	1.6	Thunder	
11	6	14	05	02	97	20.2	84	24.7	15.3	13.2	18.3	18.9	19.8	20.3	19.7	18.1	10	0	2.8	3.5	0	0	0	0	0	0	1010.5	2.9	0.0	2.1	6 2.0	
12	8	15	02	02	96	22.1	85	24.6	17.4	15.8	18.6	18.9	19.8	20.1	19.5	18.1	10	0	0.3	7.6	0	0	0	1	0	0	1004.5	0.3	0.0	2.0	Gale	
13	8	22	05	02	97	19.1	80	22.5	14.6	13.0	17.7	18.2	19.3	20.0	19.3	18.1	10	0	5.7	2.6	0	0	0	0	0	0	1007.0	1.0	0.0	2.1	0 0.0	
14	8	00	00	02	95	20.5	88	24.7	15.0	13.5	17.8	18.3	19.0	19.5	19.2	18.1	10	0	0.0	3.1	0	0	0	0	0	0	1018.5	0.0	0.0	1.7	Fog at 09GMT	
15	7	22	05	02	97	20.9	79	23.6	14.3	12.9	18.9	18.5	19.0	19.4	19.1	18.0	10	0	tr	2.4	0	0	0	0	0	0	1019.0	0.0	0.0	1.2	0 0.3	
16	7	23	09	02	97	18.1	81	22.0	15.6	13.9	17.8	18.3	19.2	19.4	19.0	17.9	10	0	0.8	1.5	0	0	0	0	0	0	1008.0	1.1	0.0	0.9	Air frost	
17	5	18	05	02	97	20.1	77	23.5	14.1	12.0	18.0	18.4	18.6	18.9	18.9	18.0	10	0	0.3	7.3	0	0	0	1	0	0	1004.0	0.6	0.0	1.9	0 0.0	
18	5	18	02	80	97	17.5	96	23.0	16.4	14.0	17.5	18.1	19.4	19.3	18.7	17.9	10	0	13.9	4.3	0	0	0	1	0	0	999.5	4.3	0.0	1.3	Ground frost	
19	6	23	09	21	97	18.6	79	22.7	14.2	12.0	17.0	17.4	18.2	18.8	18.5	17.8	10	0	3.6	9.5	0	0	0	0	0	0	1001.0	1.3	0.0	2.0	0 0.0	
20	5	18	05	02	97	17.5	79	22.8	13.5	11.0	16.0	16.6	17.9	18.5	18.4	17.7	10	0	11.8	6.0	0	0	0	1	0	0	1005.0	2.5	0.0	1.0	0.2mm precipitation	
21	4	27	09	02	97	15.6	78	21.0	10.6	8.0	16.0	16.5	16.4	18.4	18.2	17.7	10	0	0.0	9.0	0	0	0	0	0	0	1017.5	0.0	0.0	1.7	18 10.1	
22	7	13	05	02	97	17.3	72	21.9	11.4	9.0	16.0	16.5	17.4	18.2	18.2	17.5	10	0	10.6	5.3	0	0	0	0	0	0	1020.5	7.5	0.0	1.5	1.0mm precipitation	
23	8	13	09	61	96	16.8	95	22.1	13.4	11.0	15.5	16.0	17.7	18.4	18.2	17.5	10	0	0.8	6.0	0	0	0	0	0	0	1010.0	0.4	0.0	1.5	11 7.1	
24	7	18	05	02	97	18.5	87	22.0	14.7	12.0	16.5	16.8	17.7	18.3	18.1	17.4	10	0	0.5	3.5	0	0	0	0	0	0	1006.0	0.4	0.0	1.5	5.0mm precipitation	
25	6	27	05	02	97	17.5	78	22.1	12.8	11.0	16.5	16.8	17.6	18.3	18.0	17.4	10	0	0.5	4.0	0	0	0	0	0	0	1007.5	0.5	0.0	1.3	6 3.2	
26	7	31	05	02	97	17.6	75	21.6	12.5	10.0	15.5	16.1	17.2	17.8	17.8	17.3	10	0	2.3	5.3	0	0	0	0	0	0	1019.0	4.0	0.0	1.7	No sunshine	
27	8	23	05	61	97	16.9	94	20.9	13.6	11.0	15.0	15.7	17.1	17.7	17.6	17.2	10	0	4.0	9.5	0	0	0	0	0	0	1009.5	5.1	0.0	1.1	1 1.6	
28	8	23	09	61	96	17.1	69	20.5	8.7	6.5	14.5	14.7	16.0	17.3	17.4	17.0	10	0	0.0	5.5	0	0	0	0	0	0	1013.5	0.0	0.0	1.5	Overall a rather wet	
29	1	27	02	02	97	15.2	83	20.4	10.7	8.0	13.5	14.1	16.2	17.2	17.3	17.0	10	0	0.0	2.0	0	0	0	0	0	0	1012.0	0.0	0.0	1.7	month with frequent spells	
30	7	23	05	02	97	16.4	67	19.5	10.8	8.0	13.5	14.2	15.8	17.2	17.0	16.8	10	0	0.1	6.0	0	0	0	0	0	0	1013.5	0.1	0.0	1.8	of rain, some thundery	
31	8	22	02	02	97	15.2	81	20.6	9.0	6.7	14.0	14.2	15.5	17.0	16.8	16.8	10	0	0.0	8.0	0	0	0	0	0	0	1021.0	0.0	0.0	1.8	and very heavy. 20.4C on	
Monthly means						19.5	81	24.0	14.3	12.2	17.3	17.8	18.7	19.3	18.8	17.6											1011.5				the 9th was the highest	
Monthly totals																			89.8	186.0								47.8	0.0	58.4	August for nine years. Six	
Highest values						26.0		30.9	20.4	18.9	21.1	21.6	21.9	21.5	20.3	18.2			18.2	12.7								9.9	0.0	4.1	days with thunder was the	
Lowest values																																most for over 50 years in
1971-2000 monthly climatological averages						15.2	60	19.5	8.7	6.5	13.5	14.1	15.5	17.0	16.8	16.8																miss some of the heavier
						76	22.4	12.6	10.5	16.0	16.7	17.7	17.8	17.3	16.4			54.2	188.5								1016.8	32.1	0.0	78.7	falls that occurred locally.	

Key

DD: date

07GMT observations

N	cloud cover (oktas, 9=obscured)	dd	wind direction (degrees/10)
ff	wind speed (knots)		
ww	present weather code		
1	cloud decreasing	41	fog
2	sky not changing	50	intermittent light drizzle
3	cloud increasing	60	intermittent light rain
10	mist	61	continuous light rain
21	recent rain	80	light rain shower

VV visibility (00-50 metres/100, 94 very poor, 95 poor, 96 moderate, 97 good)

Soil temperatures are for 0700GMT beneath bare soil (5, 10, 20cm) or grass (30, 50, 100cm)

09GMT observations

Temp	temperature (degC)	RH	relative humidity (%)
E	state of ground (00 dry, 10 moist, 20 wet, 90 cracked)	SS	snow depth (cm)
Press	air pressure (mb)		

24 hour readings

Max	maximum temperature (degC) beginning 09GMT	Min	minimum temperature (degC) ending 09GMT
Gmin	grass minimum temperature (degC) ending 09GMT	Rain	precipitation beginning 09GMT
Sun	sunshine (hours) sunrise-sunset	Rain hrs	hours of rainfall (>0.1mm/h) 09-09GMT
Fr. Hrs	hours of air frost (00-24GMT)	Pch Evap	Piche evaporation (ml) beginning 09GMT

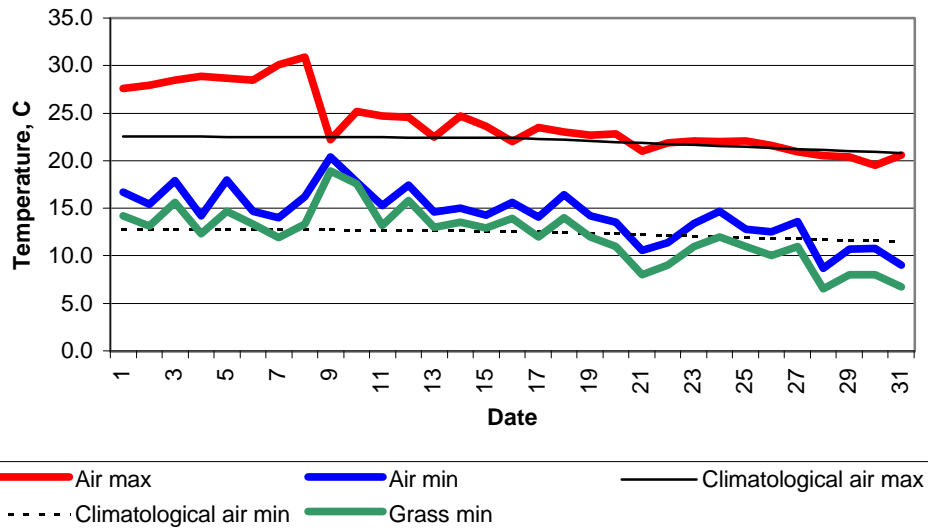
Days with

S	snow(5) or sleet(1) falling	L	50% snow cover at 09GMT	H	hail or ice pellets
T	thunder heard	G	gale	F	fog at 09GMT

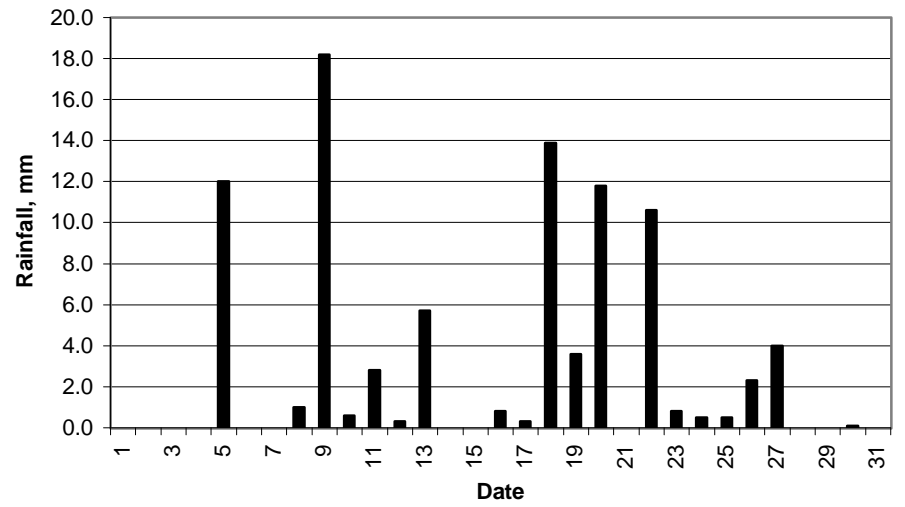
This information (and data for earlier months) is also available at

<http://www.met.rdg.a.uk/~brugge>

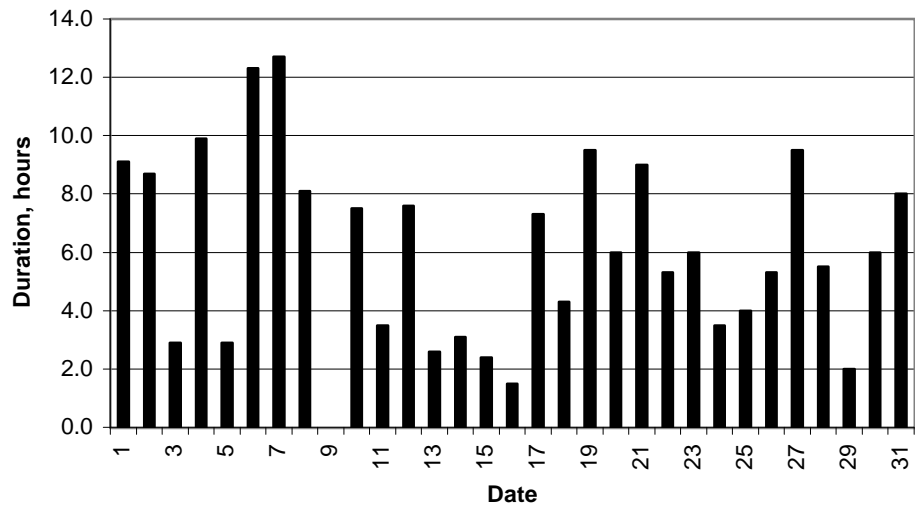
Daily temperature extremes



Daily rainfall



Daily sunshine



Daily evaporation

