

MAIDENHEAD METEOROLOGICAL OBSERVATIONS FOR APRIL 2019

DD	N	dd	ff	ww	VV	0900GMT Temp	RH	Temperature Max	Min	Gmin	Soil temperatures (depth in cm) 5	10	20	30	50	100	E	SS	Rain	Sun	S	L	H	T	G	F	Press	Rain hrs	Fr. hrs	Pch Evap				
01	0	09	05	02	97	8.6	72	16.1	3.2	0.9	6.6	6.9	8.5	9.2	9.1	9.0	03	0	0.0	11.2	0	0	0	0	0	0	1022.5	0.0	0.0	1.9	Number of			
02	8	31	02	03	96	5.9	92	9.9	1.3	-0.5	6.6	6.7	8.1	9.0	9.0	9.0	03	0	2.5	3.1	0	0	0	0	0	0	1005.0	3.9	0.0	0.6	days with			
03	1	27	02	02	97	4.0	91	10.8	-0.8	-2.3	4.6	5.2	7.2	8.5	8.6	9.0	10	0	0.7	5.2	0	0	0	0	0	0	1001.0	0.9	1.9	0.7	2019 normal			
04	8	13	05	25	97	6.3	79	8.5	1.2	1.4	5.5	5.6	6.9	8.1	8.3	9.0	10	0	3.9	0.4	0	0	0	0	0	0	995.0	4.8	0.0	1.0	Snow/sleet falling			
05	7	13	05	80	97	9.8	69	14.0	5.6	2.0	6.6	6.6	7.4	8.0	8.1	8.8	10	0	0.0	0.5	0	0	0	0	0	0	1002.0	0.0	0.0	1.9	0 0.9			
06	8	05	05	05	95	7.8	81	12.0	6.5	3.5	6.8	6.8	7.5	8.2	8.2	8.7	10	0	0.0	0.8	0	0	0	0	0	0	1007.0	0.0	0.0	1.1	50% snow cover 09GMT			
07	8	05	05	05	95	8.4	82	12.0	6.2	2.0	7.8	7.7	8.0	8.3	8.2	8.6	10	0	0.4	0.0	0	0	0	0	0	0	1009.5	0.2	0.0	0.5	0 0.0			
08	8	36	02	05	95	8.8	88	13.0	7.7	7.0	8.7	8.3	8.5	8.8	8.5	8.6	10	0	2.5	0.0	0	0	0	0	0	0	1012.0	2.0	0.0	0.4	Hail or ice pellets			
09	8	05	02	50	95	8.3	90	11.4	8.1	2.5	9.0	8.6	8.9	9.2	8.7	8.8	10	0	1.8	0.9	0	0	0	0	0	0	1015.5	3.5	0.0	1.2	0 1.0			
10	5	05	09	02	97	9.3	59	13.9	4.9	2.0	8.0	7.6	8.3	8.9	8.7	8.9	10	0	0.0	10.5	0	0	0	0	0	0	1020.0	0.0	0.0	2.5	Thunder			
11	3	05	05	02	97	7.8	50	13.2	0.9	-0.9	6.0	5.6	7.2	8.8	8.7	8.9	10	0	0.0	12.0	0	0	0	0	0	0	1027.0	0.0	0.0	2.0	0 1.1			
12	1	09	02	02	97	7.2	58	11.2	0.6	-1.0	5.1	5.7	7.4	8.7	8.6	8.9	03	0	0.0	3.7	0	0	0	0	0	0	1027.0	0.0	0.0	2.1	Gale			
13	0	09	05	02	97	7.2	55	10.6	0.8	-2.5	5.1	5.6	7.5	8.5	8.5	8.9	03	0	tr	6.1	0	0	0	0	0	0	1027.5	0.0	0.0	1.5	0 0.0			
14	0	09	05	02	97	5.7	64	10.6	-1.7	-2.8	4.4	4.8	6.7	8.1	8.2	8.8	03	0	0.0	7.3	0	0	0	0	0	0	1026.0	0.0	4.7	2.2	Fog at 09GMT			
15	7	13	09	02	97	10.9	49	15.5	3.9	1.0	6.6	6.5	7.3	8.0	8.1	8.8	03	0	0.0	9.7	0	0	0	0	0	0	1022.0	0.0	0.0	3.0	0 0.1			
16	7	27	02	05	96	11.8	72	15.9	7.4	5.0	8.3	8.3	8.9	8.8	8.2	8.7	03	0	tr	0.0	0	0	0	0	0	0	1015.0	0.0	0.0	1.2	Air frost			
17	4	05	02	05	96	11.5	70	19.2	5.9	3.6	8.3	8.4	9.4	9.3	8.6	8.8	03	0	0.0	1.2	0	0	0	0	0	0	1019.5	0.0	0.0	2.2	2 1.8			
18	7	09	05	05	96	13.9	72	22.0	8.1	6.4	9.6	9.8	10.4	10.0	9.2	8.9	03	0	0.0	9.0	0	0	0	0	0	0	1022.0	0.0	0.0	3.5	Ground frost			
19	4	05	02	02	97	16.9	57	24.7	6.7	4.0	9.3	9.5	10.6	10.5	9.7	9.1	03	0	0.0	12.2	0	0	0	0	0	0	1023.0	0.0	0.0	3.5	6 7.9			
20	1	05	02	02	97	19.1	51	25.4	5.5	2.7	10.0	10.0	11.0	11.0	10.2	9.3	03	0	0.0	12.5	0	0	0	0	0	0	1030.0	0.0	0.0	3.6	0.2mm precipitation			
21	0	05	02	02	97	17.5	52	25.1	5.7	1.6	9.8	10.1	11.6	11.6	10.7	9.6	03	0	0.0	12.7	0	0	0	0	0	0	1021.5	0.0	0.0	4.4	8 12.7			
22	7	09	02	03	97	16.1	53	25.4	6.2	3.0	10.7	11.1	12.2	12.0	11.1	9.8	90	0	0.0	8.7	0	0	0	0	0	0	1007.0	0.0	0.0	4.0	1.0mm precipitation			
23	7	09	02	02	97	15.8	62	23.0	10.5	7.5	12.3	12.5	13.0	12.5	11.5	10.1	90	0	0.0	1.1	0	0	0	0	0	0	997.0	0.0	0.0	3.0	4 9.3			
24	7	13	02	02	97	15.4	71	17.5	9.9	6.6	12.7	12.7	13.1	12.7	11.7	10.3	90	0	0.6	1.4	0	0	0	0	0	0	991.0	0.3	0.0	1.6	5.0mm precipitation			
25	7	13	05	02	97	13.0	72	16.5	8.7	6.1	11.4	11.6	12.2	12.2	11.6	10.5	10	0	tr	8.2	0	0	0	0	0	0	996.5	0.0	0.0	2.9	0 3.0			
26	7	18	05	02	97	13.8	70	17.6	3.2	0.2	9.8	10.0	11.3	12.0	11.6	10.6	90	0	0.8	6.6	0	0	0	0	0	0	1008.5	1.7	0.0	2.4	No sunshine			
27	8	22	09	02	97	10.0	62	13.1	7.5	4.6	10.1	10.6	11.6	12.0	11.5	10.6	10	0	tr	4.4	0	0	0	0	0	0	1007.5	0.0	0.0	2.8	3 3.1			
28	8	31	09	60	97	11.3	69	15.0	7.2	4.0	10.4	10.4	11.1	11.4	11.2	10.7	90	0	tr	3.3	0	0	0	0	0	0	1019.5	0.0	0.0	1.8	Wet at times for the first 9			
29	8	05	02	02	97	11.0	77	16.0	4.5	0.9	9.1	9.7	11.0	11.5	11.1	10.7	90	0	0.0	7.7	0	0	0	0	0	0	1026.0	0.0	0.0	1.7	days, then mainly dry and			
30	8	13	05	02	96	11.6	74	18.8	4.6	0.9	10.3	10.6	11.5	11.7	11.2	10.7	90	0	0.0	9.3	0	0	0	0	0	0	1025.5	0.0	0.0	2.2	sunny. An unusually warm			
Monthly means						10.8	69	15.9	5.0	2.3	8.3	8.5	9.5	9.9	9.6	9.4											1014.3					Winds predominantly from a		
Monthly totals																				13.2	169.7								17.3	6.6	63.4	from the SW. However, due		
Highest values																																	to some warm days the	
Lowest values						19.1		25.4	10.5	7.5	12.7	12.7	13.1	12.7	11.7	10.7					3.9	12.7								4.8	4.7	4.4	mean temperature for the	
1981-2010 monthly climatological averages						4.0	49	8.5	-1.7	-2.8	4.4	4.8	6.7	8.0	8.1	8.6																		month was above average.
						77	14.5	5.2	2.2	8.0	8.2	9.2	9.5	9.0	8.7					47.6	158.0							1015.2	44.9	6.0	55.5			

Key

DD: date

07GMT observations

N	cloud cover (oktas, 9=obscured)	dd	wind direction (degrees/10)
ff	wind speed (knots)		
ww	present weather code		
1	cloud decreasing	25	recent rain shower
2	sky not changing	41	fog patches
3	cloud increasing	61	continuous slight rain
10	mist	80	light rain shower
21	recent rain	81	moderate rain shower
VV	visibility (00-50 metres/100, 94 very poor, 95 poor, 96 moderate, 97 good)		

Soil temperatures are for 0700GMT beneath bare soil (5, 10, 20cm) or grass (30, 50, 100cm)

09GMT observations

Temp	temperature (degC)	RH	relative humidity (%)
E	state of ground (X1 slight snow, 10 moist, 20 wet, 90 cracked)	SS	snow depth (cm)
Press	air pressure (mb)		

24 hour readings

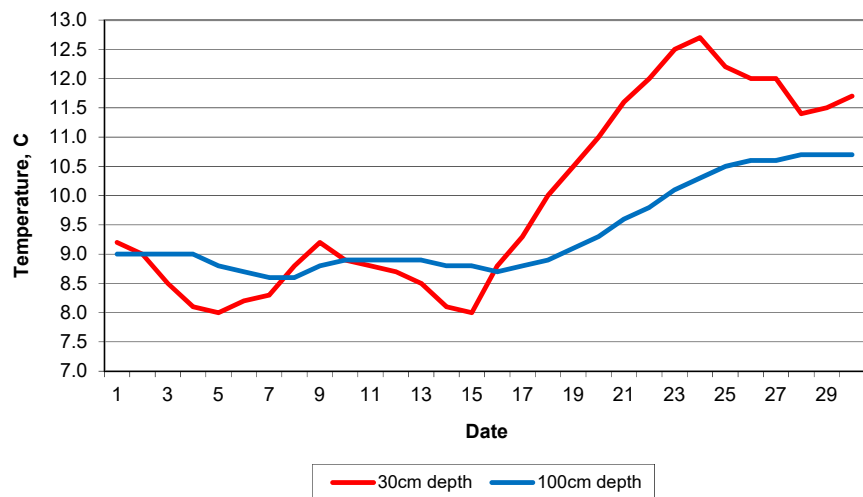
Max	maximum temperature (degC) beginning 09GMT	Min	minimum temperature (degC) ending 09GMT
Gmin	grass minimum temperature (degC) ending 09GMT	Rain	precipitation beginning 09GMT
Sun	sunshine (hours) sunrise-sunset	Rain hrs	hours of rainfall (>0.1mm/h) 09-09GMT
Fr. Hrs	hours of air frost (00-24GMT)	Pch Evap	Piche evaporation (ml) beginning 09GMT

Days with

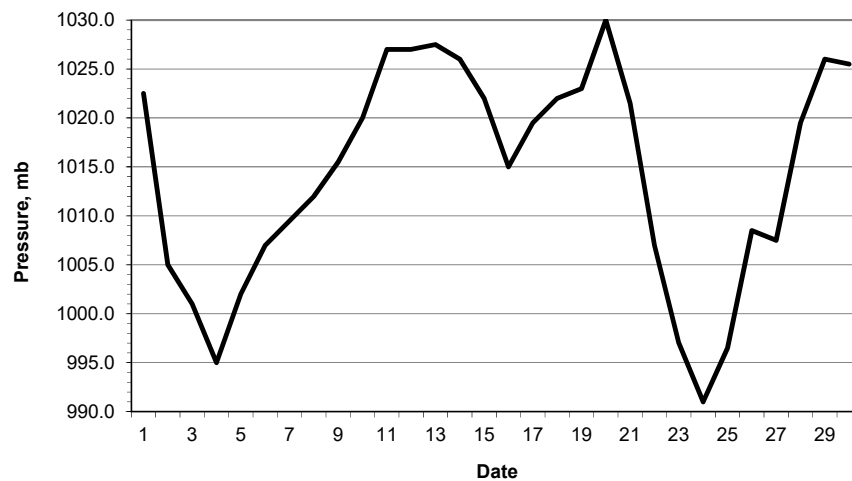
S	snow(5) or sleet(1) falling	L	50% snow cover at 09GMT	H	hail or ice pellets
T	thunder heard	G	gale	F	fog at 09GMT

This information (and data for earlier months) is also available at <http://www.met.rdg.ac.uk/~brugge>

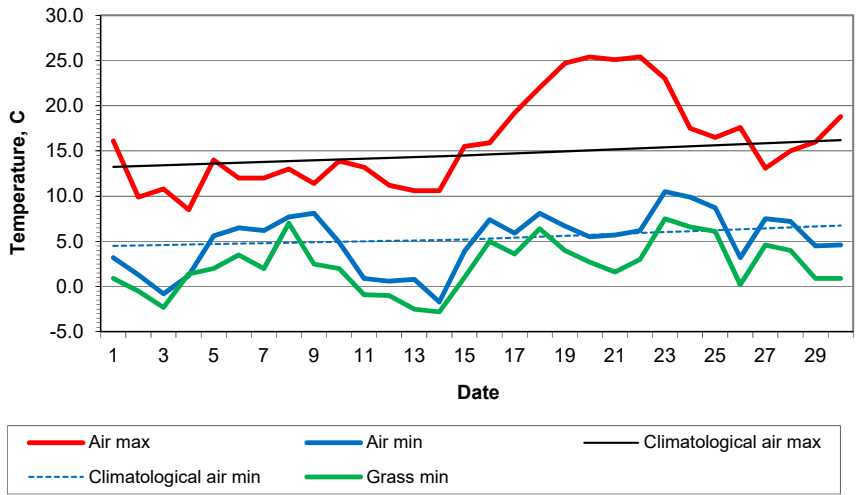
Daily soil temperatures, 0700GMT



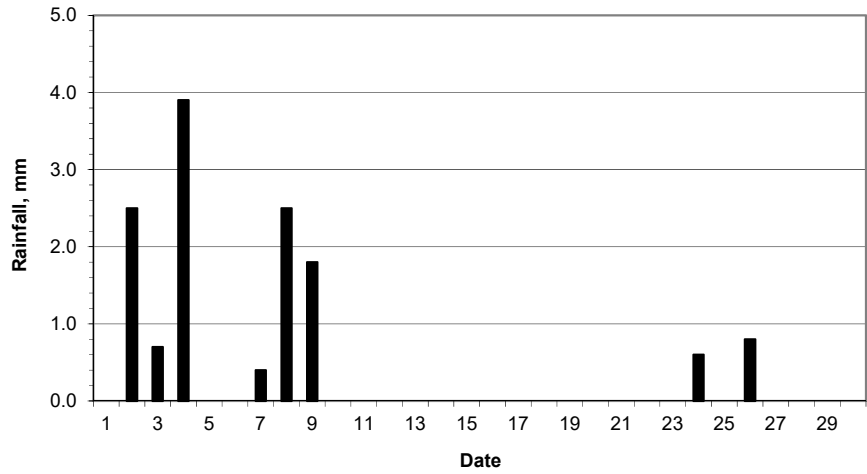
Mean sea level pressure, 0900GMT



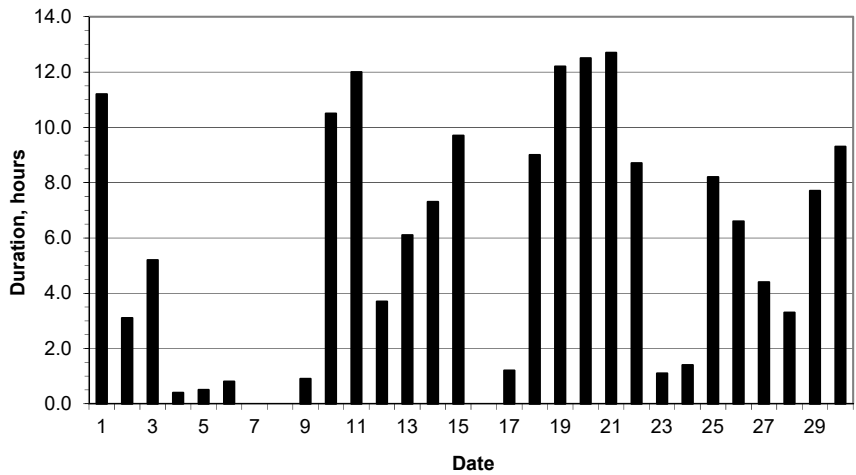
Daily temperature extremes



Daily rainfall



Daily sunshine



Daily evaporation

