

MAIDENHEAD METEOROLOGICAL OBSERVATIONS FOR APRIL 2018

DD	N	dd	ff	ww	VV	0900GMT		Temperature			Soil temperatures (depth in cm)						E	SS	Rain	Sun	S	L	H	T	G	F	Press	Rain hrs	Fr. hrs	Pch Evap																																			
						Temp	RH	Max	Min	Gmin	5	10	20	30	50	100																																																	
01	8	31	02	02	97	5.9	71	8.7	4.2	3.1	5.9	5.6	6.4	6.9	6.6	7.0	10	0	13.1	0.4	0	0	0	0	0	0	1012.5	10.1	0.0	0.8	Number of days with 2018 normal Snow/sleet falling 0 0.9 50% snow cover 09GMT 0 0.0 Hail or ice pellets 0 1.0 Thunder 2 1.1 Gale 0 0.0 Fog at 09GMT 0 0.1 Air frost 0 1.8 Ground frost 2 7.9 0.2mm precipitation 13 12.7 1.0mm precipitation 10 9.3 5.0mm precipitation 6 3.0 No sunshine 11 3.1 A mild month without any air frost, but wet and dull. The 30th was an unusually cold day while the 19th brought the highest April temperatures locally for over a century. It was the dullest April since 1998 - and had only 2 h more sunshine than February 2018. The mean minimum temperature was, along with 2011, the highest in April in over 50 years.																																		
02	8	18	05	60	96	8.7	91	11.3	3.7	3.3	6.5	6.2	6.5	6.8	6.6	7.0	20	0	3.7	0.0	0	0	0	0	0	999.5	6.0	0.0	0.2																																				
03	8	22	05	02	97	11.3	87	14.1	8.7	6.5	8.6	8.2	7.9	7.3	6.7	7.1	20	0	1.4	1.6	0	0	0	0	0	993.5	2.0	0.0	1.2																																				
04	7	13	09	01	97	10.7	71	11.2	5.6	0.3	8.3	7.9	8.0	8.0	7.3	7.1	10	0	0.5	0.3	0	0	0	0	0	992.0	1.0	0.0	1.3																																				
05	1	31	09	02	97	8.2	57	13.9	3.4	-0.6	5.9	6.2	7.6	8.1	7.6	7.3	10	0	tr	9.7	0	0	0	0	0	1015.0	0.0	0.0	2.0																																				
06	8	13	09	02	97	9.7	65	17.0	4.0	-1.7	6.5	6.2	7.5	8.2	7.7	7.4	10	0	0.0	8.5	0	0	0	0	0	1012.0	0.0	0.0	2.2																																				
07	8	09	05	02	97	11.9	70	17.4	6.4	2.4	8.2	8.1	8.5	8.5	7.8	7.6	10	0	1.0	1.0	0	0	0	0	0	1004.0	2.9	0.0	1.2																																				
08	8	09	05	21	97	9.9	88	11.6	9.3	6.0	9.5	9.5	9.6	9.0	8.2	7.7	10	0	7.9	0.0	0	0	0	0	0	1008.0	12.7	0.0	0.4																																				
09	8	04	02	61	94	8.6	90	9.7	8.3	8.0	9.2	9.2	9.5	9.1	8.4	7.9	20	0	11.0	0.0	0	0	0	0	0	1008.0	17.3	0.0	0.1																																				
10	8	09	02	02	95	9.0	91	13.4	8.6	8.1	9.2	8.9	9.1	9.0	8.5	8.0	20	0	5.4	0.3	0	0	0	0	0	999.5	5.2	0.0	0.5																																				
11	8	09	05	21	95	7.5	88	10.1	7.5	7.0	9.6	9.6	9.7	9.4	8.6	8.1	20	0	0.1	0.0	0	0	0	0	0	1007.0	0.1	0.0	0.5																																				
12	8	36	05	02	96	7.6	89	10.5	7.1	7.3	8.9	8.8	9.3	9.3	8.7	8.3	10	0	0.0	0.0	0	0	0	0	0	1004.5	0.0	0.0	0.5																																				
13	8	27	02	02	96	8.3	85	12.4	6.7	6.8	8.3	8.3	8.9	9.0	8.6	8.3	10	0	0.0	0.0	0	0	0	0	0	1005.5	0.0	0.0	0.6																																				
14	3	00	00	02	97	12.7	76	19.9	6.2	2.4	8.4	8.6	9.3	9.2	8.6	8.4	10	0	0.0	8.1	0	0	0	0	0	1017.0	0.0	0.0	1.7																																				
15	8	13	02	02	96	11.2	84	15.0	8.0	3.6	9.9	9.9	10.2	10.0	9.1	8.5	10	0	0.3	0.0	0	0	0	0	0	1009.5	0.7	0.0	1.0																																				
16	1	22	05	02	97	12.0	63	15.1	6.4	2.2	8.5	8.8	10.0	10.1	9.3	8.6	10	0	0.0	5.7	0	0	0	0	0	1012.5	0.0	0.0	2.6																																				
17	7	18	02	02	97	13.7	51	18.0	10.3	5.9	9.5	9.6	10.1	10.1	9.4	8.8	10	0	0.0	2.2	0	0	0	0	0	1017.5	0.0	0.0	2.3																																				
18	1	18	02	02	97	18.5	61	25.1	12.0	1.9	11.4	11.4	11.3	10.7	9.8	9.0	10	0	0.0	12.4	0	0	0	0	0	1027.0	0.0	0.0	3.7																																				
19	1	00	00	02	97	19.9	61	29.0	9.2	5.9	11.0	11.2	12.1	11.9	10.6	9.1	10	0	0.0	12.7	0	0	0	0	0	1023.0	0.0	0.0	3.5																																				
20	1	31	02	02	97	19.7	66	26.2	10.7	7.0	12.2	12.7	13.4	12.8	11.3	9.4	10	0	0.0	13.1	0	0	0	0	0	1022.0	0.0	0.0	3.3																																				
21	0	13	05	02	96	17.3	67	23.5	10.9	7.4	12.7	12.8	13.5	13.7	12.0	9.8	03	0	5.9	7.4	0	0	0	1	0	1020.0	2.3	0.0	2.3																																				
22	0	13	02	02	97	18.1	74	23.4	11.9	9.0	13.6	13.6	14.0	13.7	12.3	10.1	10	0	0.0	9.3	0	0	0	1	0	1008.0	0.0	0.0	2.4																																				
23	7	27	05	03	97	12.5	71	17.0	6.7	4.0	11.5	11.8	13.3	13.7	12.6	10.5	10	0	0.0	5.6	0	0	0	0	0	1015.5	0.0	0.0	2.2																																				
24	7	27	05	02	97	12.9	75	16.5	11.7	9.7	12.8	12.8	13.2	13.2	12.4	10.7	03	0	0.2	0.0	0	0	0	0	0	1015.0	0.2	0.0	1.6																																				
25	4	27	09	02	97	13.7	63	16.1	6.5	4.4	10.4	10.9	12.4	12.8	12.1	10.9	10	0	tr	8.4	0	0	0	0	0	1012.5	0.0	0.0	2.3																																				
26	1	27	09	02	97	11.5	62	16.5	5.0	3.1	9.4	9.8	11.5	12.5	12.0	10.9	03	0	2.2	11.0	0	0	0	0	0	1016.0	2.0	0.0	2.5																																				
27	8	13	05	61	96	8.7	89	11.0	7.6	5.1	10.6	10.8	11.9	12.2	11.7	10.9	10	0	8.1	0.0	0	0	0	0	0	1008.0	12.4	0.0	0.4																																				
28	8	36	05	21	97	8.3	97	8.9	7.7	8.7	10.4	10.4	11.4	11.7	11.3	10.9	20	0	0.1	0.0	0	0	0	0	0	1009.5	0.1	0.0	0.7																																				
29	8	36	05	02	97	7.9	85	8.2	6.8	7.9	9.3	9.4	10.5	11.1	11.0	10.8	10	0	tr	0.0	0	0	0	0	0	1012.0	0.0	0.0	1.5																																				
30	8	31	13	02	97	6.8	73	9.9	6.1	5.5	7.7	7.8	9.3	10.3	10.4	10.6	10	0	0.0	0.1	0	0	0	0	0	1005.5	0.0	0.0	0.7																																				
Monthly means																												11.4	75	15.4	7.6	5.0	9.5	9.5	10.2	10.3	9.6	8.9												1010.4															
Monthly totals																																							60.9	117.8												75.0	0.0	46.2											
Highest values																												19.9	29.0	12.0	9.7	13.6	13.6	14.0	13.7	12.6	10.9												13.1	13.1												17.3	0.0	3.7	
Lowest values																												5.9	51	8.2	3.4	-1.7	5.9	5.6	6.4	6.8	6.6	7.0																											
1981-2010 monthly climatological averages																												7.7	14.5	5.2	2.2	8.0	8.2	9.2	9.5	9.0	8.7												47.6	158.0												1015.2	44.9	6.0	55.5

Key
 DD: date
 07GMT observations
 N cloud cover (oktas, 9=obscured) dd wind direction (degrees/10)
 ff wind speed (knots)
 ww present weather code
 1 cloud decreasing 25 recent rain shower
 2 sky not changing 41 fog patches
 3 cloud increasing 61 continuous slight rain
 10 mist 80 light rain shower
 21 recent rain 81 moderate rain shower

VV visibility (00-50 metres/100, 94 very poor, 95 poor, 96 moderate, 97 good)
 Soil temperatures are for 0700GMT beneath bare soil (5, 10, 20cm) or grass (30, 50, 100cm)

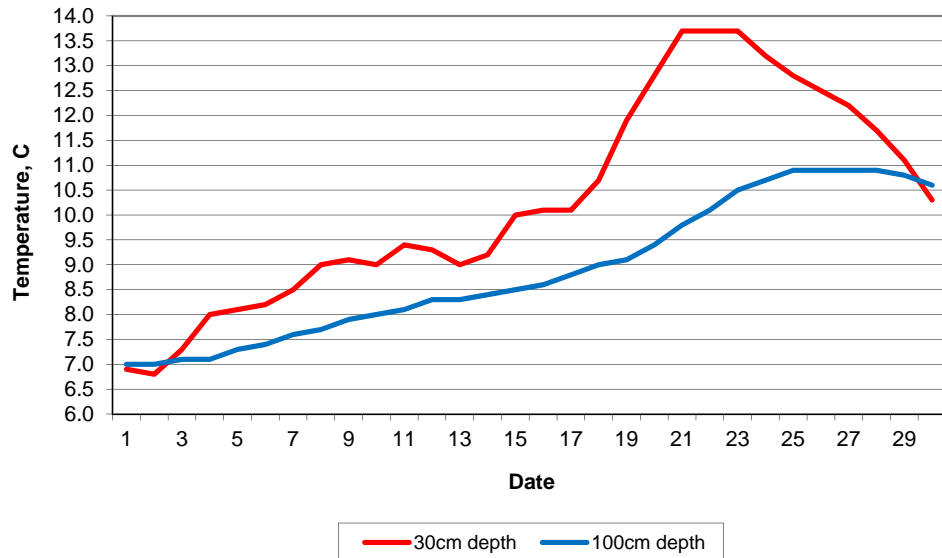
09GMT observations
 Temp temperature (degC) RH relative humidity (%)
 E state of ground (X1 slight snow, 10 moist, 20 wet, 90 cracked) SS snow depth (cm)
 Press air pressure (mb)

24 hour readings
 Max maximum temperature (degC) beginning 09GMT Min minimum temperature (degC) ending 09GMT
 Gmin grass minimum temperature (degC) ending 09GMT Rain precipitation beginning 09GMT
 Sun sunshine (hours) sunrise-sunset Rain hrs hours of rainfall (>0.1mm/h) 09-09GMT
 Fr. Hrs hours of air frost (00-24GMT) Pch Evap Piche evaporation (ml) beginning 09GMT

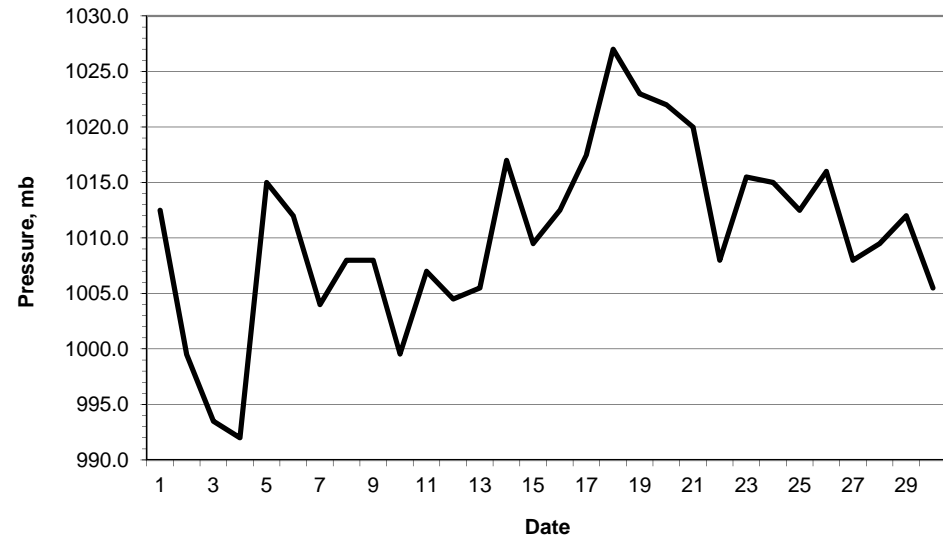
Days with
 S snow(5) or sleet(1) falling L 50% snow cover at 09GMT H hail or ice pellets
 T thunder heard G gale F fog at 09GMT

This information (and data for earlier months) is also available at <http://www.met.rdg.ac.uk/~brugge>

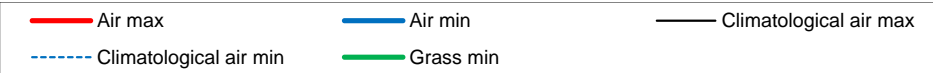
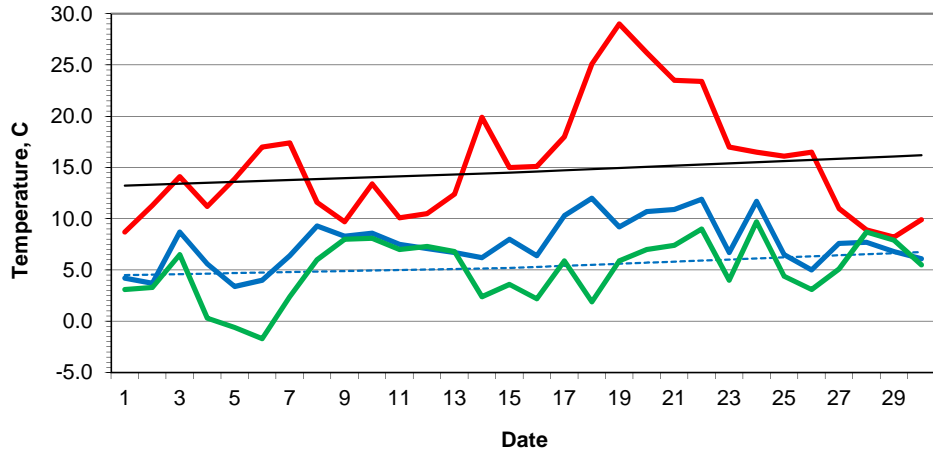
Daily soil temperatures, 0700GMT



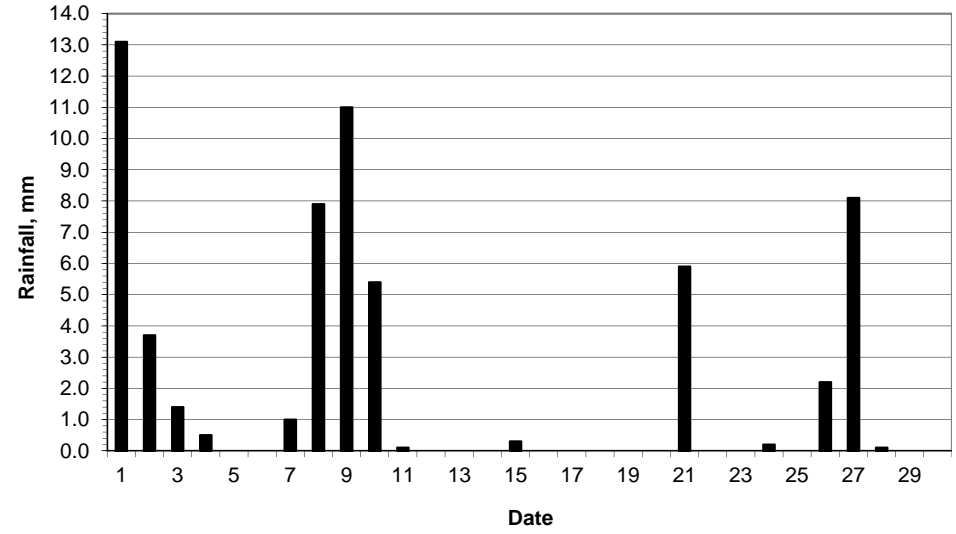
Mean sea level pressure, 0900GMT



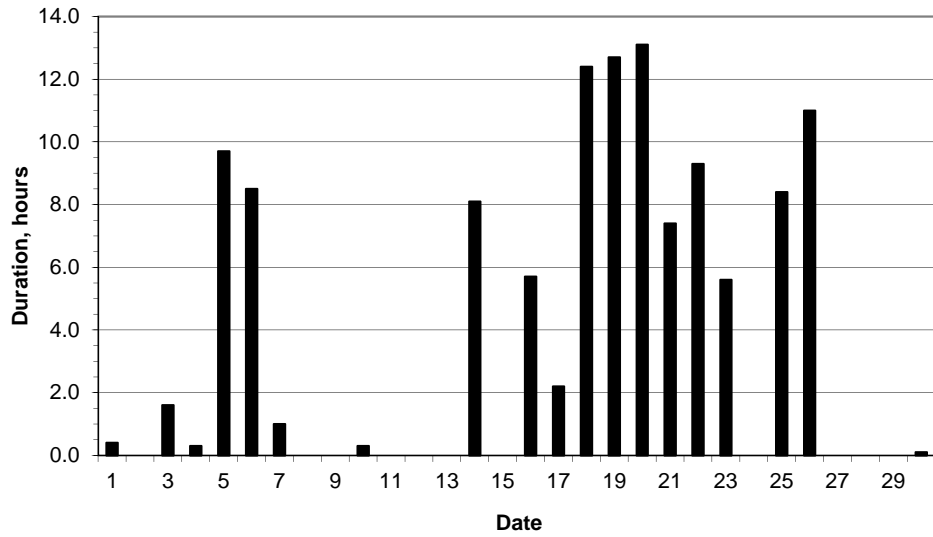
Daily temperature extremes



Daily rainfall



Daily sunshine



Daily evaporation

