

MAIDENHEAD METEOROLOGICAL OBSERVATIONS FOR APRIL 2013

DD	N	dd	ff	ww	VV	0900GMT		Temperature			Soil temperatures (depth in cm)						E	SS	Rain	Sun	S	L	H	T	G	F	Press	Rain hrs	Fr. hrs	Pch Evap																									
						Temp	RH	Max	Min	Gmin	5	10	20	30	50	100																																							
01	8	05	05	02	97	2.7	80	6.7	0.3	-3.0	2.6	2.6	3.5	4.2	4.0	5.1	10	0	0.0	4.7	0	0	0	0	0	0	1011.5	0.0	0.0	1.8	Number of																								
02	0	04	09	02	97	4.8	73	9.6	-0.4	-3.8	1.1	1.3	2.7	3.9	4.1	5.1	00	0	0.0	12.1	0	0	0	0	0	0	1014.5	0.0	1.2	2.7	days with																								
03	2	04	05	03	97	3.5	72	9.6	0.4	-2.8	1.7	1.9	3.3	4.2	4.2	5.1	00	0	0.0	6.4	0	0	0	0	0	0	1019.0	0.0	0.0	2.1	2013 normal																								
04	8	04	09	02	97	2.9	72	4.0	0.4	-1.5	2.3	2.3	3.5	4.1	4.1	5.1	00	0	tr	0.1	5	0	0	0	0	0	1015.0	0.0	0.0	2.0	Snow/sleet falling																								
05	5	36	05	01	97	4.0	74	8.6	1.4	-0.5	2.6	2.3	3.2	4.0	4.0	5.1	00	0	0.0	2.1	0	0	0	0	0	0	1015.5	0.0	0.0	2.4	1 0.9																								
06	4	34	13	03	97	5.8	56	11.8	-0.7	-4.5	3.3	2.6	3.2	4.1	4.0	5.1	00	0	0.0	10.6	0	0	0	0	0	0	1024.0	0.0	2.1	1.9	50% snow cover 09GMT																								
07	7	22	02	02	97	5.7	69	11.1	-2.6	-5.6	3.2	2.7	3.6	4.4	4.3	5.1	00	0	0.0	6.2	0	0	0	0	0	0	1023.0	0.0	5.7	2.2	0 0.0																								
08	8	09	05	02	97	6.2	68	11.4	3.9	1.9	4.9	4.4	5.0	5.1	4.6	5.1	00	0	3.1	2.7	0	0	0	0	0	0	1006.0	3.2	0.0	2.2	Hail or ice pellets																								
09	8	06	09	61	96	5.4	95	9.7	3.6	1.5	4.9	4.5	5.3	5.4	4.8	5.2	10	0	0.0	0.1	0	0	0	0	0	0	996.0	0.0	0.0	0.9	3 1.0																								
10	8	36	05	02	94	4.8	90	12.0	3.3	1.6	5.0	4.9	5.5	5.6	5.1	5.4	10	0	13.6	2.2	0	0	0	0	0	0	1007.0	11.5	0.0	1.0	Thunder																								
11	8	04	02	10	94	6.6	95	12.4	3.5	4.2	6.6	6.2	6.8	6.2	5.5	5.4	10	0	2.5	1.4	0	0	0	0	0	0	999.0	1.7	0.0	0.6	2 1.1																								
12	8	13	05	60	95	9.7	95	12.2	6.6	3.8	7.1	6.7	6.8	6.5	5.6	5.6	10	0	6.3	1.2	0	0	0	0	0	0	993.0	2.3	0.0	0.6	Gale																								
13	8	18	02	10	96	9.5	92	16.0	2.2	-0.6	5.7	5.7	6.7	6.9	6.1	5.8	10	0	4.1	1.1	0	0	0	0	0	0	1012.5	5.6	0.0	1.0	0 0.0																								
14	7	22	09	02	97	16.0	63	20.0	9.5	6.2	10.3	9.0	8.4	7.4	6.4	6.0	10	0	0.1	4.9	0	0	0	0	0	0	1012.5	0.1	0.0	2.4	Fog at 09GMT																								
15	2	22	05	02	97	12.9	77	16.0	10.2	8.6	8.7	9.2	9.5	8.5	7.2	6.2	10	0	0.0	3.5	0	0	0	0	0	0	1017.0	0.0	0.0	1.8	0 0.1																								
16	7	22	09	02	97	13.6	70	17.0	9.4	6.7	10.0	9.5	9.5	8.8	7.5	6.5	10	0	0.1	4.7	0	0	0	0	0	0	1013.5	0.1	0.0	2.0	Air frost																								
17	8	22	05	21	96	12.3	88	18.1	8.4	4.3	10.0	9.6	9.6	9.0	8.1	6.9	10	0	0.0	4.7	0	0	0	0	0	0	1015.0	0.0	0.0	2.3	5 1.8																								
18	6	20	13	02	97	12.1	60	14.8	8.7	5.9	8.9	8.9	9.6	9.4	8.1	7.1	10	0	1.6	8.1	0	0	4	1	0	0	1012.0	0.6	0.0	2.4	Ground frost																								
19	8	27	02	02	97	11.0	72	14.0	7.0	3.5	8.4	8.4	9.0	9.1	8.2	7.3	10	0	tr	5.5	0	0	0	0	0	0	1025.5	0.0	0.0	2.2	13 7.9																								
20	0	27	02	02	97	9.7	54	15.9	0.9	-1.6	7.2	7.1	8.1	9.0	8.4	7.6	10	0	0.0	12.8	0	0	0	0	0	0	1034.0	0.0	0.0	2.3	0.2mm precipitation																								
21	4	13	02	03	97	10.7	63	16.9	-0.4	-2.0	6.1	6.6	8.0	9.0	8.4	7.6	10	0	0.0	6.9	0	0	0	0	0	0	1023.5	0.0	0.8	1.0	10 12.7																								
22	6	22	02	03	97	11.2	74	15.5	5.4	1.9	8.2	8.4	9.4	9.3	8.5	7.7	10	0	0.0	2.5	0	0	0	0	0	0	1017.5	0.0	0.0	2.6	1.0mm precipitation																								
23	0	27	02	02	97	15.1	68	20.8	9.1	5.0	9.6	9.7	10.2	9.6	8.6	7.8	10	0	0.0	13.0	0	0	0	0	0	0	1020.5	0.0	0.0	2.1	8 9.3																								
24	6	22	02	03	97	13.7	77	20.5	7.8	5.1	10.7	10.3	11.0	10.4	9.0	8.0	00	0	0.3	3.3	0	0	0	0	0	0	1024.0	1.0	0.0	1.5	5.0mm precipitation																								
25	7	22	02	02	97	16.6	70	22.9	10.3	7.7	12.1	11.9	12.0	10.9	9.3	8.2	00	0	7.4	10.7	0	0	0	0	0	0	1022.0	3.9	0.0	2.3	3 3.0																								
26	8	31	02	21	97	9.2	88	14.7	6.7	6.1	10.4	11.1	11.9	11.5	9.8	8.5	10	0	0.4	6.2	0	0	5	0	0	0	1017.0	0.2	0.0	2.0	No sunshine																								
27	7	31	09	02	97	6.6	77	11.1	1.3	-1.5	8.0	8.3	9.7	10.6	9.8	8.7	10	0	1.6	6.0	0	0	5	1	0	0	1015.5	0.7	0.0	1.7	0 3.1																								
28	4	13	02	03	97	10.4	60	13.0	-0.7	-1.9	6.6	6.6	8.1	9.5	9.4	8.8	10	0	0.0	3.8	0	0	0	0	0	0	1019.0	0.0	1.9	2.1	Colder than normal, by																								
29	0	27	05	02	97	12.5	56	15.0	6.6	3.7	7.9	8.4	9.2	9.6	9.1	8.8	10	0	0.0	8.5	0	0	0	0	0	0	1016.0	0.0	0.0	2.3	about 1 degC both day and																								
30	1	31	02	02	97	11.5	59	15.1	2.9	-0.6	7.1	7.6	9.2	9.9	9.3	8.8	00	0	0.0	13.0	0	0	0	0	0	0	1025.5	0.0	0.0	2.8	night, with more frost than																								
Monthly means																												9.2	74	13.9	4.2	1.6	6.7	6.6	7.4	7.5	6.9	6.6													1015.5				average, but also a sunny
Monthly totals																																								41.1	169.0				30.9	11.7	57.2	very cold with remarkably							
Highest values																												16.6	22.9	10.3	8.6	12.1	11.9	12.0	11.5	9.8	8.8													13.6	13.0				low soil temperatures, but
Lowest values																												2.7	54	4.0	-2.6	-5.6	1.1	1.3	2.7	3.9	4.0	5.1																then warmed up later.	
1981-2010 monthly climatological averages																												7.7	14.5	5.2	2.2	8.0	8.2	9.2	9.5	9.0	8.7													47.6	158.0				

Key
 DD: date
 07GMT observations
 N cloud cover (oktas, 9=obscured) dd wind direction (degrees/10)
 ff wind speed (knots)
 ww present weather code
 1 cloud decreasing 25 recent rain shower
 2 sky not changing 41 fog patches
 3 cloud increasing 61 continuous slight rain
 10 mist 80 light rain shower
 21 recent rain 81 moderate rain shower

VV visibility (00-50 metres/100, 94 very poor, 95 poor, 96 moderate, 97 good)
 Soil temperatures are for 0700GMT beneath bare soil (5, 10, 20cm) or grass (30, 50, 100cm)

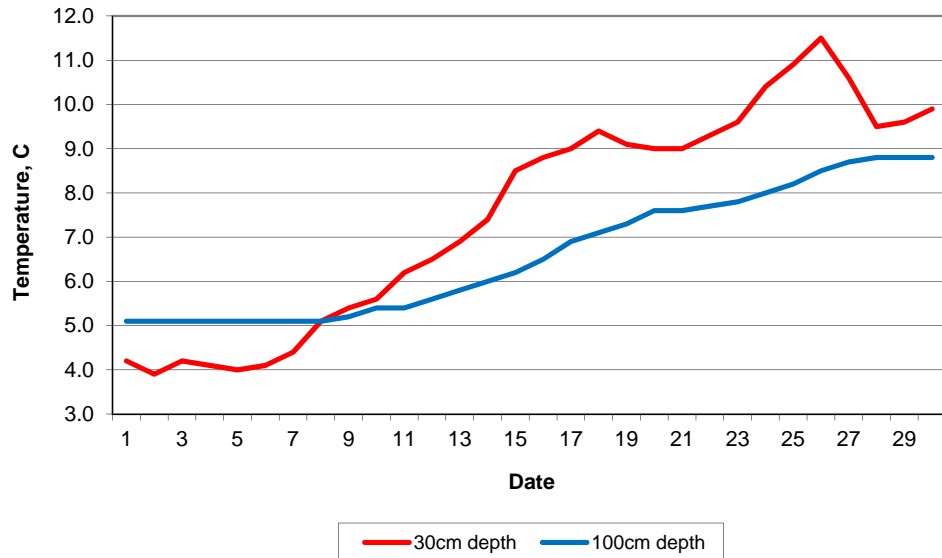
09GMT observations
 Temp temperature (degC) RH relative humidity (%)
 E state of ground (X1 slight snow, 10 moist, 20 wet, 90 cracked) SS snow depth (cm)
 Press air pressure (mb)

24 hour readings
 Max maximum temperature (degC) beginning 09GMT Min minimum temperature (degC) ending 09GMT
 Gmin grass minimum temperature (degC) ending 09GMT Rain precipitation beginning 09GMT
 Sun sunshine (hours) sunrise-sunset Rain hrs hours of rainfall (>0.1mm/h) 09-09GMT
 Fr. Hrs hours of air frost (00-24GMT) Pch Evap Piche evaporation (ml) beginning 09GMT

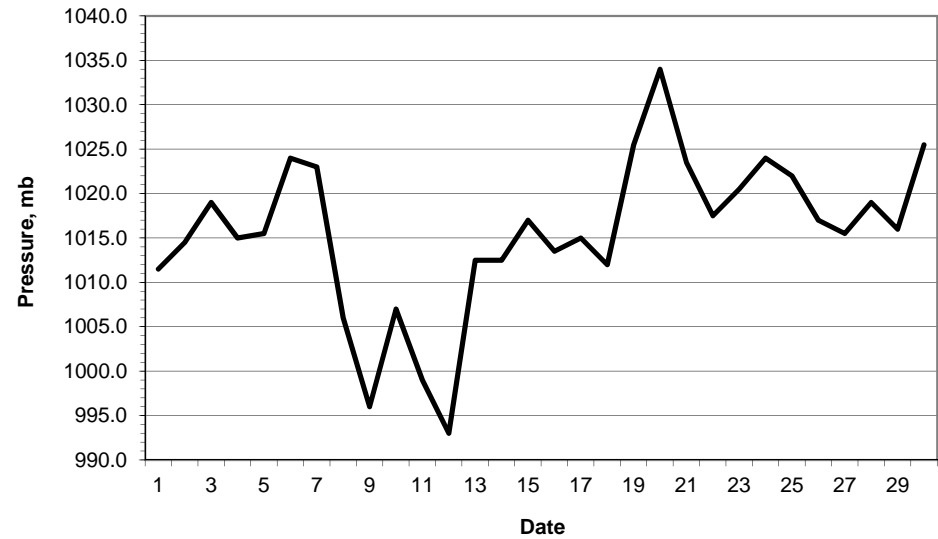
Days with
 S snow(5) or sleet(1) falling L 50% snow cover at 09GMT H hail or ice pellets
 T thunder heard G gale F fog at 09GMT

This information (and data for earlier months) is also available at <http://www.met.rdg.ac.uk/~brugge>

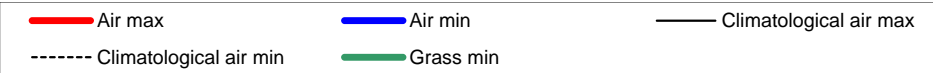
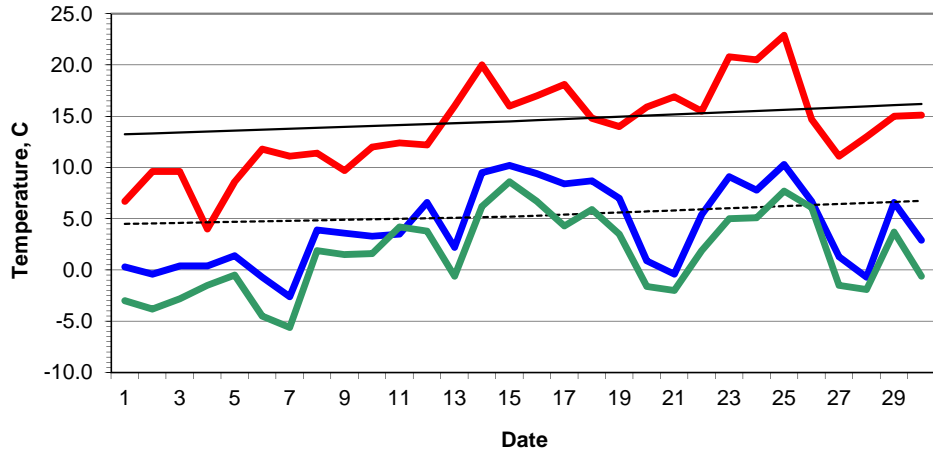
Daily soil temperatures, 0700GMT



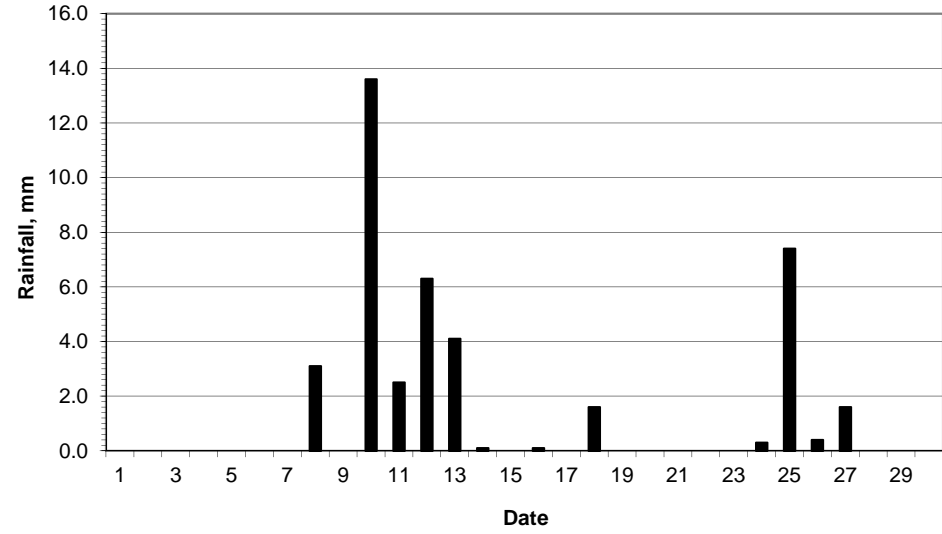
Mean sea level pressure, 0900GMT



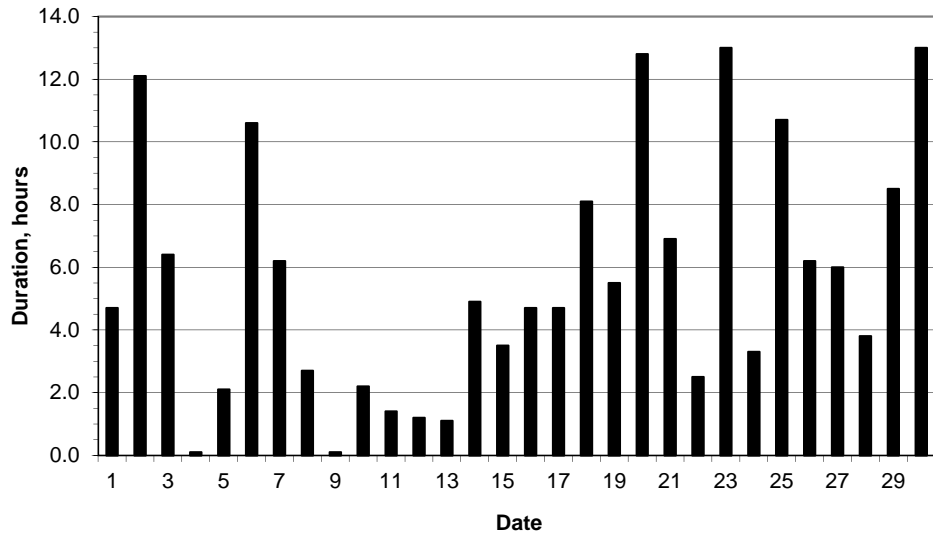
Daily temperature extremes



Daily rainfall



Daily sunshine



Daily evaporation

