

MAIDENHEAD METEOROLOGICAL OBSERVATIONS FOR APRIL 2011

| DD | N | dd | ff | ww | VV | 0900GMT | | Temperature | | | Soil temperatures (depth in cm) | | | | | | E | SS | Rain | Sun | S | L | H | T | G | F | Press | Rain hrs | Fr. hrs | Pch Evap | |
|---|---|----|----|----|----|---------|------|-------------|------|------|---------------------------------|------|------|------|------|------|----|----|------|------|------|-------|---|---|---|--------|--------|----------|---------|----------|---|
| | | | | | | Temp | RH | Max | Min | Gmin | 5 | 10 | 20 | 30 | 50 | 100 | | | | | | | | | | | | | | | |
| 01 | 8 | 22 | 17 | 02 | 97 | 12.5 | 87 | 15.5 | 11.9 | 9.0 | 11.1 | 10.6 | 10.6 | 10.0 | 9.0 | 8.4 | 10 | 0 | tr | 2.4 | 0 | 0 | 0 | 0 | 0 | 0 | 1019.5 | 0.0 | 0.0 | 1.6 | Number of days with 2011 normal Snow/sleet falling 0 1.0 50% snow cover 09GMT 0 0.0 Hail or ice pellets 0 1.0 Thunder 1 0.8 Gale 0 0.0 Fog at 09GMT 0 0.1 Air frost 0 1.9 Ground frost 1 9.0 0.2mm precipitation 3 12.8 1.0mm precipitation 2 9.5 5.0mm precipitation 0 3.2 No sunshine 2 3.1 The mean maximum temperature was the highest for April since before 1953. Overall, it was the warmest April since before 1868.. The highest maximum temperature was the highest in April since 1949. 2007 was drier with about half this months total.rainfall. but the total March-April rainfall was the lowest since 1938. A very sunny month. |
| 02 | 7 | 18 | 05 | 03 | 97 | 15.5 | 77 | 18.5 | 10.0 | 5.7 | 10.6 | 10.3 | 10.5 | 10.1 | 9.3 | 8.5 | 10 | 0 | 0.0 | 1.6 | 0 | 0 | 0 | 0 | 0 | 1009.0 | 0.0 | 0.0 | 1.4 | | |
| 03 | 6 | 20 | 09 | 02 | 96 | 11.0 | 84 | 15.8 | 4.0 | 1.4 | 8.7 | 8.9 | 9.9 | 10.2 | 9.6 | 8.7 | 10 | 0 | tr | 3.4 | 0 | 0 | 0 | 0 | 0 | 1015.0 | 0.0 | 0.0 | 1.1 | | |
| 04 | 0 | 22 | 02 | 02 | 95 | 9.5 | 78 | 14.0 | 3.3 | 0.5 | 7.4 | 8.0 | 9.5 | 10.1 | 9.6 | 8.9 | 10 | 0 | 2.6 | 4.8 | 0 | 0 | 0 | 0 | 0 | 1021.5 | 4.6 | 0.0 | 1.2 | | |
| 05 | 8 | 23 | 09 | 60 | 96 | 10.3 | 91 | 16.6 | 8.3 | 2.5 | 9.4 | 9.6 | 9.7 | 9.9 | 9.6 | 8.9 | 10 | 0 | 0.1 | 0.0 | 0 | 0 | 0 | 0 | 0 | 1020.0 | 0.1 | 0.0 | 1.5 | | |
| 06 | 7 | 20 | 05 | 02 | 97 | 16.6 | 52 | 22.9 | 10.3 | 8.1 | 10.6 | 10.4 | 10.6 | 10.1 | 9.5 | 9.0 | 10 | 0 | 0.0 | 11.5 | 0 | 0 | 0 | 0 | 0 | 1026.0 | 0.0 | 0.0 | 3.3 | | |
| 07 | 3 | 26 | 02 | 02 | 97 | 14.5 | 76 | 23.0 | 6.9 | 3.0 | 9.4 | 9.7 | 11.0 | 10.9 | 10.0 | 9.1 | 00 | 0 | 0.0 | 9.2 | 0 | 0 | 0 | 0 | 0 | 1029.0 | 0.0 | 0.0 | 2.3 | | |
| 08 | 0 | 27 | 02 | 02 | 97 | 15.0 | 62 | 22.1 | 6.2 | 3.0 | 10.1 | 10.7 | 11.1 | 11.5 | 10.3 | 9.1 | 00 | 0 | 0.0 | 12.3 | 0 | 0 | 0 | 0 | 0 | 1028.5 | 0.0 | 0.0 | 3.0 | | |
| 09 | 0 | 20 | 02 | 02 | 97 | 15.2 | 61 | 20.6 | 7.4 | 3.4 | 10.3 | 10.6 | 11.6 | 11.6 | 10.6 | 9.4 | 00 | 0 | 0.0 | 11.8 | 0 | 0 | 0 | 0 | 0 | 1027.0 | 0.0 | 0.0 | 3.1 | | |
| 10 | 4 | 22 | 02 | 02 | 97 | 13.0 | 70 | 22.0 | 5.7 | 2.0 | 9.4 | 9.8 | 11.2 | 11.6 | 10.8 | 9.7 | 00 | 0 | 0.0 | 11.3 | 0 | 0 | 0 | 0 | 0 | 1025.0 | 0.0 | 0.0 | 3.2 | | |
| 11 | 7 | 21 | 02 | 03 | 97 | 14.6 | 75 | 21.7 | 5.6 | 3.4 | 9.9 | 10.1 | 11.6 | 11.5 | 10.8 | 9.8 | 00 | 0 | tr | 5.9 | 0 | 0 | 0 | 0 | 0 | 1023.0 | 0.0 | 0.0 | 2.8 | | |
| 12 | 4 | 32 | 05 | 03 | 97 | 11.3 | 64 | 16.0 | 5.7 | 2.5 | 9.4 | 10.0 | 11.6 | 11.7 | 10.8 | 9.9 | 00 | 0 | 0.0 | 10.4 | 0 | 0 | 0 | 0 | 0 | 1031.0 | 0.0 | 0.0 | 2.0 | | |
| 13 | 8 | 21 | 05 | 02 | 97 | 7.2 | 89 | 13.9 | 2.5 | -0.2 | 8.8 | 9.4 | 10.6 | 11.3 | 10.9 | 10.1 | 00 | 0 | 1.0 | 0.6 | 0 | 0 | 0 | 0 | 0 | 1025.0 | 1.8 | 0.0 | 1.4 | | |
| 14 | 8 | 22 | 02 | 02 | 96 | 9.5 | 88 | 13.5 | 5.8 | 3.0 | 9.8 | 9.9 | 10.6 | 10.9 | 10.6 | 10.1 | 00 | 0 | 0.0 | 0.0 | 0 | 0 | 0 | 0 | 0 | 1020.5 | 0.0 | 0.0 | 1.1 | | |
| 15 | 8 | 22 | 02 | 02 | 97 | 11.7 | 68 | 16.9 | 8.1 | 7.4 | 10.2 | 10.3 | 10.9 | 10.9 | 10.4 | 10.0 | 10 | 0 | 0.0 | 0.1 | 0 | 0 | 0 | 0 | 0 | 1021.5 | 0.0 | 0.0 | 1.8 | | |
| 16 | 7 | 23 | 05 | 02 | 97 | 14.5 | 73 | 19.6 | 8.6 | 8.1 | 11.0 | 11.0 | 11.7 | 11.3 | 10.7 | 10.0 | 00 | 0 | 0.0 | 2.4 | 0 | 0 | 0 | 0 | 0 | 1023.5 | 0.0 | 0.0 | 1.5 | | |
| 17 | 6 | 19 | 02 | 02 | 97 | 15.1 | 72 | 21.1 | 7.2 | 4.0 | 11.0 | 11.0 | 11.6 | 11.5 | 10.8 | 10.1 | 00 | 0 | 0.0 | 6.2 | 0 | 0 | 0 | 0 | 0 | 1026.5 | 0.0 | 0.0 | 2.7 | | |
| 18 | 7 | 17 | 02 | 10 | 96 | 13.7 | 78 | 19.5 | 6.2 | 3.4 | 10.5 | 10.9 | 12.1 | 12.0 | 11.1 | 10.2 | 00 | 0 | 0.0 | 7.1 | 0 | 0 | 0 | 0 | 0 | 1021.5 | 0.0 | 0.0 | 3.3 | | |
| 19 | 5 | 15 | 02 | 05 | 96 | 18.3 | 62 | 24.6 | 7.7 | 4.1 | 10.7 | 10.9 | 11.9 | 11.9 | 11.3 | 10.3 | 00 | 0 | 0.0 | 10.6 | 0 | 0 | 0 | 0 | 0 | 1013.0 | 0.0 | 0.0 | 2.7 | | |
| 20 | 1 | 09 | 05 | 02 | 95 | 17.5 | 69 | 26.3 | 6.8 | 4.4 | 11.3 | 11.8 | 13.0 | 12.6 | 11.5 | 10.4 | 00 | 0 | 0.0 | 8.4 | 0 | 0 | 0 | 0 | 0 | 1016.0 | 0.0 | 0.0 | 3.5 | | |
| 21 | 2 | 00 | 00 | 02 | 95 | 19.1 | 64 | 25.9 | 10.1 | 6.9 | 12.8 | 13.1 | 14.0 | 13.2 | 12.0 | 10.6 | 00 | 0 | tr | 8.3 | 0 | 0 | 0 | 0 | 0 | 1014.5 | 0.0 | 0.0 | 4.6 | | |
| 22 | 1 | 03 | 02 | 05 | 96 | 20.1 | 58 | 26.4 | 8.3 | 5.0 | 13.0 | 13.2 | 14.1 | 13.2 | 12.3 | 10.8 | 00 | 0 | 0.0 | 12.5 | 0 | 0 | 0 | 0 | 0 | 1009.5 | 0.0 | 0.0 | 4.8 | | |
| 23 | 0 | 32 | 02 | 02 | 97 | 21.9 | 51 | 27.9 | 9.2 | 6.1 | 15.2 | 14.9 | 14.4 | 13.7 | 12.7 | 11.0 | 00 | 0 | tr | 12.4 | 0 | 0 | 0 | 1 | 0 | 1012.5 | 0.0 | 0.0 | 2.5 | | |
| 24 | 7 | 36 | 05 | 05 | 96 | 18.1 | 70 | 23.4 | 10.7 | 7.7 | 14.5 | 14.6 | 15.3 | 14.4 | 13.0 | 11.2 | 90 | 0 | 0.0 | 9.5 | 0 | 0 | 0 | 0 | 0 | 1018.0 | 0.0 | 0.0 | 2.3 | | |
| 25 | 0 | 36 | 05 | 02 | 97 | 17.7 | 45 | 22.1 | 9.4 | 6.8 | 13.8 | 14.0 | 15.0 | 14.5 | 13.3 | 11.5 | 90 | 0 | 0.0 | 13.1 | 0 | 0 | 0 | 0 | 0 | 1023.5 | 0.0 | 0.0 | 3.2 | | |
| 26 | 6 | 03 | 02 | 02 | 96 | 11.6 | 69 | 15.8 | 8.0 | 5.2 | 15.5 | 13.3 | 14.5 | 14.4 | 13.4 | 11.6 | 90 | 0 | 0.5 | 5.8 | 0 | 0 | 0 | 0 | 0 | 1026.5 | 0.2 | 0.0 | 1.0 | | |
| 27 | 7 | 03 | 09 | 02 | 97 | 12.8 | 62 | 17.1 | 8.3 | 7.6 | 12.2 | 12.7 | 13.9 | 13.9 | 13.2 | 11.8 | 10 | 0 | 0.0 | 9.7 | 0 | 0 | 0 | 0 | 0 | 1027.0 | 0.0 | 0.0 | 2.0 | | |
| 28 | 7 | 01 | 05 | 02 | 97 | 10.5 | 77 | 18.2 | 5.9 | 2.0 | 12.8 | 12.9 | 13.6 | 13.7 | 13.0 | 11.9 | 90 | 0 | 0.0 | 10.5 | 0 | 0 | 0 | 0 | 0 | 1022.5 | 0.0 | 0.0 | 2.5 | | |
| 29 | 7 | 02 | 09 | 02 | 97 | 14.0 | 78 | 19.9 | 9.7 | 8.0 | 13.3 | 13.1 | 13.5 | 13.5 | 12.8 | 11.9 | 90 | 0 | tr | 2.4 | 0 | 0 | 0 | 0 | 0 | 1015.5 | 0.0 | 0.0 | 2.2 | | |
| 30 | 0 | 05 | 13 | 02 | 97 | 18.0 | 61 | 22.3 | 11.3 | 8.0 | 14.2 | 13.8 | 13.9 | 13.5 | 12.8 | 11.9 | 90 | 0 | 0.0 | 12.8 | 0 | 0 | 0 | 0 | 0 | 1011.0 | 0.0 | 0.0 | 3.6 | | |
| Monthly means | | | | | | 14.3 | 70 | 20.1 | 7.6 | 4.7 | 11.2 | 11.3 | 12.1 | 12.0 | 11.2 | 10.2 | | | | | | | | | | | 1020.8 | | | | |
| Monthly totals | | | | | | | | | | | | | | | | | | | | | 4.2 | 217.0 | | | | | | 6.7 | 0.0 | 73.2 | |
| Highest values | | | | | | 21.9 | | 27.9 | 11.9 | 9.0 | 15.5 | 14.9 | 15.3 | 14.5 | 13.4 | 11.9 | | | | | 2.6 | 13.1 | | | | | | 4.6 | 0.0 | 4.8 | |
| Lowest values | | | | | | | | | | | | | | | | | | | | | | | | | | | | | | | |
| 1971-2000 monthly climatological averages | | | | | | | | | | | | | | | | | | | | | | | | | | | | | | | |
| | | | | | | 77 | 13.7 | 4.9 | 2.0 | 7.5 | 7.9 | 8.6 | 9.0 | 8.5 | 8.3 | | | | | | 47.2 | 143.1 | | | | | | 1015.4 | 50.4 | 6.6 | 44.2 |

Key
 DD: date
 07GMT observations
 N cloud cover (oktas, 9=obscured) dd wind direction (degrees/10)
 ff wind speed (knots)
 ww present weather code
 1 cloud decreasing 25 recent rain shower
 2 sky not changing 41 fog patches
 3 cloud increasing 61 continuous slight rain
 10 mist 80 light rain shower
 21 recent rain 81 moderate rain shower
 VV visibility (00-50 metres/100, 94 very poor, 95 poor, 96 moderate, 97 good)
 Soil temperatures are for 0700GMT beneath bare soil (5, 10, 20cm) or grass (30, 50, 100cm)

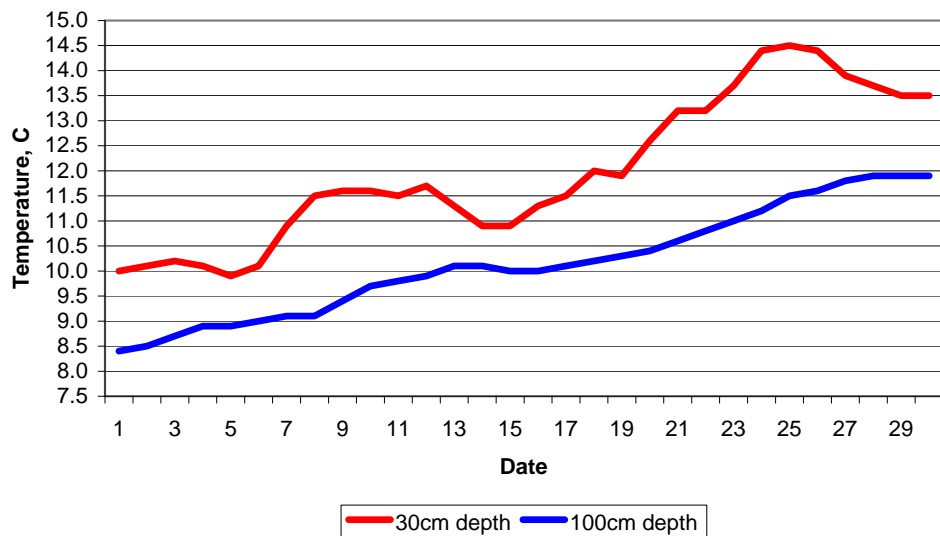
09GMT observations
 Temp temperature (degC) RH relative humidity (%)
 E state of ground (X1 slight snow, 10 moist, 20 wet, 90 cracked) SS snow depth (cm)
 Press air pressure (mb)

24 hour readings
 Max maximum temperature (degC) beginning 09GMT Min minimum temperature (degC) ending 09GMT
 Gmin grass minimum temperature (degC) ending 09GMT Rain precipitation beginning 09GMT
 Sun sunshine (hours) sunrise-sunset Rain hrs hours of rainfall (>0.1mm/h) 09-09GMT
 Fr. Hrs hours of air frost (00-24GMT) Pch Evap Piche evaporation (ml) beginning 09GMT

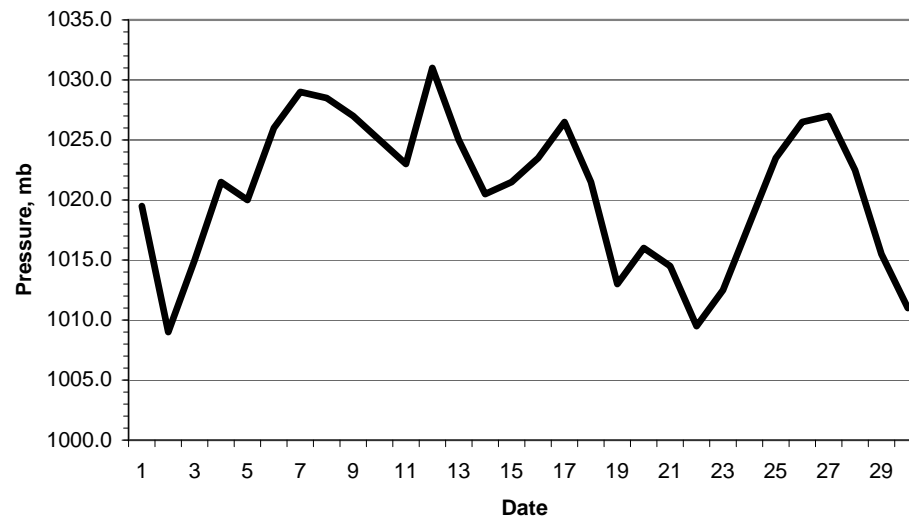
Days with
 S snow(5) or sleet(1) falling L 50% snow cover at 09GMT H hail or ice pellets
 T thunder heard G gale F fog at 09GMT

This information (and data for earlier months) is also available at <http://www.met.rdg.ac.uk/~brugge>

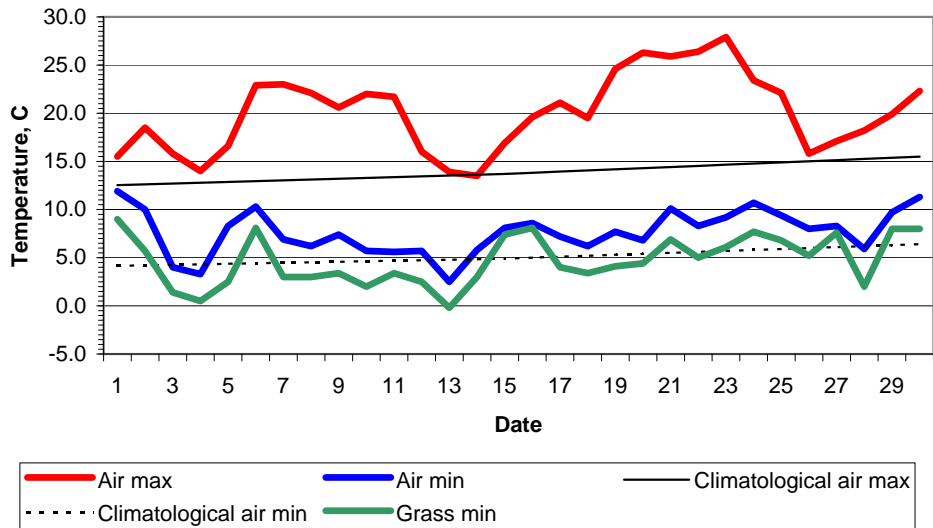
Daily soil temperatures, 0700GMT



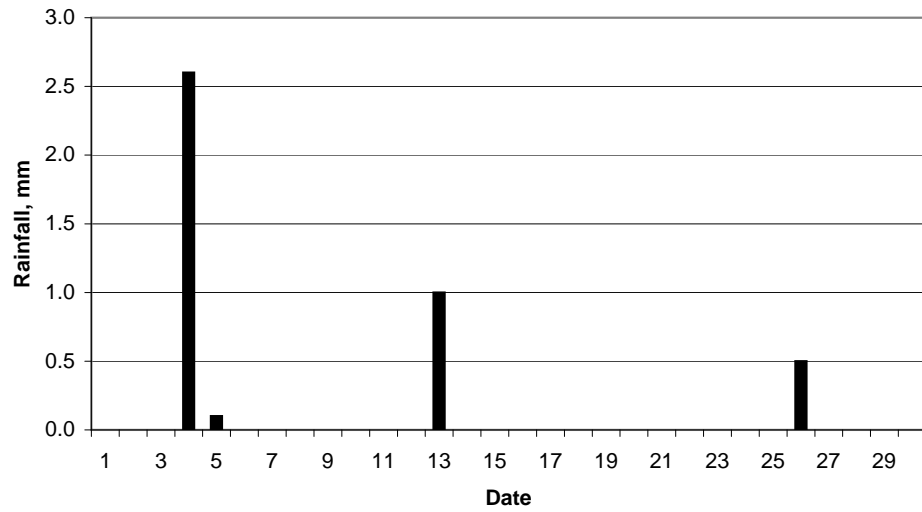
Mean sea level pressure, 0900GMT



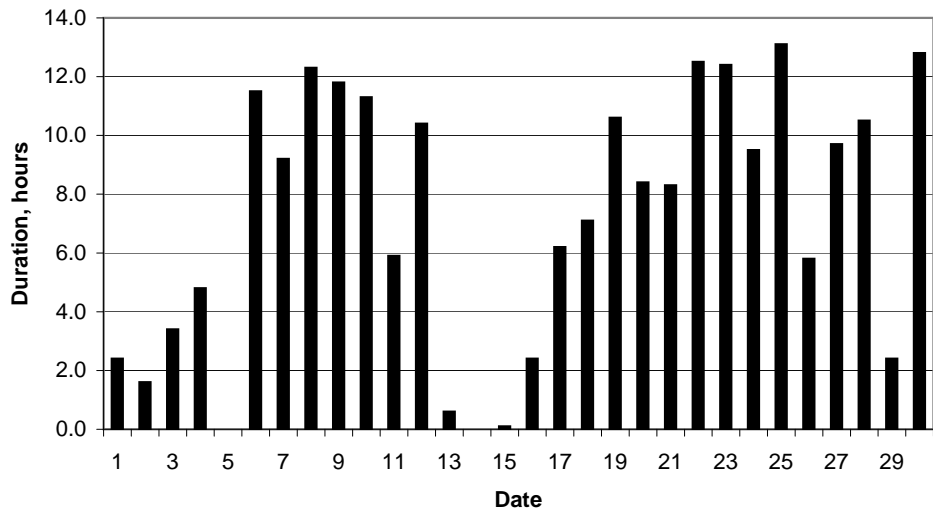
Daily temperature extremes



Daily rainfall



Daily sunshine



Daily evaporation

