

MAIDENHEAD METEOROLOGICAL OBSERVATIONS FOR APRIL 2009

DD	N	dd	ff	ww	VV	0900GMT Temp	RH	Temperature Max	Min	Gmin	Soil temperatures (depth in cm)						E	SS	Rain	Sun	S	L	H	T	G	F	Press	Rain hrs	Fr. hrs	Pch Evap			
01	0	04	02	02	97	13.5	48	17.0	1.7	-0.6	6.1	7.3	8.1	8.5	8.2	8.0	10	0	0.0	9.2	0	0	0	0	0	0	1022.0	0.0	0.0	2.3	Number of		
02	8	05	02	05	95	9.0	91	16.1	7.5	0.9	8.3	8.4	8.8	8.9	8.3	8.1	03	0	0.0	6.6	0	0	0	0	0	0	1021.0	0.0	0.0	1.6	days with		
03	8	36	05	10	95	6.4	95	13.7	5.3	3.2	8.0	8.3	9.0	9.0	8.6	8.1	03	0	0.2	5.6	0	0	0	0	0	0	1017.5	1.1	0.0	1.4	2009 normal		
04	7	21	05	21	97	12.0	82	18.2	6.4	4.3	9.3	8.9	9.1	9.1	8.6	8.2	10	0	0.0	9.5	0	0	0	0	0	0	1016.5	0.0	0.0	1.9	Snow/sleet falling		
05	6	05	02	02	97	11.5	58	15.4	5.6	1.7	8.3	8.4	9.4	9.6	8.8	8.4	03	0	0.0	3.8	0	0	0	0	0	0	1023.0	0.0	0.0	1.9	0 1.0		
06	6	04	05	02	97	14.7	61	17.2	7.7	3.0	8.9	9.1	9.8	9.7	9.1	8.5	03	0	tr	5.0	0	0	0	0	0	0	1010.0	0.0	0.0	1.4	50% snow cover 09GMT		
07	8	22	02	02	97	11.4	58	16.4	6.2	3.2	9.4	9.5	10.4	10.1	9.2	8.6	03	0	3.0	9.3	0	0	0	0	0	0	1007.0	4.2	0.0	2.4	0 0.0		
08	2	23	05	01	97	12.7	60	16.7	8.0	4.5	9.4	9.7	10.5	10.2	9.5	8.8	10	0	0.5	11.3	0	0	0	0	0	0	1004.5	1.0	0.0	2.4	Hail or ice pellets		
09	8	17	09	21	97	13.2	92	15.0	7.1	3.6	10.7	10.2	10.6	10.6	9.8	8.9	10	0	tr	5.0	0	0	0	0	0	0	1009.0	0.0	0.0	1.0	0 1.0		
10	8	20	05	60	97	11.4	94	12.2	8.8	5.6	10.0	10.0	10.5	10.6	9.8	9.0	10	0	4.2	0.0	0	0	0	0	0	0	1002.5	12.0	0.0	0.7	Thunder		
11	8	32	02	02	96	9.2	95	11.7	8.6	5.4	10.0	10.0	10.5	10.5	9.9	9.1	10	0	0.7	0.0	0	0	0	0	0	0	1007.0	4.2	0.0	0.5	1 0.8		
12	8	02	02	60	95	9.9	92	12.2	9.2	6.5	10.2	10.1	10.5	10.5	9.9	9.3	10	0	0.2	0.0	0	0	0	0	0	0	1014.0	0.4	0.0	0.4	Gale 0 0.0		
13	8	27	02	02	95	12.1	81	17.3	8.5	6.3	10.1	10.0	10.5	10.4	9.9	9.4	10	0	0.0	7.9	0	0	0	0	0	0	1011.0	0.0	0.0	1.8	0 0.0		
14	6	09	02	03	97	15.2	63	19.7	5.6	2.5	8.9	9.3	10.6	10.8	10.2	9.4	03	0	1.0	7.9	0	0	0	0	0	0	1008.0	0.9	0.0	2.2	Fog at 09GMT		
15	8	09	09	25	95	11.5	93	21.9	9.4	6.2	11.2	11.2	11.7	11.4	10.5	9.5	10	0	0.8	3.4	0	0	0	1	0	0	1005.0	1.7	0.0	2.5	0 0.1		
16	8	07	05	60	96	14.0	86	15.5	11.5	8.8	11.7	12.0	12.2	11.8	10.7	9.5	10	0	2.0	0.3	0	0	0	0	0	0	1006.0	4.8	0.0	1.2	Air frost		
17	8	08	02	60	96	9.4	93	11.3	8.7	8.4	10.8	11.0	11.6	11.7	10.7	9.8	10	0	2.0	0.0	0	0	0	0	0	0	1008.5	4.0	0.0	0.8	0 1.9		
18	2	09	09	02	97	9.7	72	15.8	5.5	3.4	8.8	9.2	10.5	11.0	10.7	9.9	10	0	0.0	11.0	0	0	0	0	0	0	1015.5	0.0	0.0	1.0	Ground frost		
19	2	07	09	02	97	11.4	70	16.9	5.0	0.6	8.3	8.8	10.2	11.0	10.7	10.0	10	0	0.0	10.4	0	0	0	0	0	0	1023.0	0.0	0.0	1.8	1 9.0		
20	6	02	02	02	97	13.7	58	20.2	4.8	1.2	9.3	9.5	10.7	11.3	10.7	10.0	10	0	0.0	9.9	0	0	0	0	0	0	1026.0	0.0	0.0	2.4	0.2mm precipitation		
21	1	33	02	02	96	16.5	60	22.0	4.2	2.3	9.1	9.7	11.0	11.7	10.9	10.1	03	0	0.0	13.0	0	0	0	0	0	0	1026.0	0.0	0.0	2.8	13 12.8		
22	5	27	02	02	97	15.9	57	20.4	5.0	1.9	9.6	10.1	11.3	11.2	11.2	10.2	03	0	0.0	12.4	0	0	0	0	0	0	1026.5	0.0	0.0	2.3	1.0mm precipitation		
23	6	22	02	02	96	14.7	65	20.2	6.2	4.1	10.7	11.1	12.0	12.2	11.4	10.3	03	0	0.0	8.0	0	0	0	0	0	0	1022.5	0.0	0.0	2.5	8 9.5		
24	6	14	02	03	96	16.6	62	19.6	9.0	4.6	10.9	11.2	12.2	12.4	11.5	10.4	03	0	1.4	10.1	0	0	0	0	0	0	1016.5	1.2	0.0	4.4	5.0mm precipitation		
25	7	18	05	21	97	10.8	55	16.4	9.8	6.8	11.9	12.1	12.8	12.6	11.7	10.6	10	0	0.0	8.8	0	0	0	0	0	0	1004.5	0.0	0.0	2.1	1 3.2		
26	0	09	02	02	97	14.9	54	18.1	3.5	2.0	9.5	9.9	11.5	12.4	11.7	10.7	03	0	1.7	13.0	0	0	0	0	0	0	1008.5	1.5	0.0	2.7	No sunshine		
27	8	18	05	60	97	9.4	93	9.8	4.1	2.2	10.3	10.8	11.9	12.4	11.8	10.8	10	0	9.2	0.0	0	0	0	0	0	0	995.5	8.3	0.0	0.2	5 3.1		
28	7	27	02	02	96	7.0	97	16.0	1.2	0.6	8.4	8.7	10.2	11.4	11.5	10.8	10	0	0.1	7.3	0	0	0	0	0	0	1000.0	0.1	0.0	1.3	A very warm, dry and sunny		
29	0	18	02	02	97	14.5	90	18.0	2.1	1.6	7.8	8.6	10.2	11.4	11.2	10.8	10	0	0.0	12.8	0	0	0	0	0	0	1008.5	0.0	0.0	2.5	month overall - but April		
30	8	15	05	03	97	13.8	67	15.8	8.8	4.5	11.2	11.2	11.7	11.8	11.1	10.7	10	0	0.0	0.3	0	0	0	0	0	0	1014.0	0.0	0.0	1.3	2007 was warmer. In 2009		
Monthly means						12.2	75	16.6	6.5	3.6	9.6	9.8	10.7	10.9	10.3	9.5											1012.7				the warmth was due to a		
Monthly totals																				27.0	201.8							45.4	0.0	53.7	lack of any very cold		
Highest values																																warmth, rather than being	
Lowest values						16.6		22.0	11.5	8.8	11.9	12.1	12.8	12.6	11.8	10.8					9.2	13.0							12.0	0.0	4.4	due to any very hot	
1971-2000 monthly climatological averages						6.4	48	9.8	1.2	-0.6	6.1	7.3	8.1	8.5	8.2	8.0																	conditions.
						77	13.7	4.9	2.0	7.5	7.9	8.6	9.0	8.5	8.3					47.2	143.1							1015.4	50.4	6.6	44.2		

Key

DD: date

07GMT observations

N	cloud cover (oktas, 9=obscured)	dd	wind direction (degrees/10)
ff	wind speed (knots)		
ww	present weather code		
1	cloud decreasing	25	recent rain shower
2	sky not changing	41	fog patches
3	cloud increasing	61	continuous slight rain
10	mist	80	light rain shower
21	recent rain	81	moderate rain shower

VV visibility (00-50 metres/100, 94 very poor, 95 poor, 96 moderate, 97 good)

Soil temperatures are for 0700GMT beneath bare soil (5, 10, 20cm) or grass (30, 50, 100cm)

09GMT observations

Temp	temperature (degC)	RH	relative humidity (%)
E	state of ground (X1 slight snow, 10 moist, 20 wet, 90 cracked)	SS	snow depth (cm)
Press	air pressure (mb)		

24 hour readings

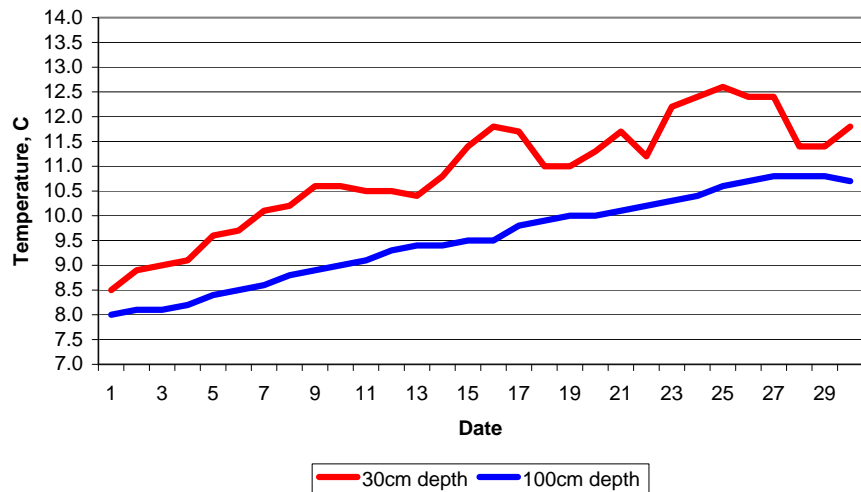
Max	maximum temperature (degC) beginning 09GMT	Min	minimum temperature (degC) ending 09GMT
Gmin	grass minimum temperature (degC) ending 09GMT	Rain	precipitation beginning 09GMT
Sun	sunshine (hours) sunrise-sunset	Rain hrs	hours of rainfall (>0.1mm/h) 09-09GMT
Fr. Hrs	hours of air frost (00-24GMT)	Pch Evap	Piche evaporation (ml) beginning 09GMT

Days with

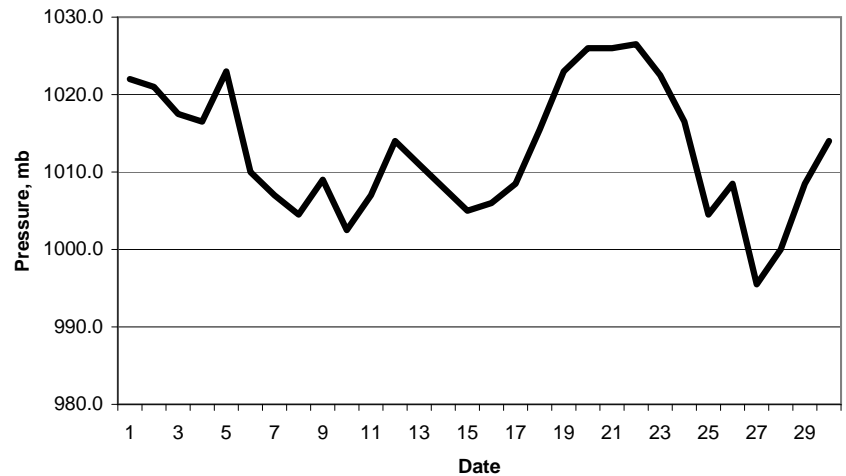
S	snow(5) or sleet(1) falling	L	50% snow cover at 09GMT	H	hail or ice pellets
T	thunder heard	G	gale	F	fog at 09GMT

This information (and data for earlier months) is also available at <http://www.met.rdg.ac.uk/~brugge>

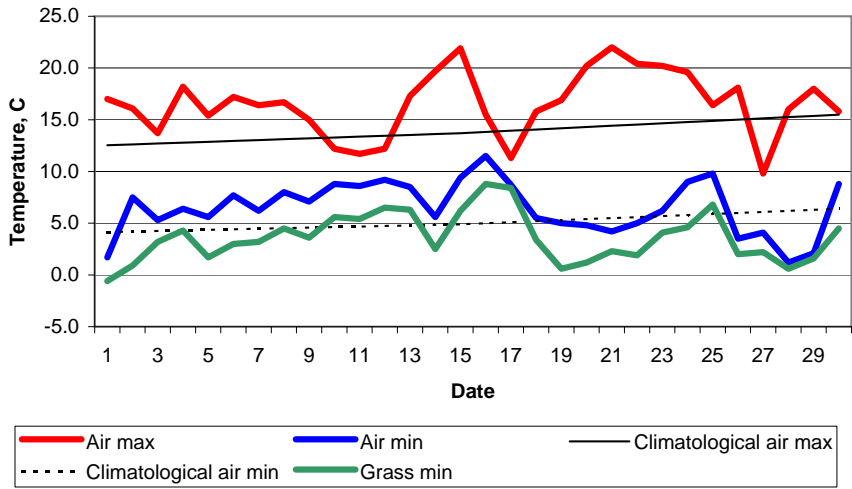
Daily soil temperatures, 0700GMT



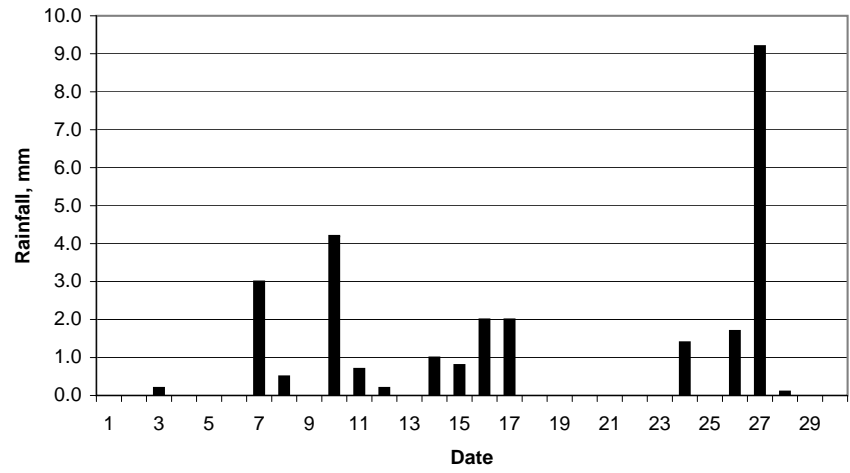
Mean sea level pressure, 0900GMT



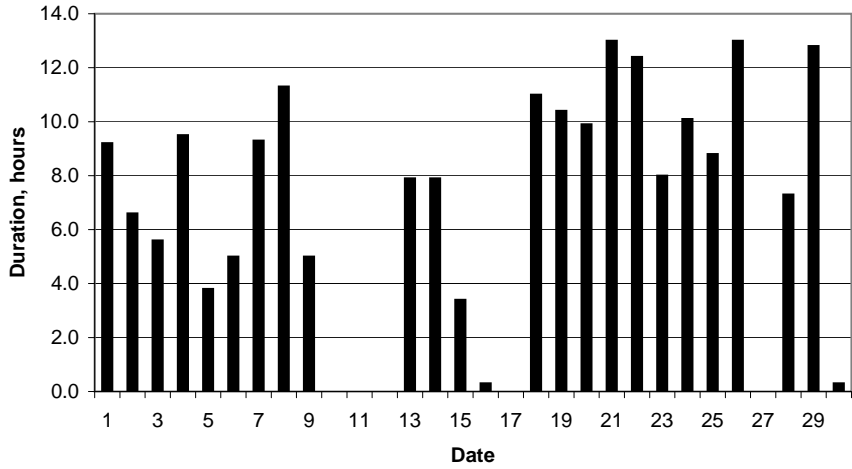
Daily temperature extremes



Daily rainfall



Daily sunshine



Daily evaporation

