

MAIDENHEAD METEOROLOGICAL OBSERVATIONS FOR APRIL 2007

DD	N	dd	ff	ww	VV	0900GMT		Temperature				Soil temperatures (depth in cm)						E	SS	Rain	Sun	S	L	H	T	G	F	Press	Rain	Fr.	Pch	
						Temp	RH	Max	Min	Gmin	5	10	20	30	50	100	hrs												hrs	Evap		
01	7	03	13	02	97	10.2	74	17.7	6.6	4.5	7.2	7.3	8.1	8.6	8.3	8.6	00	0	0.0	9.0	0	0	0	0	0	0	1029.0	0.0	0.0	3.9	Number of days with snow/sleet falling 2007 normal 0 1.0 50% snow cover 09GMT 0 0.0 Hail or ice pellets 0 1.0 Thunder 0 0.8 Gale 0 0.0 Fog at 09GMT 0 0.1 Air frost 0 1.9 Ground frost 1 9.0 0.2mm precipitation 3 12.8 1.0mm precipitation 1 9.5 5.0mm precipitation 0 3.2 No sunshine 2 3.1 Easily the sunniest and warmest April since before 1953 with daytime temperatures being 5.8C above average. The driest month since August 1995 when 1mm fell, and the same rainfall as in April 1984. Only three days with measureable rain leaving the ground dry and hard by the end of the month. Air pressure was unusually high throughout the month.	
02	0	06	02	02	96	11.7	64	19.3	6.4	3.0	7.3	7.3	8.6	9.0	8.5	8.6	00	0	0.0	11.8	0	0	0	0	0	1030.5	0.0	0.0	3.7			
03	7	03	09	03	97	7.1	90	10.1	5.1	2.4	7.2	7.8	9.0	9.3	8.7	8.7	00	0	tr	0.0	0	0	0	0	0	1028.0	0.0	0.0	1.8			
04	1	32	05	02	97	8.2	72	12.9	3.0	1.4	6.1	6.2	8.0	8.6	8.6	8.9	00	0	0.0	8.0	0	0	0	0	0	1027.5	0.0	0.0	2.4			
05	6	00	00	02	96	10.5	70	20.1	0.3	-0.8	6.0	6.2	8.0	8.5	8.4	8.9	00	0	0.0	12.2	0	0	0	0	0	1027.0	0.0	0.0	3.1			
06	7	00	00	02	97	13.6	63	18.8	4.0	2.0	7.2	7.5	8.8	9.0	8.6	8.8	00	0	0.0	12.2	0	0	0	0	0	1027.0	0.0	0.0	1.8			
07	6	32	02	05	96	11.9	80	17.0	3.7	2.5	6.5	7.0	9.0	9.3	8.7	8.9	00	0	0.0	7.0	0	0	0	0	0	1029.5	0.0	0.0	1.9			
08	4	27	02	02	97	11.7	65	20.2	1.5	1.2	5.7	6.0	10.0	9.4	9.0	9.0	90	0	0.0	11.2	0	0	0	0	0	1029.5	0.0	0.0	1.9			
09	3	26	02	02	97	13.8	75	20.0	5.0	3.0	5.8	6.0	10.5	9.9	9.4	9.1	90	0	0.0	7.5	0	0	0	0	0	1023.0	0.0	0.0	2.3			
10	7	27	02	02	97	15.0	80	20.7	11.0	8.9	11.4	11.3	11.4	10.8	9.9	9.3	90	0	0.0	6.2	0	0	0	0	0	1025.0	0.0	0.0	2.4			
11	8	27	02	02	97	12.9	74	19.1	6.3	3.5	10.1	10.6	11.8	11.2	10.3	9.5	90	0	0.0	2.9	0	0	0	0	0	1027.0	0.0	0.0	2.1			
12	3	36	02	02	97	13.1	77	19.6	7.7	4.7	10.0	10.4	11.4	11.1	10.5	9.6	90	0	0.0	9.9	0	0	0	0	0	1024.5	0.0	0.0	2.4			
13	8	03	02	02	95	12.8	75	19.3	7.4	4.9	10.7	11.0	11.9	11.5	10.7	9.9	90	0	0.0	2.5	0	0	0	0	0	1023.0	0.0	0.0	1.7			
14	7	36	02	02	96	14.0	78	24.0	7.0	4.6	10.6	11.1	11.9	11.6	10.7	10.0	90	0	0.0	12.1	0	0	0	0	0	1025.0	0.0	0.0	2.8			
15	0	35	02	02	97	16.0	69	25.6	7.5	4.9	11.2	11.8	13.0	12.4	11.2	10.1	90	0	0.0	12.6	0	0	0	0	0	1024.5	0.0	0.0	3.4			
16	1	04	02	02	94	17.5	70	24.1	10.3	6.6	12.6	12.8	13.7	13.0	11.7	10.4	90	0	0.0	9.7	0	0	0	0	0	1025.0	0.0	0.0	2.9			
17	8	33	05	02	96	13.4	81	18.5	10.8	9.5	13.5	13.8	14.1	13.3	12.2	10.6	90	0	0.0	8.7	0	0	0	0	0	1026.5	0.0	0.0	2.7			
18	4	03	05	02	97	13.0	54	17.0	4.6	1.9	10.6	11.3	12.8	13.0	12.2	10.9	90	0	0.0	11.2	0	0	0	0	0	1027.5	0.0	0.0	2.1			
19	2	04	02	02	97	13.8	64	22.1	3.0	0.8	9.5	10.1	12.0	12.4	12.0	11.0	90	0	0.0	13.5	0	0	0	0	0	1023.0	0.0	0.0	3.1			
20	7	06	05	02	97	12.7	71	18.0	8.0	3.6	11.6	11.9	12.8	12.9	12.1	11.1	90	0	0.0	8.4	0	0	0	0	0	1024.0	0.0	0.0	2.3			
21	7	05	02	22	97	14.0	56	20.5	4.3	1.9	10.7	11.1	12.5	12.7	12.2	11.2	90	0	0.0	11.9	0	0	0	0	0	1023.5	0.0	0.0	2.5			
22	6	14	02	02	97	15.7	54	22.2	4.3	1.8	10.6	11.1	12.6	12.9	12.2	11.3	90	0	0.2	6.3	0	0	0	0	0	1021.0	0.2	0.0	2.7			
23	8	22	09	61	95	12.4	96	17.5	9.0	5.4	12.3	12.4	13.4	13.1	12.3	11.4	90	0	1.1	0.0	0	0	0	0	0	1021.0	2.0	0.0	0.8			
24	8	22	02	02	96	14.6	86	20.5	12.0	10.0	13.2	13.2	13.6	13.1	12.4	11.4	10	0	0.0	2.0	0	0	0	0	0	1019.0	0.0	0.0	1.8			
25	8	18	02	02	97	16.2	84	19.1	13.4	9.9	13.8	13.8	14.0	13.5	12.7	11.5	90	0	tr	3.0	0	0	0	0	0	1014.5	0.0	0.0	2.0			
26	1	05	05	02	97	14.6	68	18.9	9.1	5.9	12.7	12.9	13.6	13.5	12.7	11.6	90	0	0.7	6.9	0	0	0	0	0	1022.0	0.5	0.0	1.9			
27	8	09	13	02	97	11.6	88	16.5	10.0	8.1	12.2	12.4	13.1	13.5	12.8	11.8	90	0	0.0	3.2	0	0	0	0	0	1025.0	0.0	0.0	1.3			
28	2	03	05	02	97	14.6	61	23.1	8.4	5.3	11.6	14.1	12.9	13.0	12.7	11.8	90	0	0.0	12.1	0	0	0	0	0	1025.5	0.0	0.0	3.5			
29	7	04	05	02	97	13.2	71	20.7	8.6	6.2	12.8	12.8	13.7	13.5	12.8	11.9	90	0	0.0	9.5	0	0	0	0	0	1022.5	0.0	0.0	2.0			
30	4	04	09	02	97	15.5	60	21.5	8.9	5.8	12.2	12.8	13.9	14.0	12.7	12.0	90	0	0.0	13.7	0	0	0	0	0	1016.5	0.0	0.0	3.7			
Monthly means						13.2	72	19.5	6.9	4.4	10.1	10.5	11.7	11.6	10.9	10.3											1024.6					
Monthly totals																				2.0	245.2							2.7	0.0	72.9		
Highest values						17.5		25.6	13.4	10.0	13.8	14.1	14.1	14.0	12.8	12.0				1.1	13.7							2.0	0.0	3.9		
Lowest values						7.1	54	10.1	0.3	-0.8	5.7	6.0	8.0	8.5	8.3	8.6																
1971-2000 monthly climatological averages						7.7	13.7	4.9	2.0	7.5	7.9	8.6	9.0	8.5	8.3						47.2	143.1						1015.4	50.4	6.6	44.2	

Key
 DD: date
 07GMT observations
 N cloud cover (oktas, 9=obscured) dd wind direction (degrees/10)
 ff wind speed (knots)
 ww present weather code
 1 cloud decreasing 25 recent rain shower
 2 sky not changing 41 fog patches
 3 cloud increasing 61 continuous slight rain
 10 mist 80 light rain shower
 21 recent rain 81 moderate rain shower

VV visibility (00-50 metres/100, 94 very poor, 95 poor, 96 moderate, 97 good)
 Soil temperatures are for 0700GMT beneath bare soil (5, 10, 20cm) or grass (30, 50, 100cm)

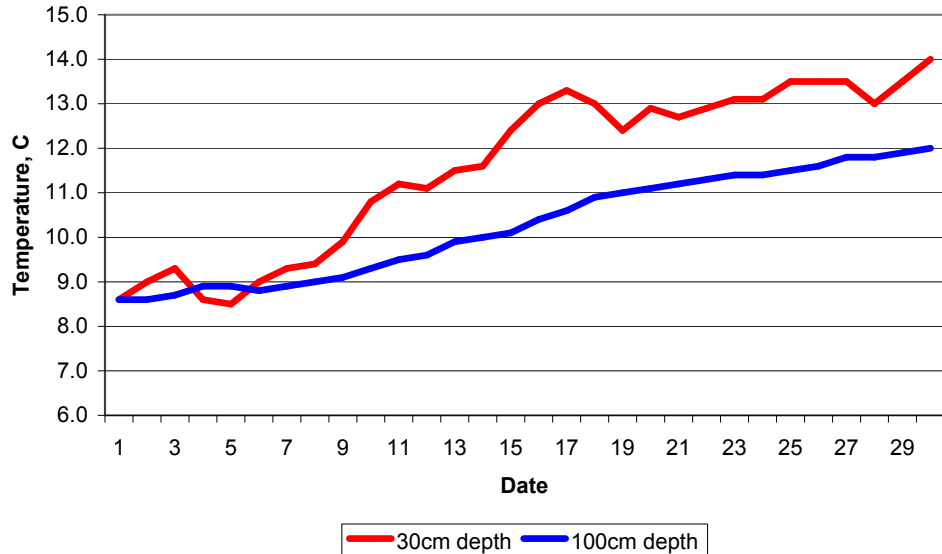
09GMT observations
 Temp temperature (degC) RH relative humidity (%)
 E state of ground (X1 slight snow, 10 moist, 20 wet, 90 cracked) SS snow depth (cm)
 Press air pressure (mb)

24 hour readings
 Max maximum temperature (degC) beginning 09GMT Min minimum temperature (degC) ending 09GMT
 Gmin grass minimum temperature (degC) ending 09GMT Rain precipitation beginning 09GMT
 Sun sunshine (hours) sunrise-sunset Rain hrs hours of rainfall (>0.1mm/h) 09-09GMT
 Fr. Hrs hours of air frost (00-24GMT) Pch Evap Piche evaporation (ml) beginning 09GMT

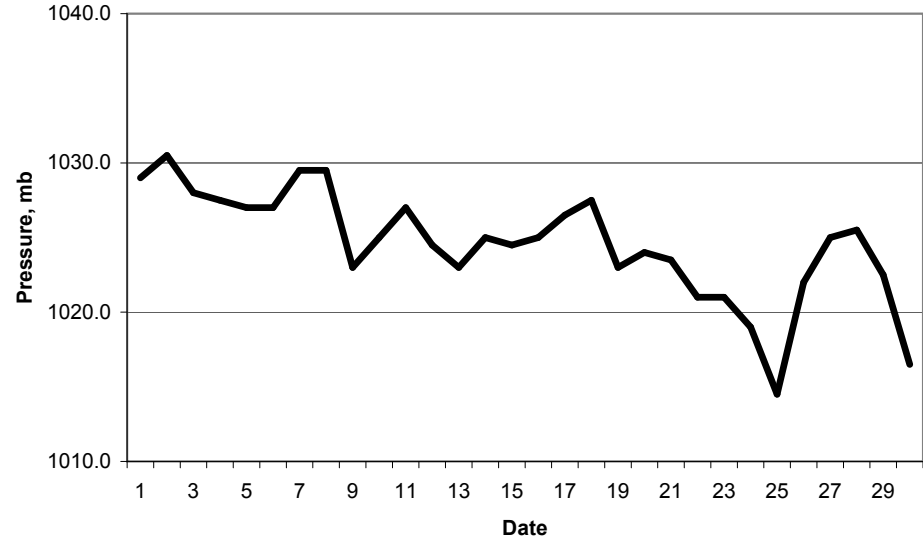
Days with
 S snow(5) or sleet(1) falling L 50% snow cover at 09GMT H hail or ice pellets
 T thunder heard G gale F fog at 09GMT

This information (and data for earlier months) is also available at <http://www.met.rdg.ac.uk/~brugge>

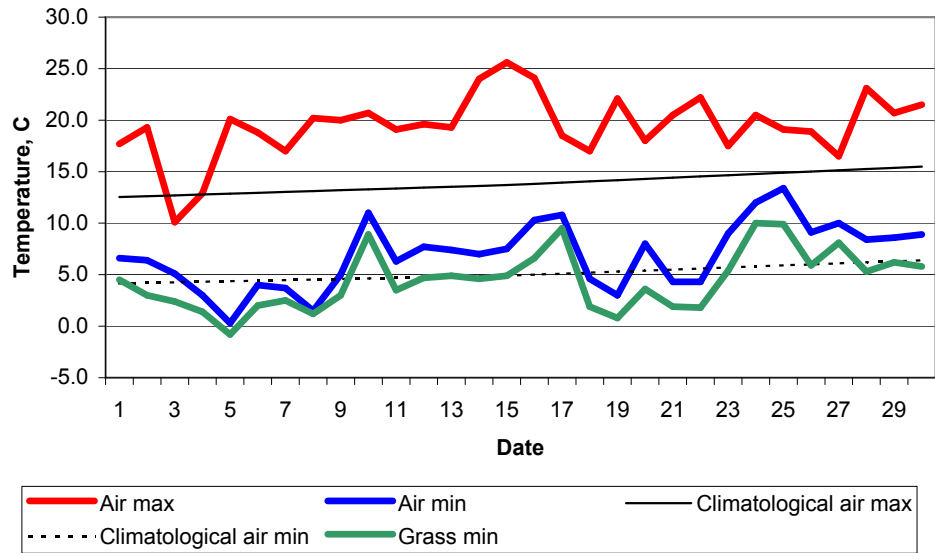
Daily soil temperatures, 0700GMT



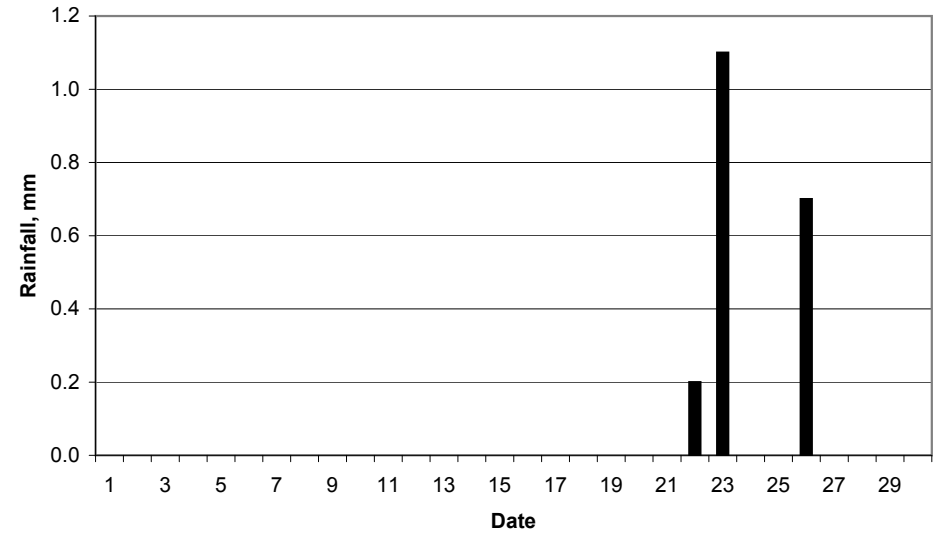
Mean sea level pressure, 0900GMT



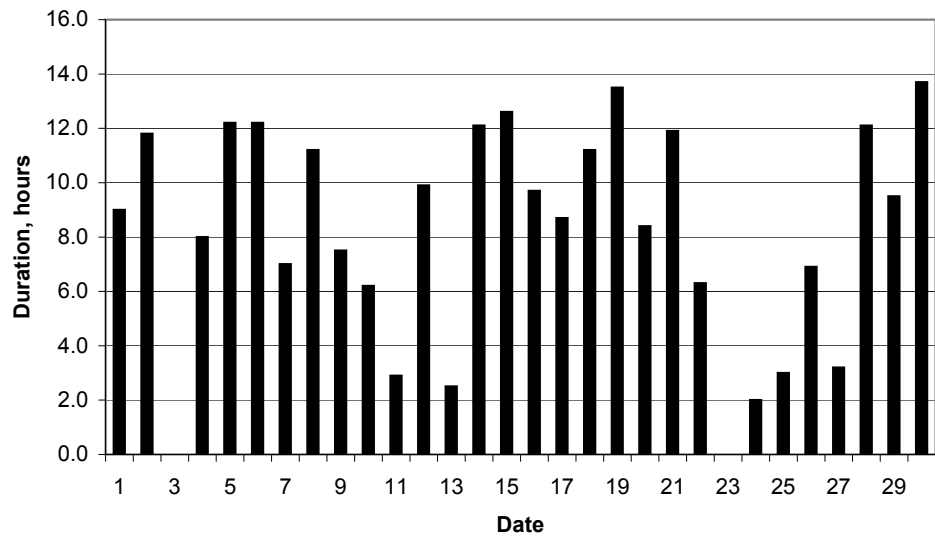
Daily temperature extremes



Daily rainfall



Daily sunshine



Daily evaporation

