

MAIDENHEAD METEOROLOGICAL OBSERVATIONS FOR APRIL 2005

		0900GMT		Temperature		Soil temperatures (depth in cm)																					Rain	Fr.	Pch									
DD	N	dd	ff	ww	VV	Temp	RH	Max	Min	Gmin	5	10	20	30	50	100	E	SS	Rain	Sun	S	L	H	T	G	F	Press	hrs	hrs	Evap								
01	8	13	05	10	94	9.0	95	15.6	8.1	6.1	9.1	5.1	9.4	9.4	9.2	8.8	10	0	0.1	5.6	0	0	0	0	0	0	0	1024.5	0.1	0.0	1.2	Number of						
02	7	15	02	03	97	12.9	67	19.5	9.0	5.3	9.8	9.4	9.9	9.9	9.3	8.9	10	0	0.0	8.1	0	0	0	0	0	0	0	1020.5	0.0	0.0	3.3	days with						
03	8	17	05	03	97	12.6	77	20.0	7.0	2.6	9.9	9.6	10.2	10.4	9.6	9.0	10	0	1.0	6.4	0	0	0	0	0	0	1018.0	2.1	0.0	2.3	2005 normal							
04	8	23	05	60	96	10.6	95	12.6	9.5	5.6	11.0	10.8	11.0	10.8	9.9	9.1	10	0	0.5	0.5	0	0	0	0	0	0	1019.5	1.8	0.0	0.8	Snow/sleet falling							
05	3	18	02	02	97	9.4	78	12.4	2.2	-1.5	6.5	7.2	9.4	10.2	9.8	9.3	10	0	0.5	4.0	0	0	0	0	0	0	1025.0	1.2	0.0	1.7	1 1.0							
06	8	19	13	60	97	9.3	88	14.6	7.5	0.3	8.4	9.0	9.8	10.1	9.7	9.4	10	0	1.8	5.4	0	0	0	0	0	0	1011.5	2.0	0.0	1.9	50% snow cover 09GMT							
07	8	25	13	02	97	9.8	69	12.9	6.6	3.2	7.2	7.6	9.0	9.8	9.5	9.4	10	0	2.5	7.1	0	0	0	0	0	0	1000.0	1.4	0.0	1.6	0 0.0							
08	6	36	13	25	97	4.1	87	8.0	4.1	1.6	6.2	6.8	8.7	9.5	9.5	9.3	10	0	1.6	0.3	5	0	0	0	0	0	1010.0	1.2	0.0	1.6	Hail or ice pellets							
09	0	28	02	02	97	6.7	75	11.9	-1.4	-5.0	2.9	3.8	6.5	8.5	8.9	9.3	10	0	0.0	6.9	0	0	0	0	0	0	1026.0	0.0	4.6	1.8	0 1.0							
10	7	27	05	02	97	9.8	77	16.9	5.6	-2.1	6.8	6.8	8.0	8.6	8.7	9.1	10	0	tr	8.5	0	0	0	0	0	0	1025.5	0.0	0.0	1.8	Thunder							
11	6	24	02	02	97	12.9	71	18.8	4.4	0.4	7.3	7.9	9.3	9.5	9.0	9.1	10	0	0.0	8.1	0	0	0	0	0	0	1030.0	0.0	0.0	2.1	2 0.8							
12	2	25	02	02	97	10.9	86	15.8	4.9	0.6	8.4	8.9	10.1	10.2	9.3	9.1	10	0	2.6	0.1	0	0	0	0	0	0	1023.5	3.5	0.0	1.1	Gale							
13	8	27	05	61	96	7.9	94	13.6	7.9	3.2	9.0	9.4	10.2	10.2	9.7	9.2	10	0	0.3	0.6	0	0	0	0	0	0	1009.5	0.9	0.0	0.9	0 0.0							
14	7	16	02	02	97	8.4	83	13.1	7.3	2.7	8.6	8.9	10.0	10.1	9.5	9.4	10	0	1.1	1.7	0	0	0	0	0	0	1001.0	1.4	0.0	0.9	Fog at 09GMT							
15	7	31	02	41	05	5.9	94	8.9	2.3	-0.2	6.3	7.1	8.9	9.9	9.4	9.4	10	0	1.7	0.0	0	0	0	0	0	0	1004.5	2.0	0.0	0.2	0 0.1							
16	7	12	02	02	95	7.0	87	10.9	1.5	-0.5	6.2	6.4	8.1	9.2	9.2	9.4	10	0	0.0	0.1	0	0	0	0	0	0	1009.5	0.0	0.0	1.0	Air frost							
17	2	24	05	02	97	10.6	66	15.6	-0.3	-1.8	5.1	5.6	7.1	9.0	8.8	9.4	10	0	4.5	7.5	0	0	0	0	0	0	1006.5	4.0	2.1	2.4	2 1.9							
18	8	15	09	21	96	10.9	91	15.4	8.0	6.5	9.9	9.9	10.0	9.9	9.2	9.3	10	0	1.7	9.2	0	0	0	0	0	0	995.0	0.8	0.0	1.6	Ground frost							
19	8	09	05	60	95	10.5	80	16.1	5.7	2.4	7.9	8.4	9.5	10.1	9.6	9.3	10	0	3.6	5.2	0	0	0	1	0	0	1004.5	2.0	0.0	1.6	6 9.0							
20	7	05	02	02	94	6.5	80	11.0	3.4	1.6	7.3	7.8	9.2	10.2	9.6	9.4	10	0	0.0	0.1	0	0	0	0	0	0	1013.0	0.0	0.0	0.8	0.2mm precipitation							
21	8	09	02	02	96	8.2	91	16.9	6.2	3.5	8.4	8.4	9.4	10.0	9.5	9.5	10	0	0.0	8.7	0	0	0	0	0	0	1021.0	0.0	0.0	2.8	19 12.8							
22	3	12	02	02	97	11.4	68	18.0	2.7	0.1	6.9	7.2	9.1	10.0	9.5	9.5	10	0	0.0	8.7	0	0	0	0	0	0	1015.5	0.0	0.0	3.5	1.0mm precipitation							
23	8	10	02	02	97	11.1	91	14.7	8.9	4.0	9.6	9.6	10.1	10.4	9.7	9.5	10	0	0.4	0.0	0	0	0	0	0	0	1010.5	2.0	0.0	1.3	14 9.5							
24	0	05	05	02	97	11.5	74	16.0	5.8	4.9	8.9	8.9	10.0	10.4	9.8	9.6	10	0	8.9	3.2	0	0	0	0	0	0	1010.5	6.8	0.0	2.0	5.0mm precipitation							
25	8	36	05	61	94	8.8	95	12.1	8.7	8.4	10.1	10.4	11.0	10.9	10.2	9.6	10	0	1.8	0.0	0	0	0	0	0	0	1008.0	2.9	0.0	0.3	3 3.2							
26	8	16	02	02	95	11.8	91	15.0	6.3	4.3	9.6	9.7	10.4	10.5	10.1	9.7	10	0	8.0	4.3	0	0	0	0	0	0	1010.0	4.5	0.0	0.8	No sunshine							
27	5	21	02	02	95	13.2	74	13.9	5.9	3.5	8.4	8.8	10.1	10.5	10.0	9.9	10	0	7.7	7.8	0	0	0	1	0	0	1014.0	2.0	0.0	1.1	4 3.1							
28	8	14	02	02	97	12.6	61	14.4	10.1	6.7	10.1	10.0	10.5	10.0	10.2	9.9	10	0	0.3	0.0	0	0	0	0	0	0	1015.5	0.3	0.0	1.1								
29	5	18	02	02	96	14.4	77	20.0	9.4	5.9	10.6	10.7	11.2	11.0	10.3	9.9	10	0	0.1	7.5	0	0	0	0	0	0	1019.0	0.1	0.0	1.9	Slightly duller and wetter							
30	8	20	02	02	96	15.0	96	22.1	13.8	10.0	13.4	13.3	13.0	12.4	10.9	10.0	10	0	tr	3.3	0	0	0	0	0	0	1016.0	0.0	0.0	1.4	than average with							
Monthly means						10.1	82	14.9	6.0	2.7	8.3	8.4	9.6	10.1	9.6	9.4												1013.9				frequent falls of small						
Monthly totals																	50.7	128.9						43.0	6.7	46.8	amounts of rain. A warm											
Highest values						15.0	22.1	13.8	10.0	13.4	13.3	13.0	12.4	10.9	10.0												8.9	9.2				start and end to the						
Lowest values						4.1	61	8.0	-1.4	-5.0	2.9	3.8	6.5	8.5	8.7	8.8															month; 13.8C on the							
1971-2000 monthly climatological averages						77	13.7	4.9	2.0	7.5	7.9	8.6	9.0	8.5	8.3												47.2	143.1						1015.4	50.4	6.6	44.2	30th was the highest
																													April minimum									
																													temperature since									
																													1971.Less frost than									
																													usual.									

PTO

Key

DD: date

07GMT observations

N	cloud cover (oktas, 9=obscured)	dd	wind direction (degrees/10)
ff	wind speed (knots)		
ww	present weather code		
2	sky not changing	25	recent rain shower
3	cloud increasing	41	fog patches
10	mist	60	intermittent slight rain
21	recent rain	61	continuous slight rain
VV	visibility (00-50 metres/100, 94 very poor, 95 poor, 96 moderate, 97 good)		

Soil temperatures are for 0700GMT beneath bare soil (5, 10, 20cm) or grass (30, 50, 100cm)

09GMT observations

Temp	temperature (degC)	RH	relative humidity (%)
E	state of ground (X1 slight snow, 10 moist, 20 wet, 90 cracked)	SS	snow depth (cm)
Press	air pressure (mb)		

24 hour readings

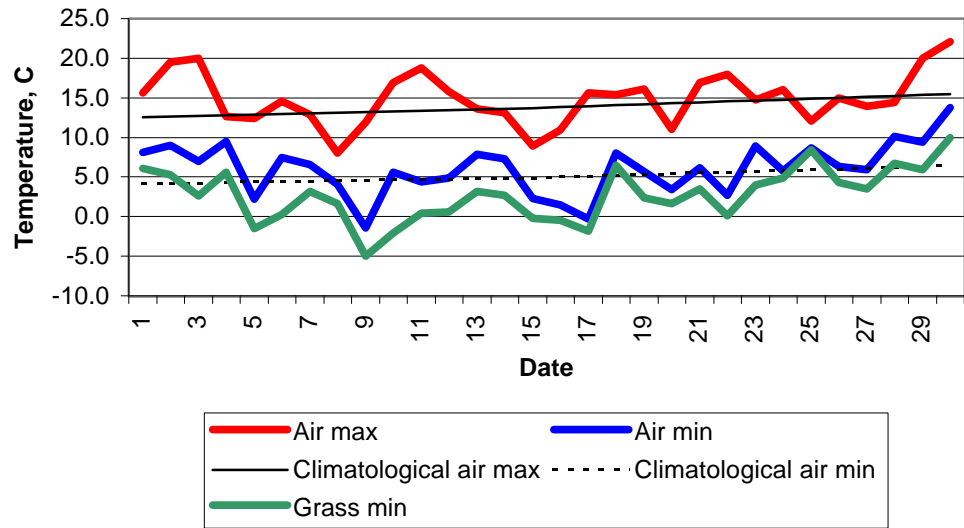
Max	maximum temperature (degC) beginning 09GMT	Min	minimum temperature (degC) ending 09GMT
Gmin	grass minimum temperature (degC) ending 09GMT	Rain	precipitation beginning 09GMT
Sun	sunshine (hours) sunrise-sunset	Rain hrs	hours of rainfall (>0.1mm/h) 09-09GMT
Fr. Hrs	hours of air frost (00-24GMT)	Pch Evap	Piche evaporation (ml) beginning 09GMT

Days with

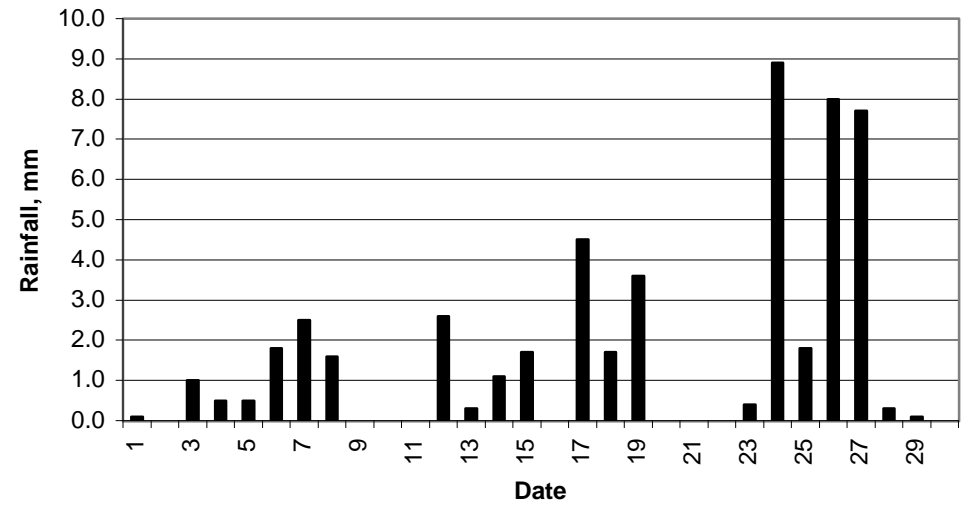
S	snow(5) or sleet(1) falling	L	50% snow cover at 09GMT	H	hail or ice pellets
T	thunder heard	G	gale	F	fog at 09GMT

This information (and data for earlier months) is also available at
<http://www.met.rdg.a.uk/~brugge>

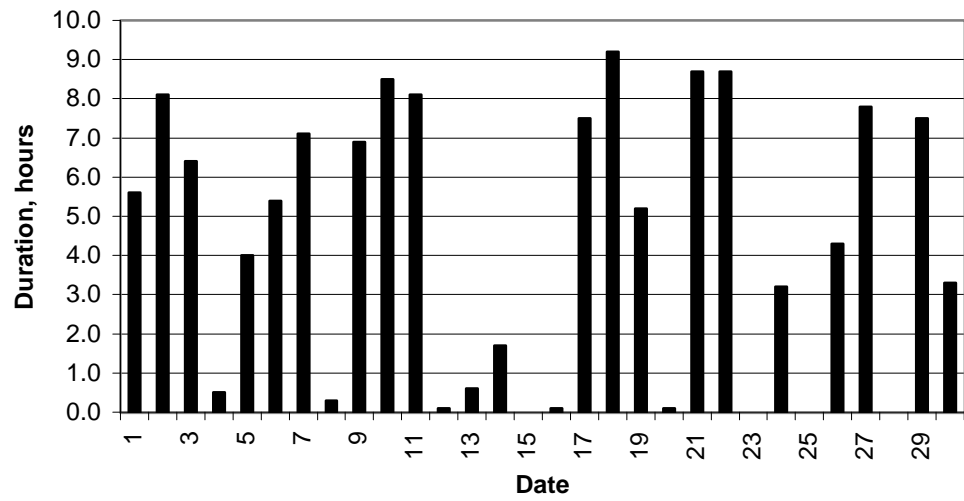
Daily temperature extremes



Daily rainfall



Daily sunshine



Daily evaporation

