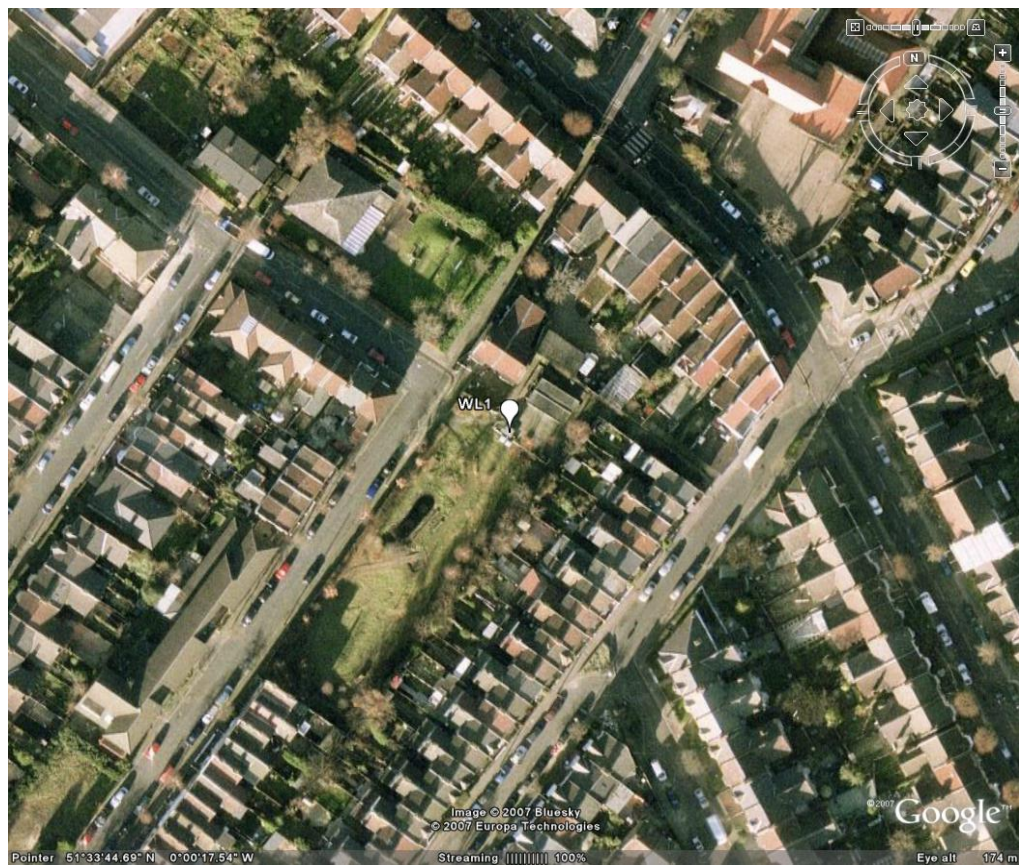


Site name	Site code	Date of	OS X	OS Y	Latitude	Longitude	UTM
Waltham Forest 1	WL1	27/07/2007	538391	186724	51 33' 45N	0 00' 17W	30U 708729.35E, 5691398.53N

Satellite pictures

Date:
12/05/2006 -
10/09/2006

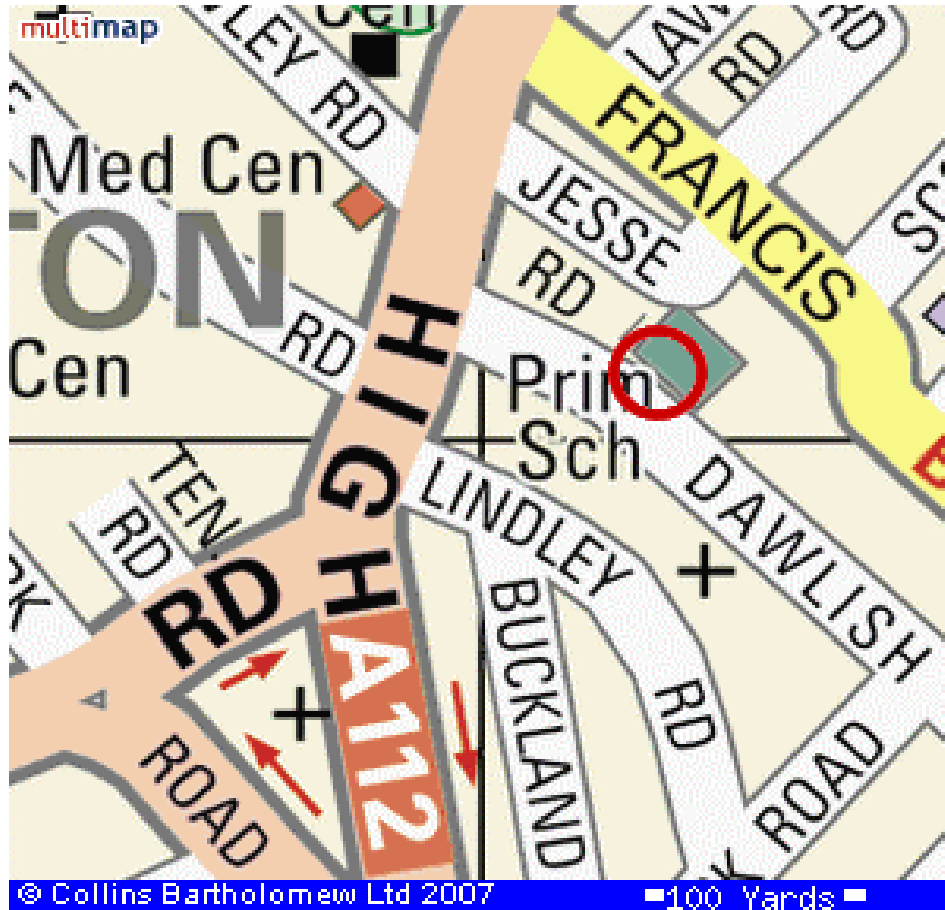
Local scale
(100 m radius)



Meso Scale
(1km radius)



Street maps



Local scale
(100 m radius)



Meso Scale
(1 km radius)

Site classification	LAQN Classification	Station Type	Urban climate zone	Meso (1 km radius)	Local (100m radius)	Micro (30 m radius)
	Urban background	Urban Meteorological		3	3	3

% Land cover		100 m	1 km	Main Land use	Direction	Land use (MAJOR / minor)
	Vegetated	23.2	50.49		N	RESIDENTIAL
	Built over	50.5	15.37		E	RESIDENTIAL
	Water	0	0		S	RESIDENTIAL/ industrial
	Road	26.4	34.14		W	RESIDENTIAL/ industrial

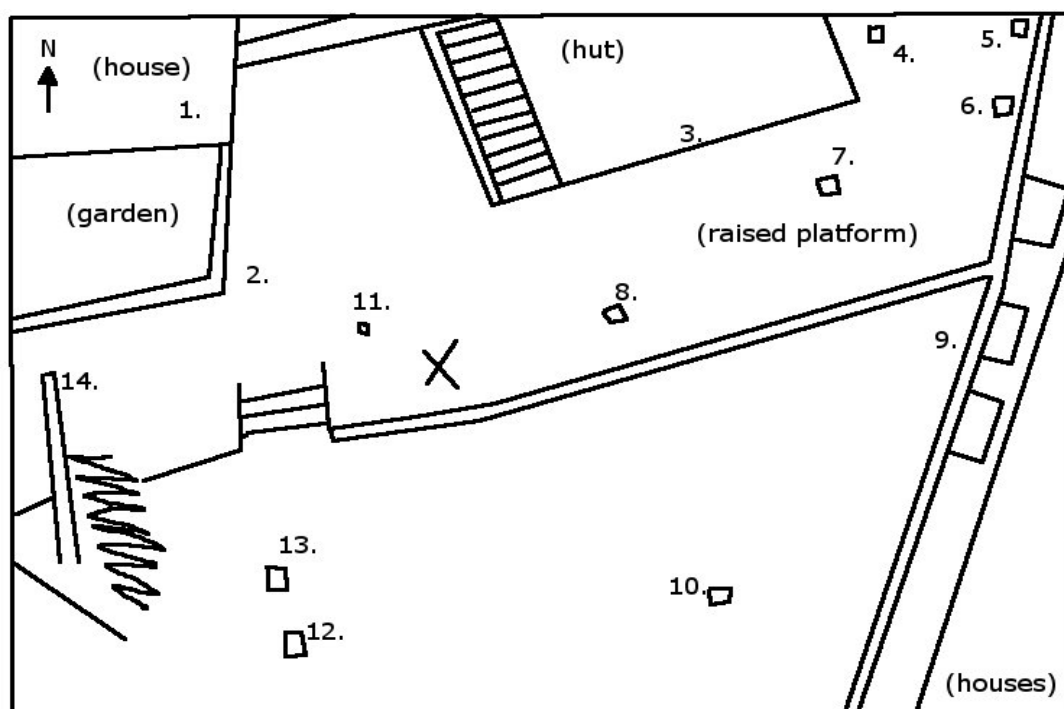
Site description	Meso (1 km radius)	Local (100m radius)	Micro (30 m radius)
	Highly developed; lots of houses, small gardens. Long roads.	Urban housing, gardens are generally quite small. Two large roads running through area.	Site is on a different level to the ground level of the road to the West. It is 1 metre higher. (This has been incorporated into height calculations.)

Station photo








Plan view
diagram
(30 m radius)

KEY
□ : Tree
X : Station

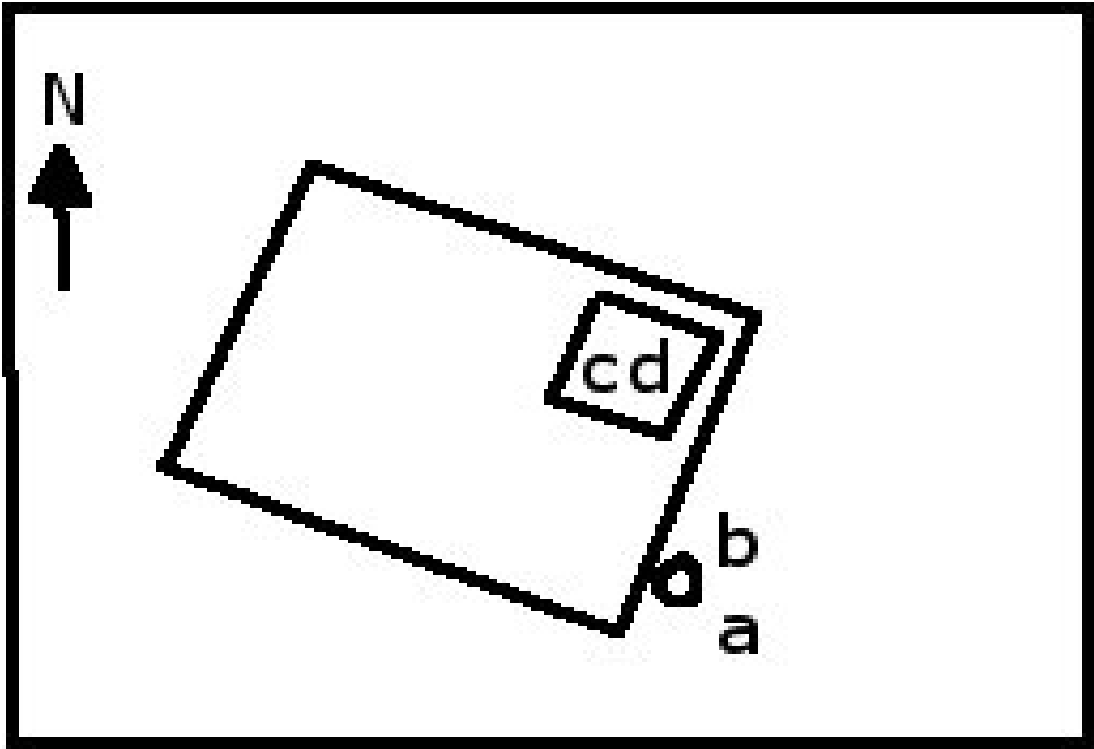


Site obstacles

Sketch key	Type	Detail	Wall material	Roof material	View from station
1	House	N/a	Yellow and red brick	Red slate	
2	Wall	N/a	Brick painted white	N/a	
3	Hut	N/a	Green wooden board	Plastic weather covering	
4	Tree	Deciduous	N/a	N/a	
5	Tree	Deciduous	N/a	N/a	
6	Tree	Deciduous	N/a	N/a	
7	Tree	Deciduous	N/a	N/a	
8	Tree	Deciduous	N/a	N/a	
9	Wall	N/a	Cement/wood	N/a	

10	Tree	Deciduo us	N/a	N/a	
11	Telephone pole	Wooden pole	N/a	N/a	
12	Tree	Deciduo us	N/a	N/a	
13	Trees	Deciduo us/ shaped	N/a	N/a	
14	Wall	N/a	Brick covered in foliage	N/a	

Instrument
diagram
(Plan view)



Instruments

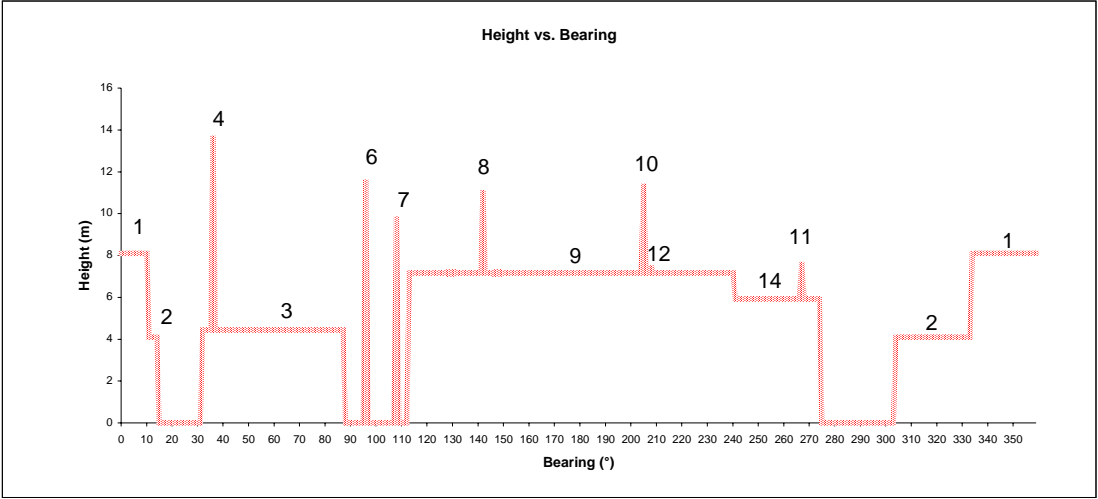
Sketch key	Name	Variable	True height (m)	Concerns
a	Young wind vane	Wind speed	7.79	Next to tall tree (8)
b	Young wind vane	Wind direction	7.79	N/a
c	Teom	Air temperature	3.47	N/a
d	Teom	Air quality*	3.86	N/a
e	Pressure Sensor	Barometric pressure	Indoor	N/a

* Measuring Nox, Ozone 2, PM 10.

Instrument
images



Graphs
 Height vs.
 bearing



**Other
 influences**

Heat sources

Bearing from site (°)	Source	Location	Detail
334 - 10	House (1)	North of site	Unlikely to have great effect
32 - 87	Hut (3)	Northeast of site	Possible heat source, unlikely to have great effect
N/a	Air conditioning unit	East wall of cabin	N/a

Traffic

Quiet road/area	Seasonal features	Summer: trees in full leaf	Temporary fixtures	N/a
-----------------	-------------------	----------------------------	--------------------	-----

Task	Initial
Who visited the site	RW, KR
Who filed the report	RE
Who produced the plots	KR, RE

*N.B.
 values
 given to
 3 s.f.*