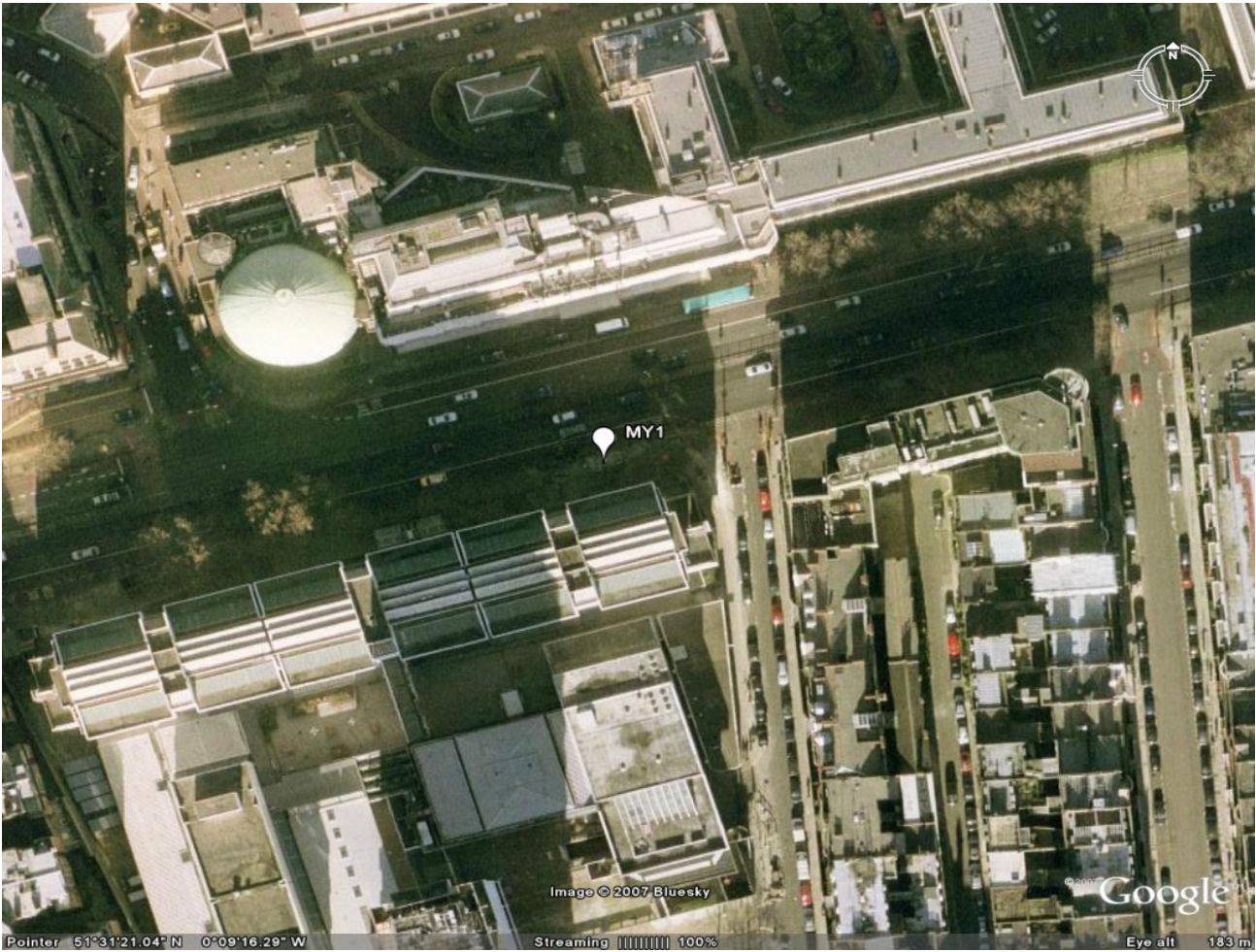


Site name	Site code	Date of visit	OS X	OS Y	Latitude	Longitude	UTM
Marylebone 1	MY1	01/08/2007	528137	182012	51 31' 21N	0 09' 16W	30U 697402.00E, 5711770.00N

Satellite pictures

Date:
28/08/2006 -
29/10/2006

Local scale
(100 m radius)



Meso Scale
(1km radius)

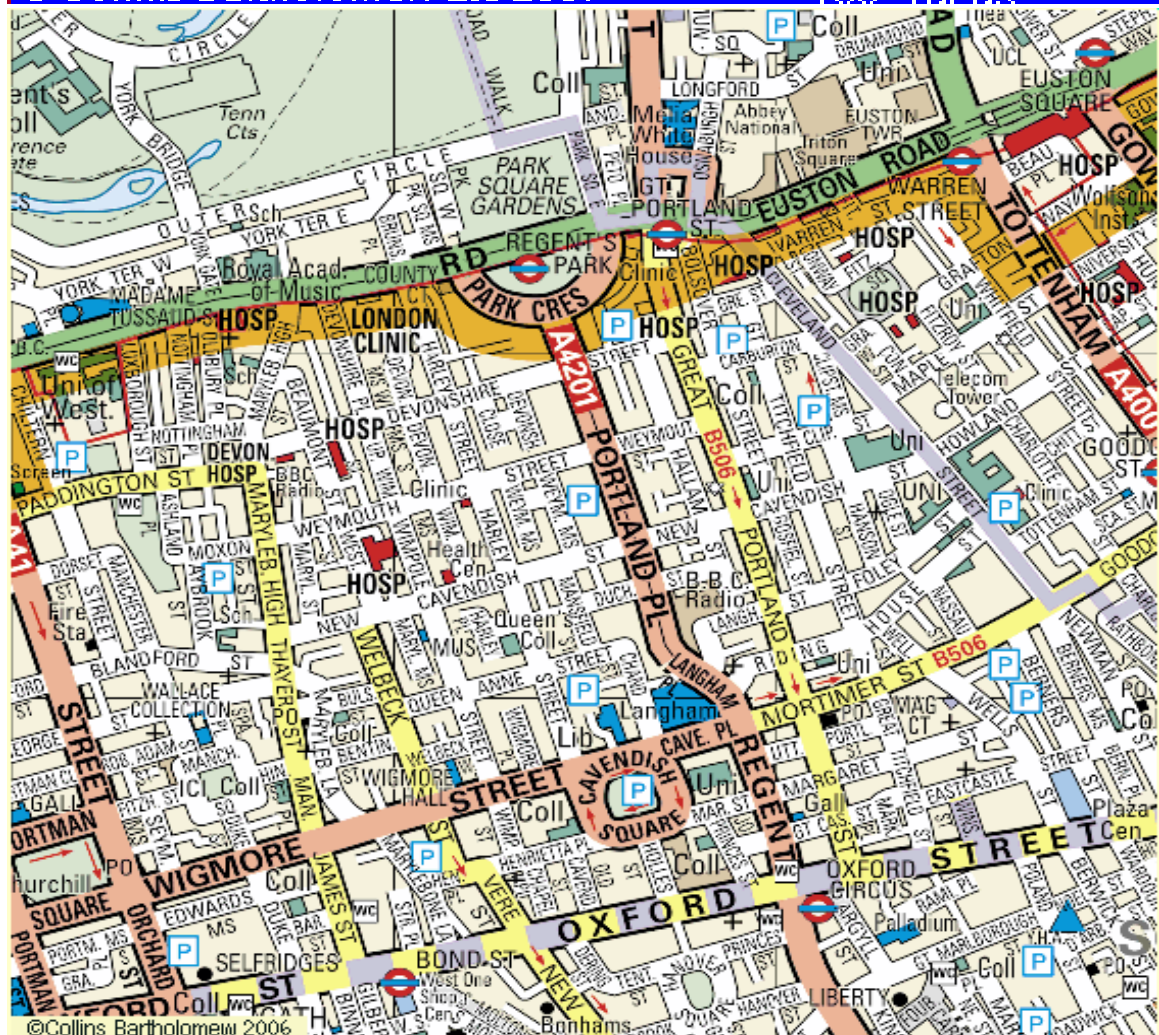


Street maps

Local scale
(100 m radius)



Meso Scale
(1km radius)



Site classification	LAQN Classification	Station Type
	Curbside	Urban Meteorological

Urban climate zone

Meso (1 km radius)	Local (100 m radius)	Micro (30 m radius)
2	2	2

% Land cover

	100 m	1 km
Vegetated	2.18	34.77
Built over	71.41	41.34
Water	0	2.47
Road	26.41	21.42

Main Land use

Direction	Land use (MAJOR/minor)
N	PARK/ commercial
E	PARK/ residential
S	COMMERCIAL/ residential
W	COMMERCIAL/ residential

Site description

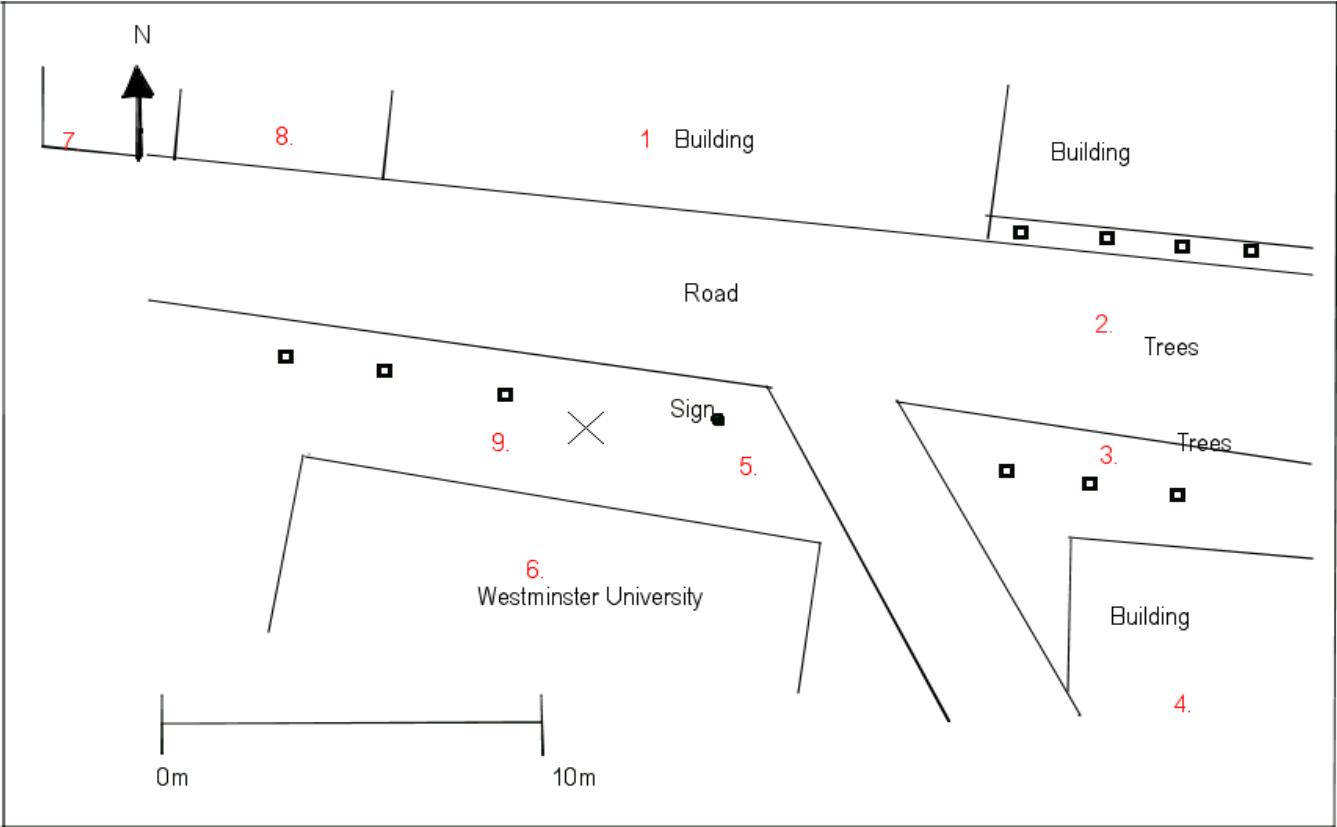
Meso (1 km radius)	Local (100 m radius)	Micro (30 m radius)
Highly commercialised area with heavy traffic and high numbers of visitors. Park to te North with large open spaces.	Heavy traffic and high numbers of pedestrians, throughput the day especially during peak periods.	Tourist area with lots of cars and coach traffic. Coaches stationary near site ofr long periods of time.

Station photo



Plan view
diagram
(30 m radius)

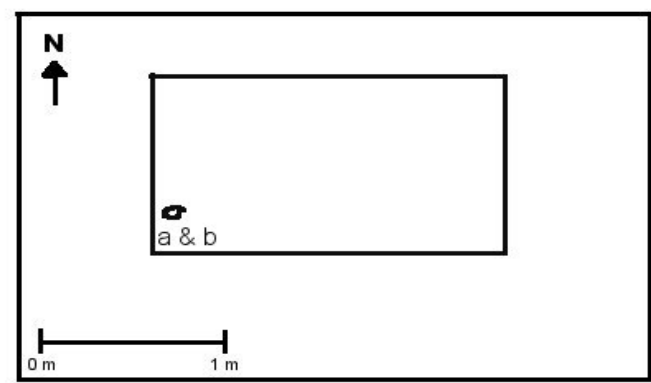
KEY
□ : Tree
X : Station



Site obstacles

Sketch key	Type	Detail	Wall material	Roof material	View from station
1	Building	Tourist	White painted brick	Light Concrete	
2	Trees	Deciduous	N/a	N/a	
3	Trees	Deciduous	N/a	N/a	
4	Building	Bank	Brown brick	Grey Concrete	
5	Sign	Road	Metal	N/a	
6	Building	University	Glass, white concrete	Grey Concrete	
7	Building	Commercial	Light stone	Tarmac weather covering	
8	Building	Planetarium	Light stone	Green oxidised copper	
9	Trees	Deciduous	N/a	N/a	

Instrument
diagram
(Plan view)



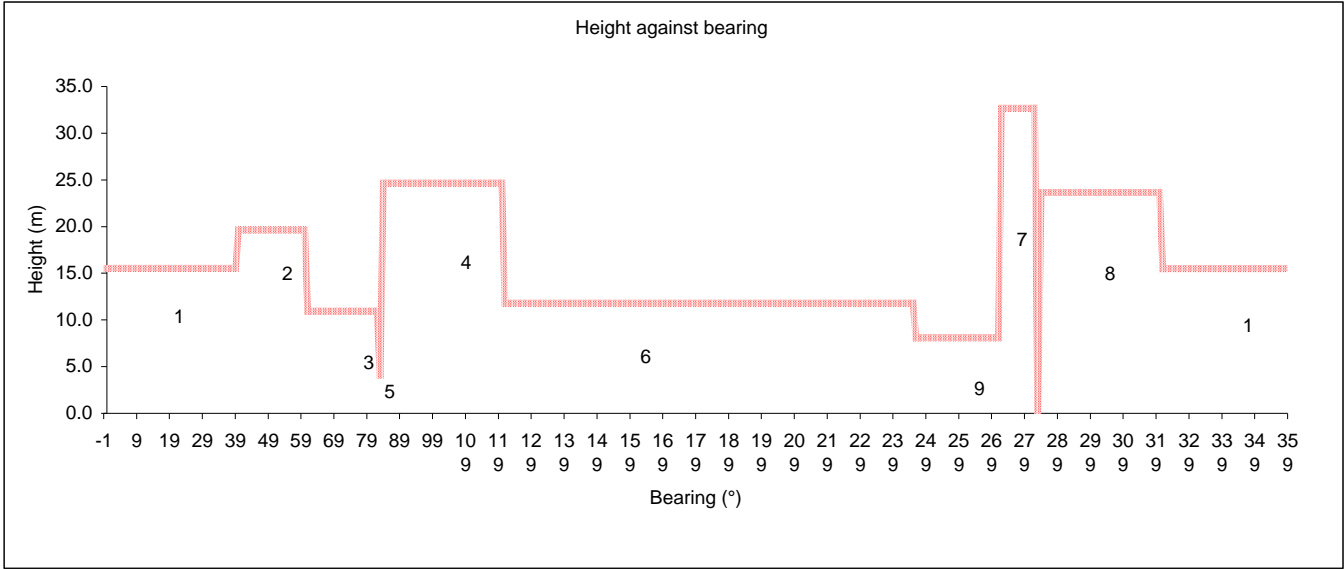
Instruments

Sketch key	Name	Variable	True height (m)	Concerns
a	3D wind sonic	wind velocity	4.7	Very close to a sign which was 4.1 m tall and therefore it is likely to be affected by this
b	relative huidity gauge	Humidity	3	N/a
c	TEOM	Air Quality	3	N/a
d	Cabin	N/a	2.65	N/a

Instrument
image



Graphs
Height vs.
bearing



Other
influences

Heat sources

Bearing from site (°)	Source	Location	Detail
N/a	Air con	On the cabin	May have a heating effect.
121 - 245	Windows	6	Reflect heat radiation onto the
321 - 39	White walls	1	Reflect heat

Traffic

Dense	Seasonal features	Summer	Temporary fixtures	N/a
-------	-------------------	--------	--------------------	-----

Task	Initial
Who visited the site	RW, KR&MP
Who filed the report	RW, RE
Who produced the plots	RW.

N.B. values
given to 3
s.f.