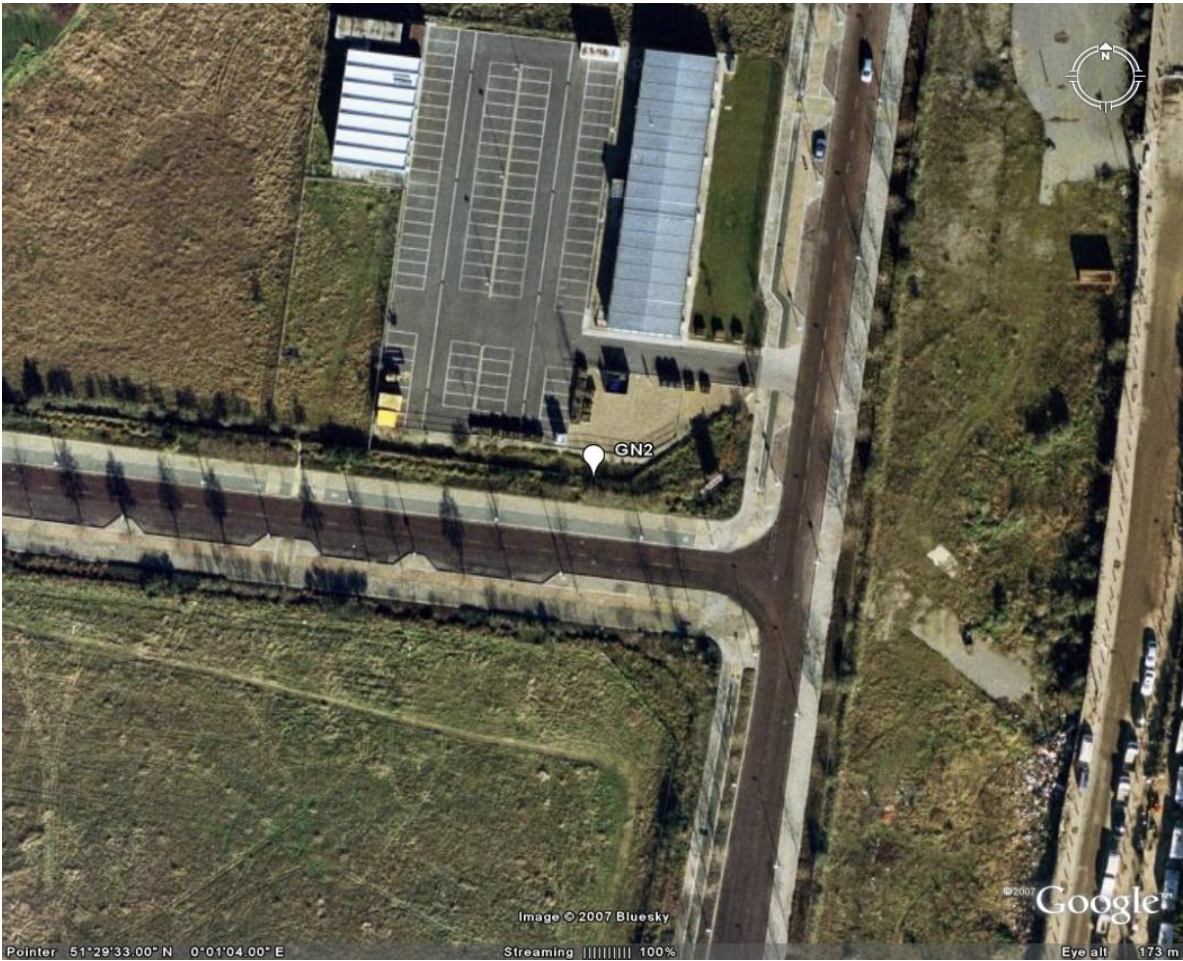


Site name	Site code	Date of visit	OS X	OS Y	Latitude	Longitude	UTM
Greenwich 12	GN2	14/08/2007	540175	179000	51 29' 33N	0 01' 04E	31U 291566.88E, 5686686.97N

Satellite pictures

Date:
12/05/2006 -
10/09/2006

Local scale
(100 m radius)



Meso Scale
(1km radius)



WIVICH
INSULA
LOGY
RK

PEARTREE WAY
HORN LINK WAY
THAME

SIDE

© Collins Bartholomew Ltd 2007 100 Yards

This is a detailed street map of the Ponders End area in North London. The map shows a network of roads, including major thoroughfares like Southbury Road, High Street, and Meridian Way. Key landmarks and features include:

- Landmarks and Buildings:** Ponders End Mill, Jubilee Park, Lee Valley Golf Course, Ponders End Mill, and various commercial buildings and houses.
- Public Facilities:** Jubilee Park, Lee Valley Golf Course, Ponders End Mill, and various sports grounds and pitches.
- Transportation:** The map shows the N9 road and the Lee Valley Golf Course, which is a major landmark.
- Geographical Features:** The Lee Valley is shown on the right side of the map, and the Lee Valley Golf Course is located near the bottom right.
- Other Features:** The map includes labels for various schools, sports grounds, and commercial areas, as well as a legend for different types of buildings and roads.

The map is oriented with North at the top. The Lee Valley is shown on the right side of the map, and the Lee Valley Golf Course is located near the bottom right. The map also shows various schools, sports grounds, and commercial areas, as well as a legend for different types of buildings and roads.

Site classification	LAQN Classification	Station Type
	Urban background	Urban Meteorological

Urban climate zone	Meso (1 km radius)	Local (100 m radius)	Micro (30 m radius)
	4	4	4

% Land cover		100 m	1 km
	Vegetated	64	15.75
	Built over	27.27	49.23
	Water	0	21.11
	Road	8.73	13.91

Main Land use	Direction	Land use (MAJOR/minor)
	N	RIVER/ green space
	E	INDUSTRIAL/ river
	S	INDUSTRIAL/ residential
	W	INDUSTRIAL/ green space

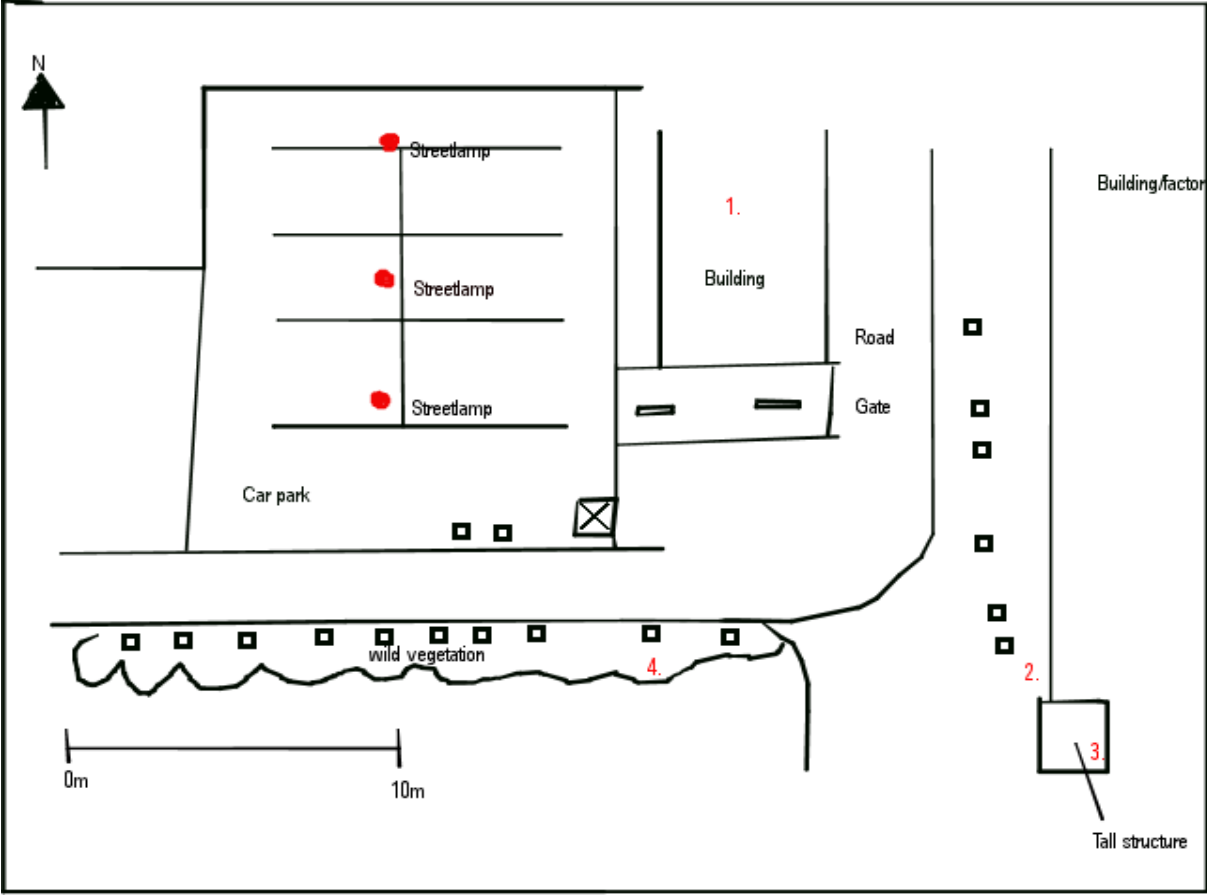
Site description	Meso (1 km radius)	Local (100 m radius)	Micro (30 m radius)
	River close to the North. Major roads to the South.	Surrounded by open fields and large industrial areas.	A very representative site. At the edge of a large paved area of car park.

Station photo



Plan view
diagram
(30 m radius)

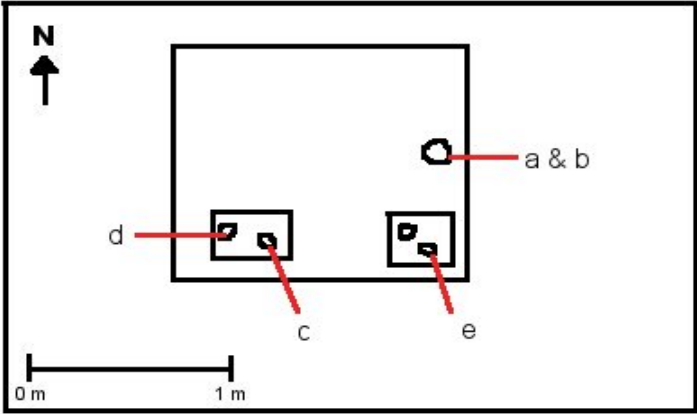
KEY
□ : Tree
X : Station



Site obstacles

Sketch key	Type	Detail	Wall material	Roof material	View from station
1	Building	N/a	Blue panel	Grey panel	 14/08/2007 11:09
2	Tree	N/a	N/a	N/a	 14/08/2007 11:16
3	Building	N/a	N/a	N/a	 14/08/2007 11:11
4	Tree	N/a	N/a	N/a	 14/08/2007 11:11

Instrument
diagram
(Plan view)



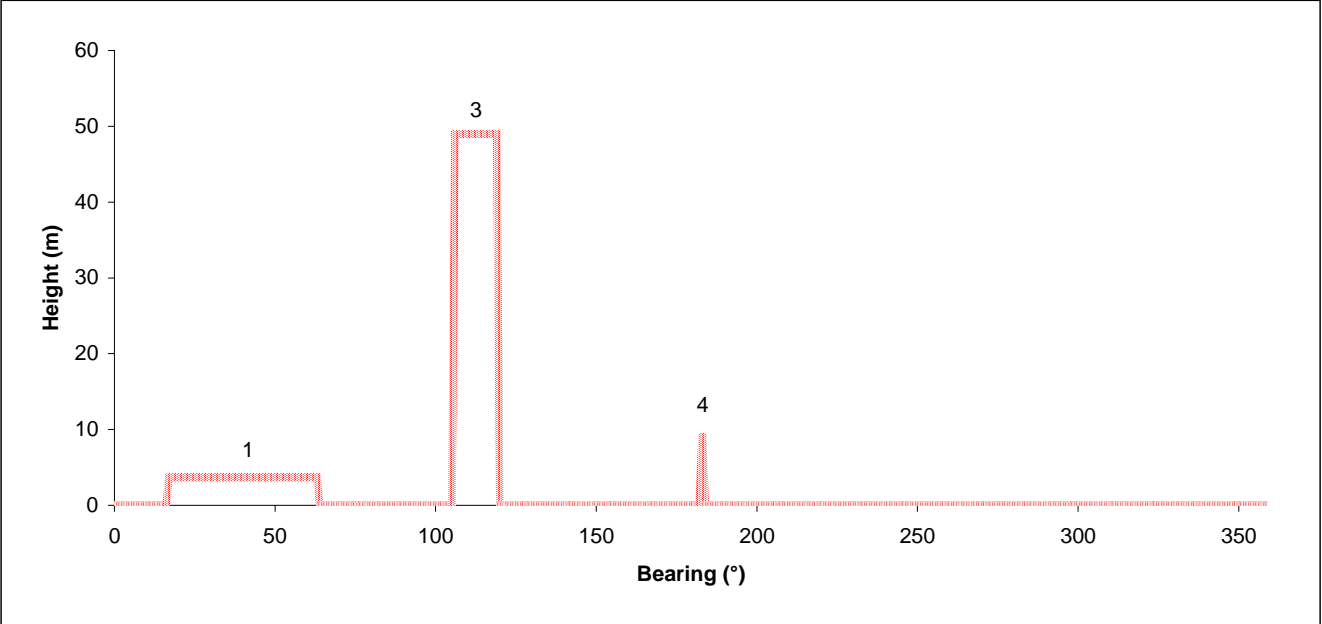
Instruments

Sketch key	Name	Variable	True height (m)	Concerns
a	Young's wind vane	Wind direction	7.81	N/a
b	Young's wind vane	Wind speed	7.81	N/a
c	RH gauge	Relative humidity	2.7	N/a
d	TEOM	Air temperature	2.52	N/a
e	Sample inlet	Air quality	2.9	N/a

Instrument
image



Graphs
 Height vs.
 bearing



Other
 influences

Heat sources	Bearing from site (°)	Source	Location	Detail
	N/a	N/a	N/a	N/a

Traffic	Quiet local roads surrounding busy A206.	Seasonal features	N/a	Temporary fixtures	Surrounding building works which are fairly constant.

Task	Initial
Who visited the site	RW, KR, MP
Who filed the report	RE
Who produced the plots	RE

*N.B. values
 given to 3
 s.f.*