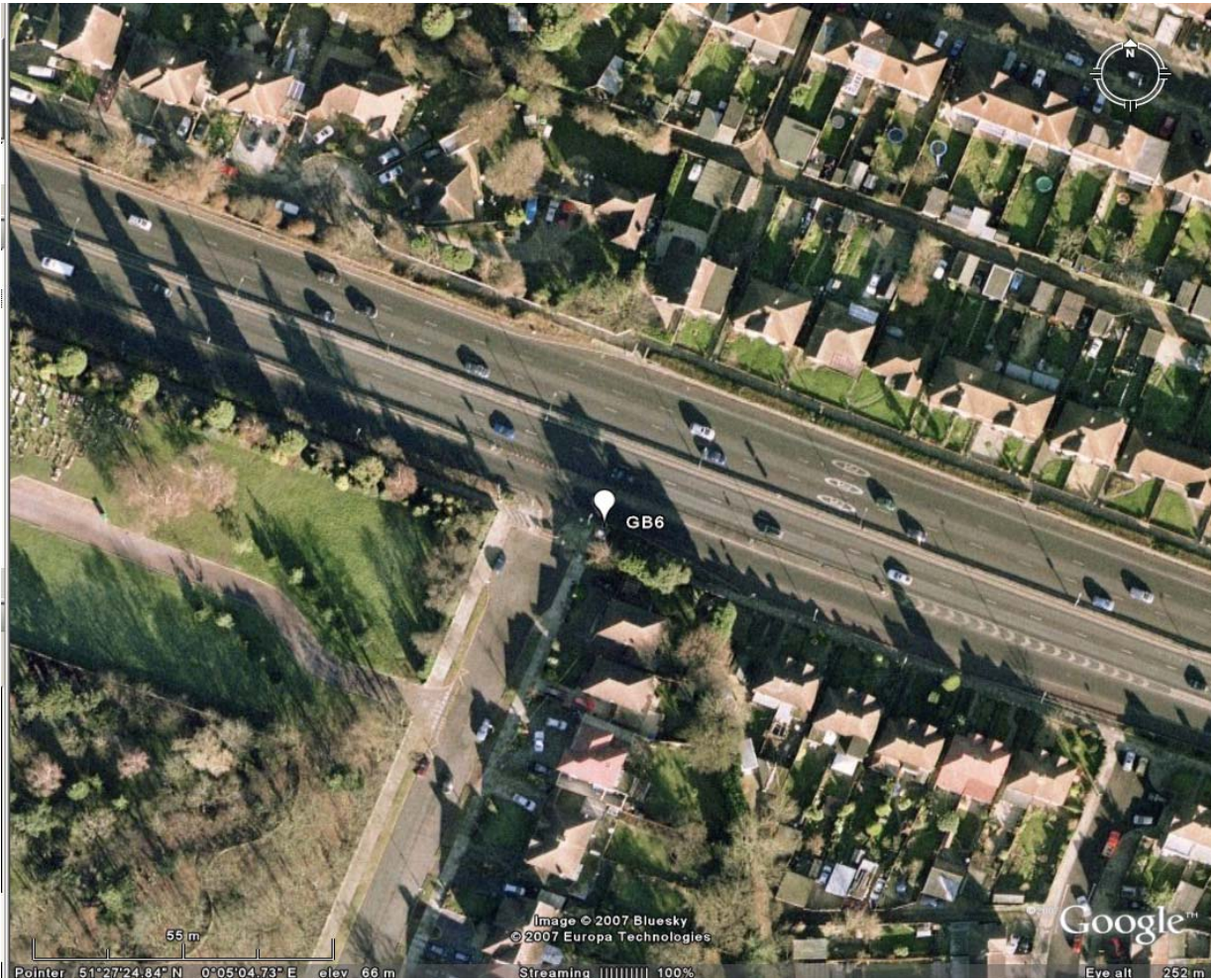


Site name	Site code	Date of visit	OS X	OS Y	Latitude	Longitude	UTM
Greenwich Bexley 6	GB6	31/07/2007	544980	175080	51 27' 22N	0 05' 08E	31U 294281.73E, 5684227.42N

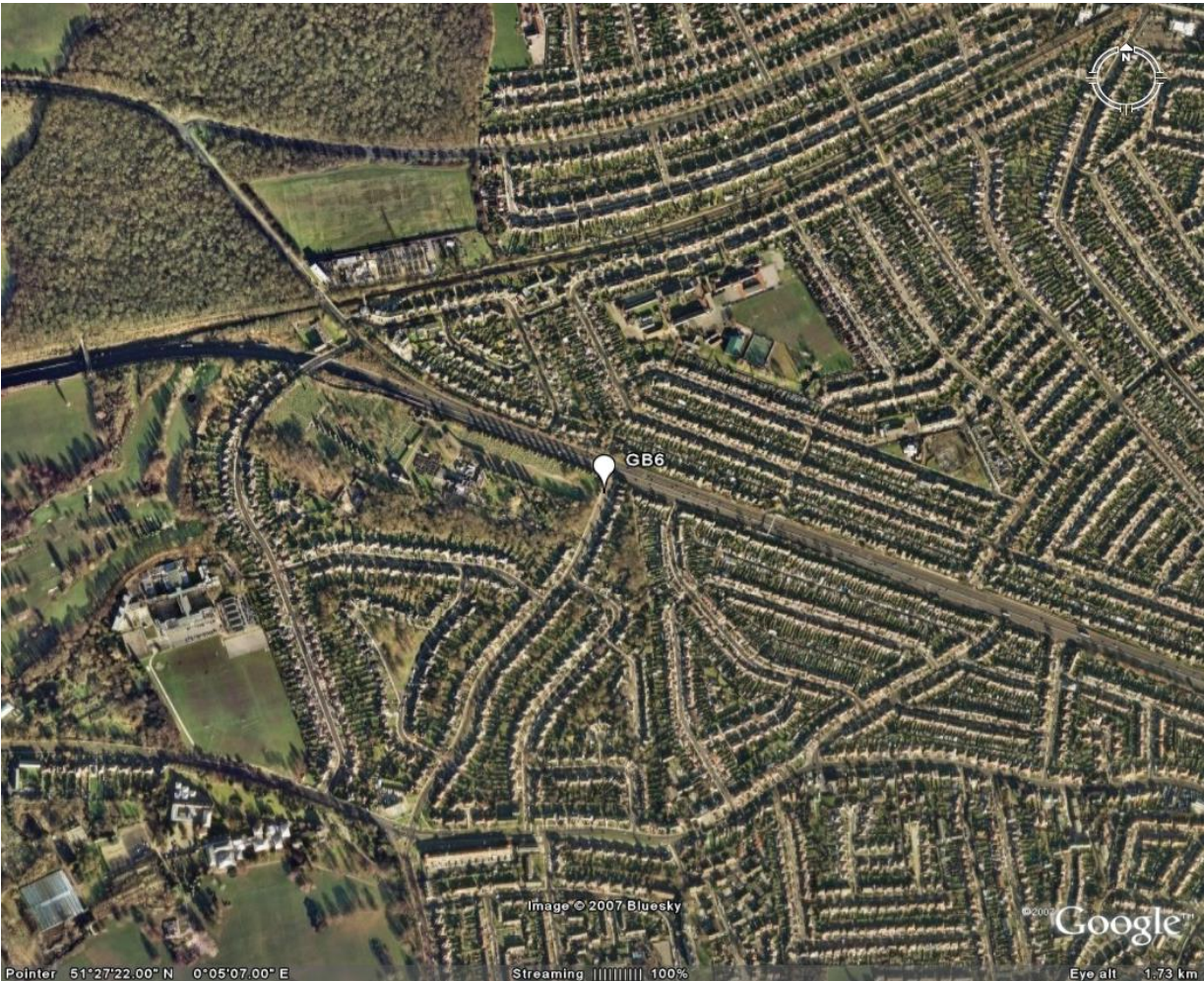
Satellite pictures

Date:  
18/09/2006 -  
06/10/2006

Local scale  
(100 m radius)

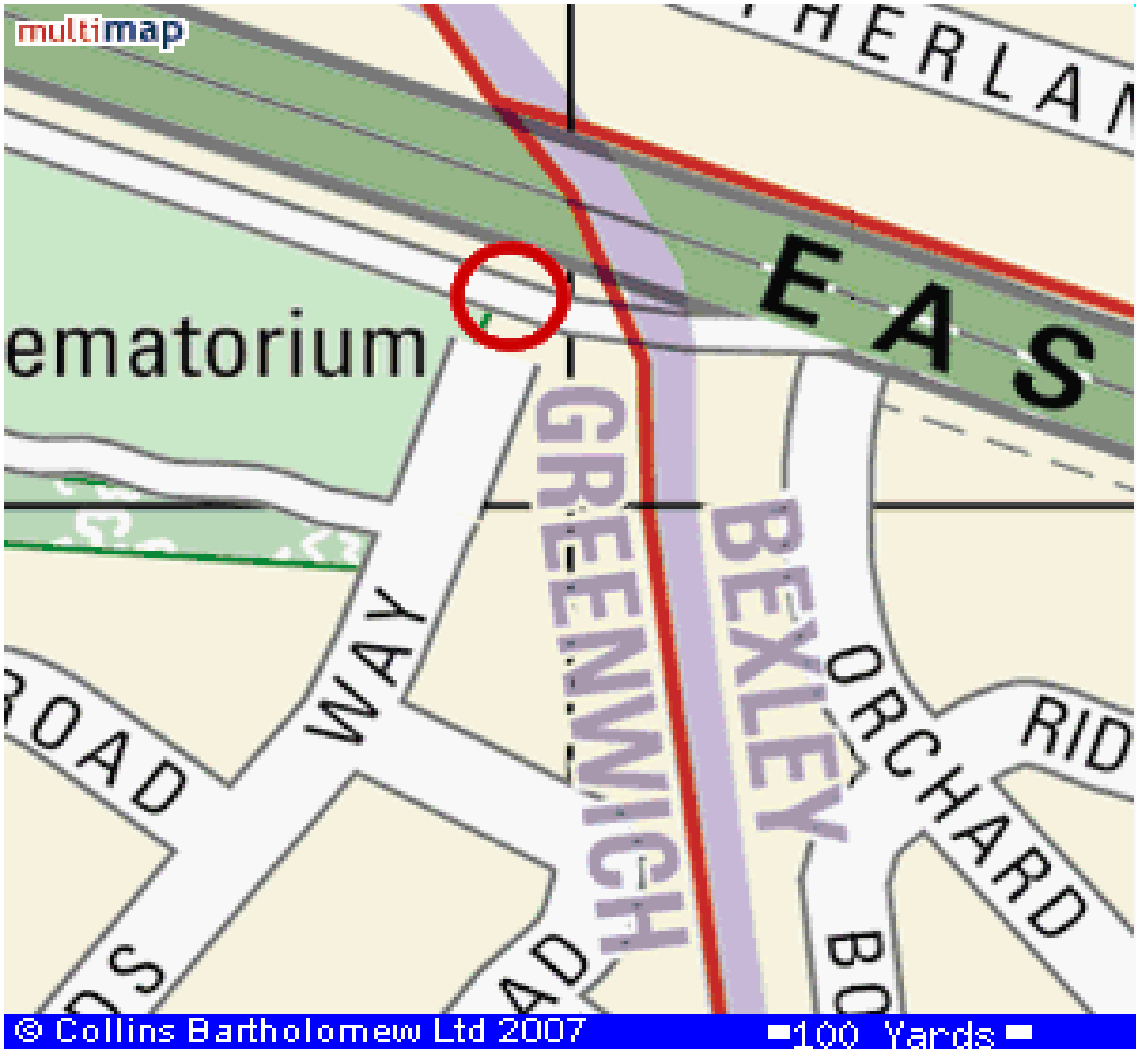


Meso Scale  
(1km radius)





Street maps



Meso Scale  
(1km radius)



Site classification	LAQN Classification	Station Type	Urban climate zone	Meso (1 km radius)	Local (100m radius)	Micro (30 m radius)
	Roadside	Urban Meteorological		5	5	5

% Land cover		100 m	1 km	Land use	Direction	Land use (MAJOR / minor)
	Vegetated	55.7	58.3		N	RESIDENTIAL/ Forest
	Built over	17.2	28.7		E	RESIDENTIAL/ Park
	Water	0	0		S	RESIDENTIAL
	Road	27	12.9		W	CREMATORIUM/ Park

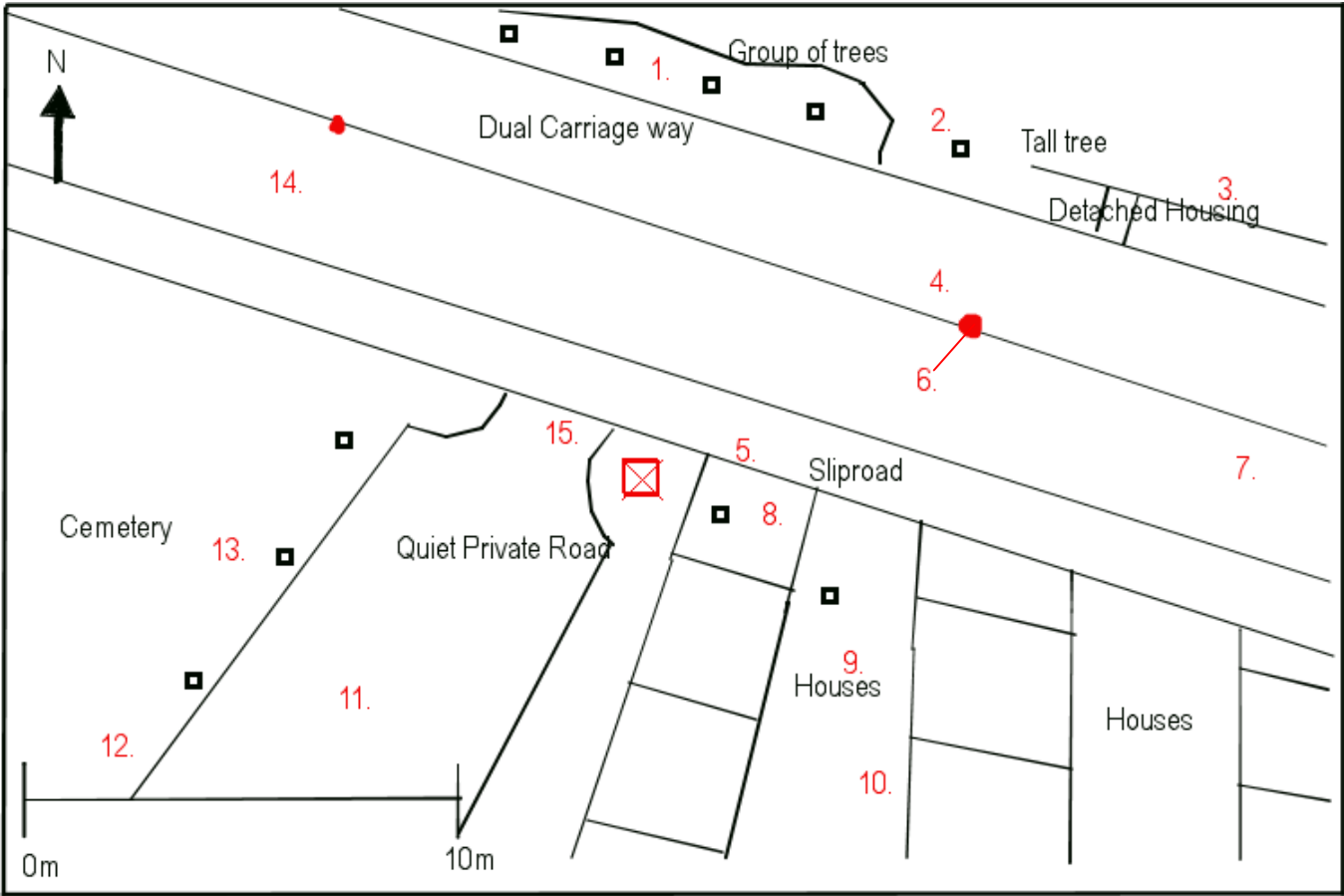
Site description	Meso (1 km radius)	Local (100m radius)	Micro (30 m radius)
	Suburban housing, lots of open greenspace and trees to Northwest and Southwest of site in particular.	Suburban housing, lots of greenspace and trees.	Station elevated above road level by 0.24m. Neighbouring A-road and slip road very busy; road to the South of site very quiet.

Station photo








Plan view  
diagram  
(30 m radius)

**KEY**  
□ : Tree  
X : Station



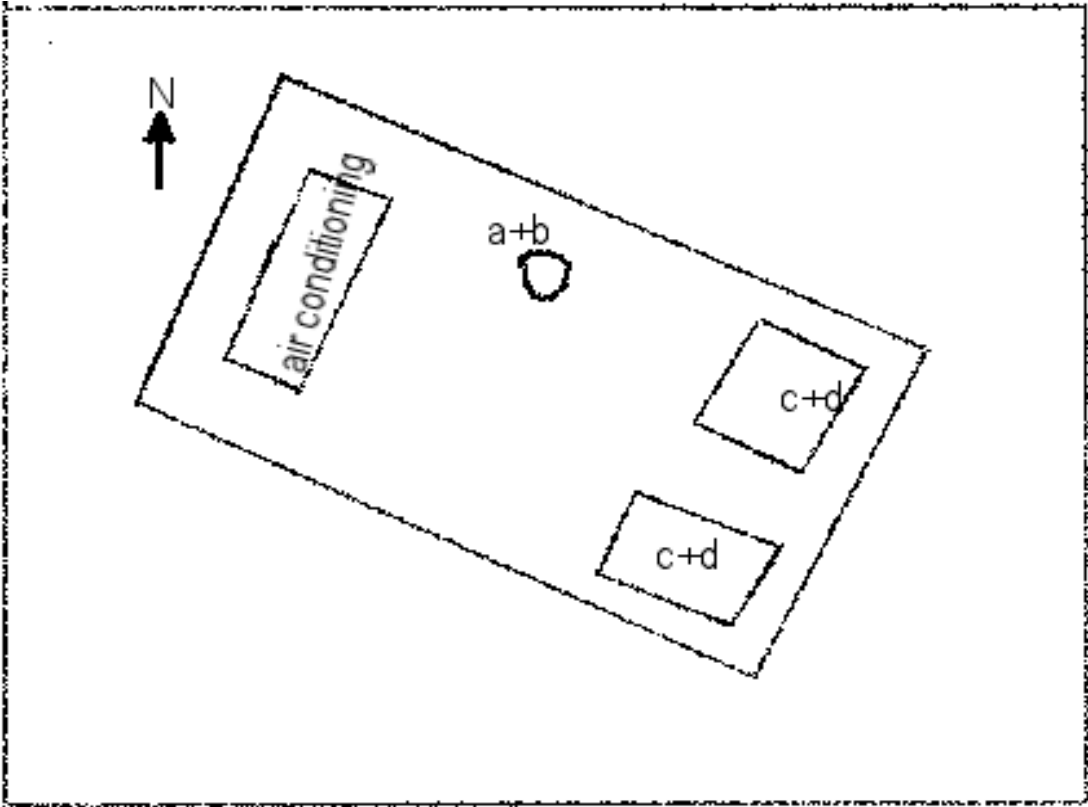
Site obstacles

Sketch key	Type	Detail	Wall material	View from station
1	Group of trees	and Evergreen	N/a	
2	Tree	Deciduous	N/a	
3	Housing	Detached	Dark pebbledash/ white painted brick	
4	Road	A-road, dual carriageway	Black tarmac	
5	Road	Slip road	Tarmac	
6	Street light	N/a	N/a	
7	Street light	N/a	N/a	
8	Tree	Deciduous	N/a	
9	Tree	Deciduous	N/a	

10	Housing	Semi-detached	Brown brick & red slate / painted white	
11	Road	Residents' road	Black tarmac	
12	Tree	Deciduous	N/a	
13	Group of trees	Majority deciduous; a few evergreen	N/a	 
14	Street light	N/a	N/a	
15	Street light	N/a	N/a	



Instrument  
diagram  
(Plan view)



Instruments

Sketch key	Name	Variable	True height (m)	Concerns
a	Wind sonic	Wind speed	7.74	Neighbouring trees (8) & (9) are tall and affect local wind movement (strength and direction)
b	Wind sonic	Wind direction	7.74	Neighbouring trees (8) & (9) are tall and affect local wind movement (strength and direction)
c	TEOM	Air quality	3.18	N/a
d	Temperature sensor	Air temperature	2.78	Not directly beneath but near a tall streetlight (15)

Instrument  
images



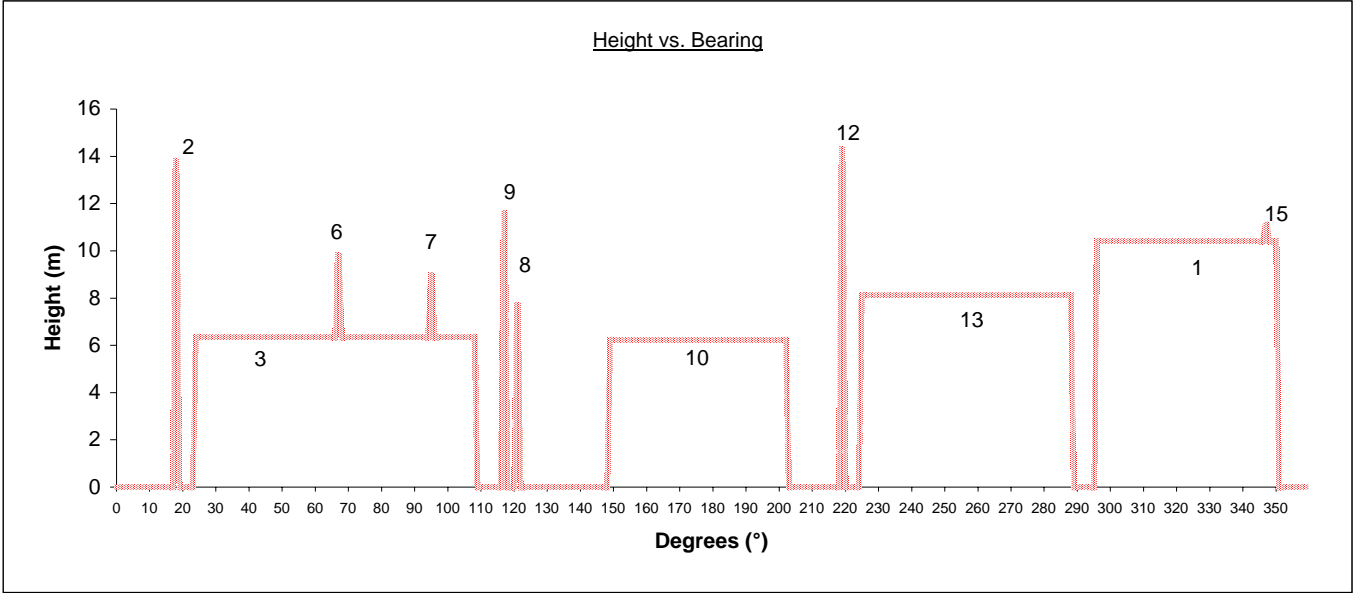
Image 1:  
Teom (Air  
quality)



Image 2:  
Windsonic  
(Wind Speed  
and  
Direction)

Graphs

Height vs. bearing



Other influences

Heat sources	Bearing from site (°)	Source	Location	Detail
	On roof of station	Air conditioning unit	Northfacing side of cabin	N/a
	347	Street light (15)	To west of cabin	Tall; may affect temperature readings at night
	149 - 202	Housing	Southeast of cabin	N/a
	Northeast to West of cabin	Busy road	Immediately in front of Northfacing side of cabin	Dual carriageway; busy in both directions

Traffic

Heavy traffic on A-road and slip road (4) & (5)	Seasonal features	Summer; trees in full leaf	Temporary fixtures	N/a
---	-------------------	----------------------------	--------------------	-----

Task	Initial
Who visited the site	RW, KR.
Who filed the report	KR.
Who produced the plots	KR

N.B.  
values  
given to 3  
s.f.